

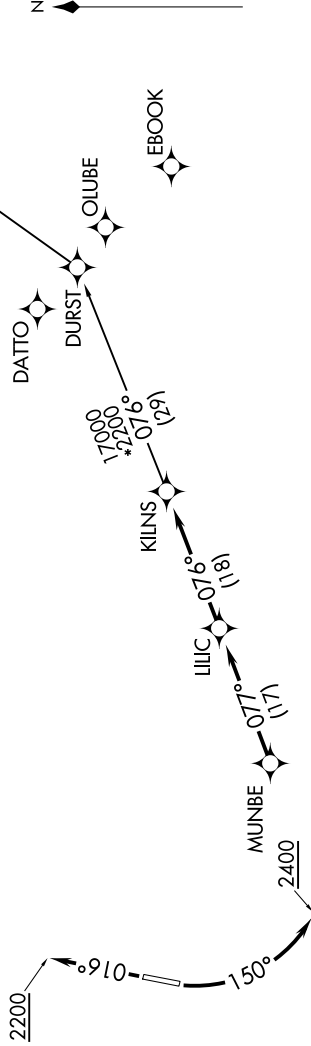
# KILNS FOUR DEPARTURE (RNAV)

SE-2, 22 APR 2021 to 20 MAY 2021

ATIS ★  
 133.675  
 CLNC DEL  
 118.55  
 CLNC DEL (when twr closed)  
 127.25  
 GND CON  
 121.85  
 CONCORD TOWER ★  
 134.65 (CTAF)  
 UNICOM  
 122.95  
 CHARLOTTE DEP CON  
 128.325 307.8

- NOTE: For turbojets only.
- NOTE: DME/DME/IRU or GPS required.
- NOTE: RNAV 1.
- NOTE: RADAR required.
- NOTE: Transponder code will be issued via PDC or Charlotte CLNC DEL.
- NOTE: Upon reaching 10000 MSL, accelerate to and maintain 280K, if unable advise ATC.
- NOTE: If unable to accept climb rates, advise ATC on initial contact.

**TOP ALTITUDE:  
3000**



NOTE: Chart not to scale.

## DEPARTURE ROUTE DESCRIPTION

- TAKEOFF RWY 2:** Climb heading 016° to 2200, thence, . . .
- TAKEOFF RWY 20:** Climbing left turn heading 150° to 2400, thence, . . .
- . . . on heading assigned by ATC, expect RADAR vectors to MUNBE, then on depicted route to KILNS, then on AUDII transition. Maintain 3000. Expect clearance to filed altitude within 10 minutes after departure.

AUDII TRANSITION (KILNS4.AUDII)

## TAKEOFF MINIMUMS

- Rwy 2: Standard.
- Rwy 20: Standard with minimum climb of 320' per NM to 2400.

# KILNS FOUR DEPARTURE (RNAV)

SE-2, 22 APR 2021 to 20 MAY 2021