

# KNIGHTS TWO DEPARTURE

**TOP ALTITUDE:  
3000**

ATIS ★  
133.675  
CLNC DEL  
118.55  
CLNC DEL (when twr closed)  
127.25  
GND CON  
121.85  
CONCORD TOWER ★  
134.65 (CTAF)  
UNICOM  
122.95  
CHARLOTTE DEP CON  
128.325 307.8

TAKEOFF MINIMUMS

Rwy 2: Standard.

Rwy 20: 300-1¼ or standard with minimum climb of 204' per NM to 1000.  
Or alternatively, with standard takeoff minimums and a normal 200' per NM climb gradient, takeoff must occur no later than 1200' prior to DER.

NOTE: For propeller aircraft only.

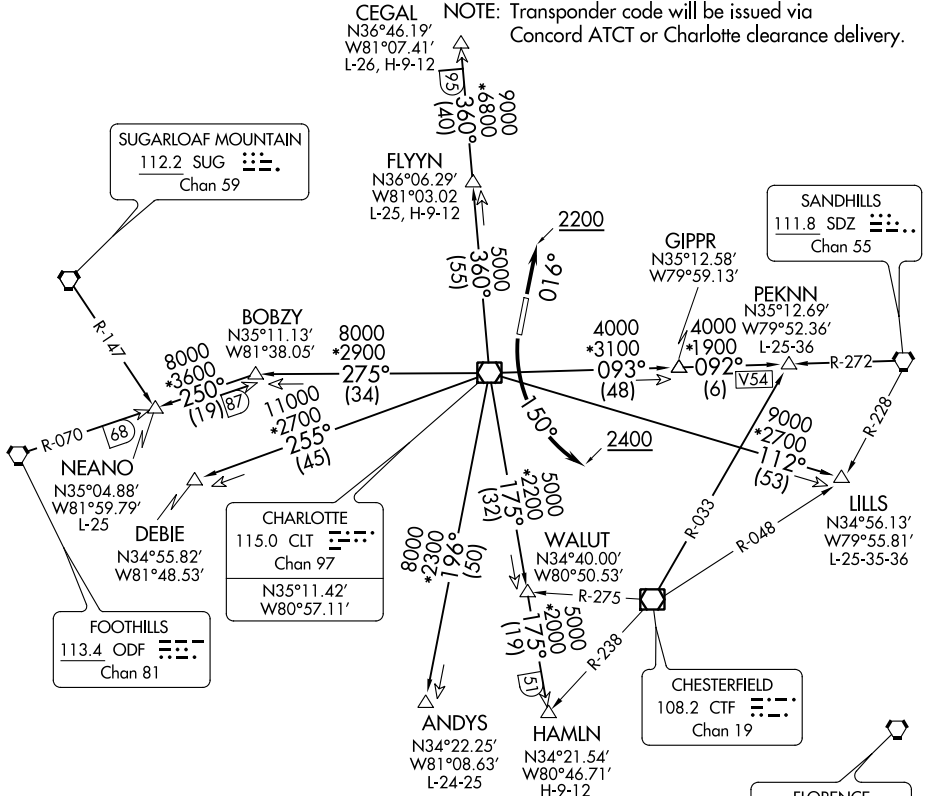
NOTE: RADAR and DME required.

NOTE: Turboprops: Operate in a manner that will result in best forward speed and climb rate.

NOTE: Transponder code will be issued via Concord ATCT or Charlotte clearance delivery.

SE-2, 22 APR 2021 to 20 MAY 2021

SE-2, 22 APR 2021 to 20 MAY 2021



- ANDYS TRANSITION: Expect vectors to intercept CLT R-196 to ANDYS.
- CEGAL TRANSITION: Expect vectors to intercept CLT R-360 to CEGAL.
- DEBIE TRANSITION: Expect vectors to intercept CLT R-255 to DEBIE.
- FLYYN TRANSITION: Expect vectors to intercept CLT R-360 to FLYYN.
- HAMLN TRANSITION: Expect vectors to intercept CLT R-175 to HAMLN.
- LILLS TRANSITION: Expect vectors to intercept CLT R-112 to LILLS.
- NEANO TRANSITION: Expect vectors to intercept CLT R-275 to BOBZY then ODF R-070 to NEANO.
- PEKNN TRANSITION: Expect vectors to intercept CLT R-093 to GIPPR then SDZ R-272 to PEKNN.

(NARRATIVE ON FOLLOWING PAGE)

NOTE: Chart not to scale.

# KNIGHTS TWO DEPARTURE