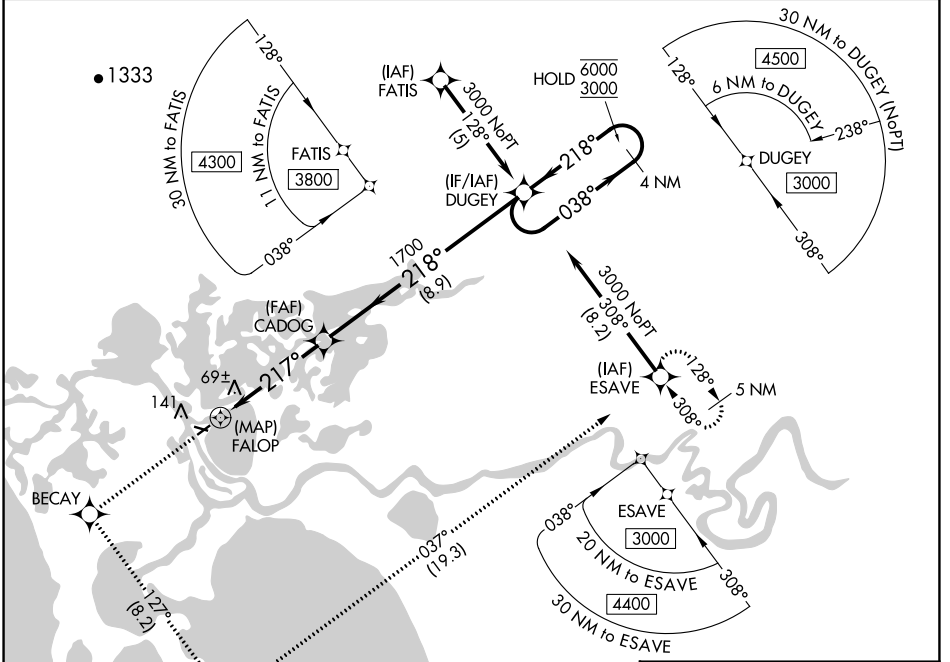


APP CRS	Rwy Idg	3002
217°	TDZE	17
	Apt Elev	17

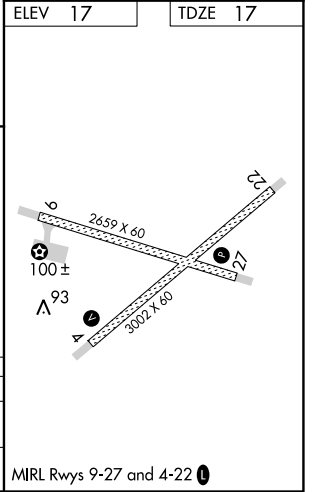
RNAV (GPS) Y RWY 22

SELAWIK (WLK) (PASK)

RNP APCH.		MISSED APPROACH: Climb to 3000 direct BECAY and left turn on track 127° to APACU and left turn on track 037° to ESAVE and hold.	
-36°C Circling Rwy 9, 27 NA at night.			
AWOS-3P	ANCHORAGE CENTER	KOTZEBUE RADIO	CTAF
135.65	119.2 263.0	122.5	122.7



3000	BECAY	APACU	ESAVE	DUGEY
	tr 127°	tr 037°		4 NM Holding Pattern
CADOG FALOP $\leq 3.05^\circ$ TCH 45 217° 1700 218° 6000 / 3000 038° 218°				
0.5 4.6 NM 8.9 NM				
CATEGORY	A	B	C	D
LNAV MDA	320-1 303 (400-1)			
CIRCLING	480-1	463 (500-1)	480-1½ 463 (500-1½)	580-2 563 (600-2)



AK, 22 APR 2021 to 17 JUN 2021

AK, 22 APR 2021 to 17 JUN 2021