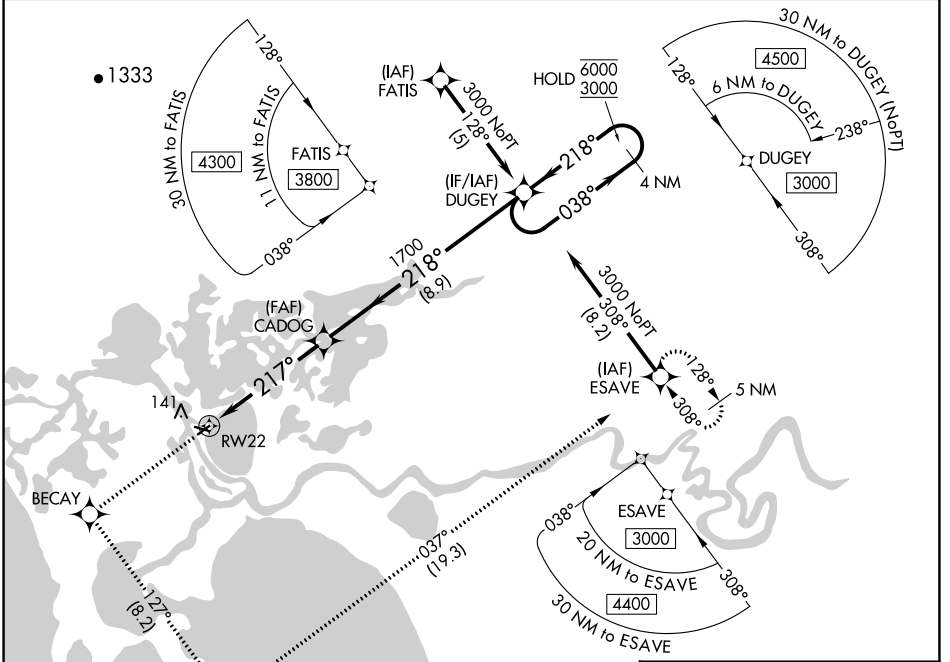


|  |                        |                             |                                       |
|--|------------------------|-----------------------------|---------------------------------------|
| WAAS<br>CH <b>40404</b><br><b>W22A</b> | APP CRS<br><b>217°</b> | Rwy Idg<br>TDZE<br>Apt Elev | <b>3002</b><br><b>17</b><br><b>17</b> |
|--|------------------------|-----------------------------|---------------------------------------|

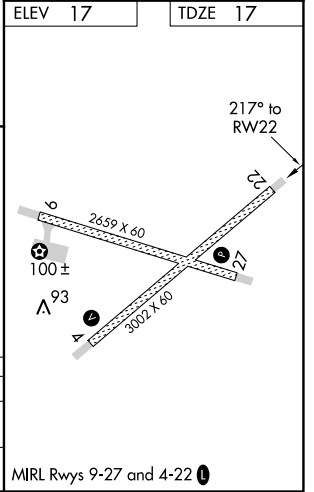
# RNAV (GPS) Z RWY 22

SELAWIK (WLK) (PASK)

|   |  |   |  |
|---|--|---|--|
| RNP APCH.   |  | MISSED APPROACH: Climb to 3000 direct BECAY and left turn on track 127° to APACU and left turn on track 037° to ESAVE and hold. |  |
| -36°C<br>For uncompensated Baro-VNAV systems, LNAV/VNAV NA below -25°C or above 49°C. |  | AWOS-3P<br><b>135.65</b>  | ANCHORAGE CENTER<br><b>119.2 263.0</b> |
|   |  | KOTZEBUE RADIO<br><b>122.5</b>  | CTAF<br><b>122.7</b>                   |



|  |  |        |              |   |
|--|--|--------|--------------|---|
| ELEV 17                                      | TDZE 17  |        |              |   |
| 3000 BECAY tr 127°<br>APACU tr 037°<br>ESAVE | DUGEY 4 NM Holding Pattern<br>6000 / 3000<br>GP 3.00° TCH 45 |        |              |   |
| CADOG 1700<br>RWY 22 1700<br>5.1 NM   8.9 NM |  |        |              |   |
| CATEGORY                                     | A  | B      | C            | D |
| LPV DA                                       |  | 267-1  | 250 (300-1)  |   |
| LNAV/VNAV DA                                 |  | 364-1¼ | 347 (400-1¼) |   |



AK, 22 APR 2021 to 17 JUN 2021

AK, 22 APR 2021 to 17 JUN 2021