

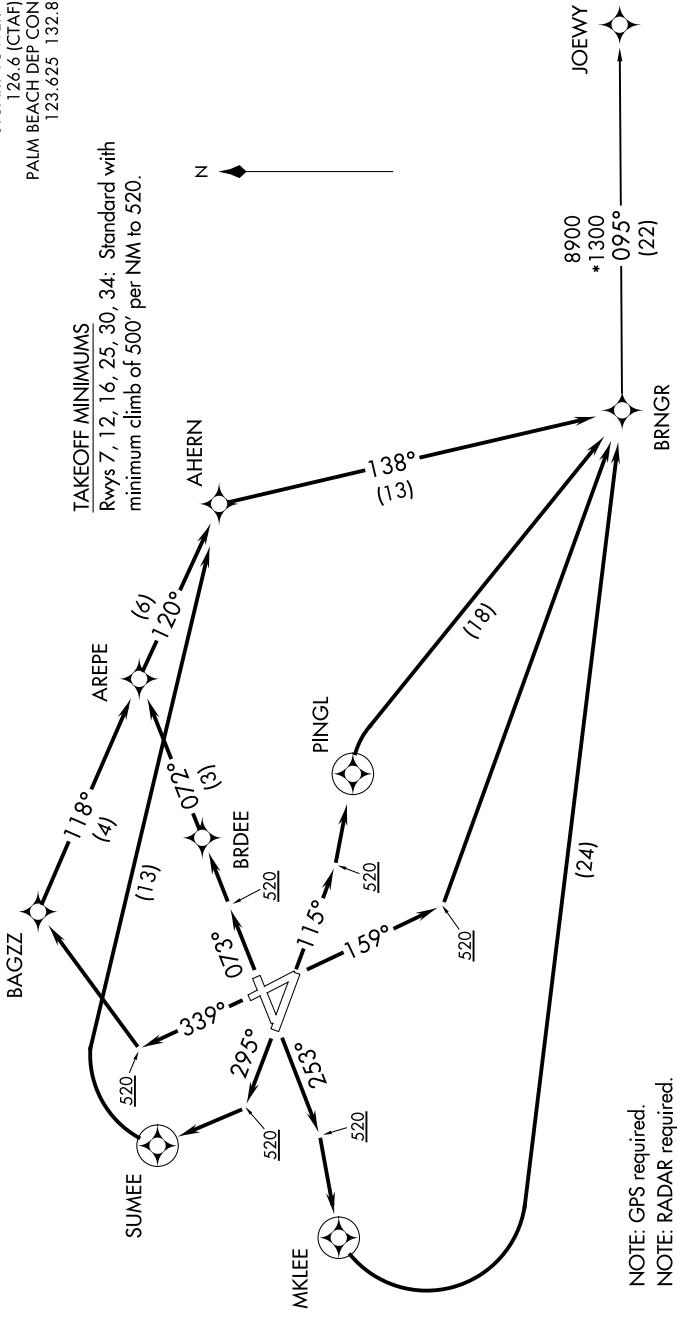
BRNGR TWO DEPARTURE (RNAV)

ATIS 134.475
 GND CON 121.7
 STUART TOWER* 126.6 (CTAF)
 PALM BEACH DEP CON 123.625 132.8

TAKEOFF MINIMUMS
 Rvys 7, 12, 16, 25, 30, 34: Standard with
 minimum climb of 500' per NM to 520.



TOP ALTITUDE:
3000



NOTE: GPS required.
 NOTE: RADAR required.
 NOTE: RNAV 1.
 NOTE: For turbojet/turboprop aircraft only.
 NOTE: Transponder code will be issued via SUA ground control or PBI APP CON when tower closed.

NOTE: Chart not to scale.

(NARRATIVE CONTINUED ON FOLLOWING PAGE)

BRNGR TWO DEPARTURE (RNAV)