

APP CRS	Rwy Idg	<b>3300</b>
<b>147°</b>	TDZE	<b>2</b>
	Apt Elev	<b>2</b>

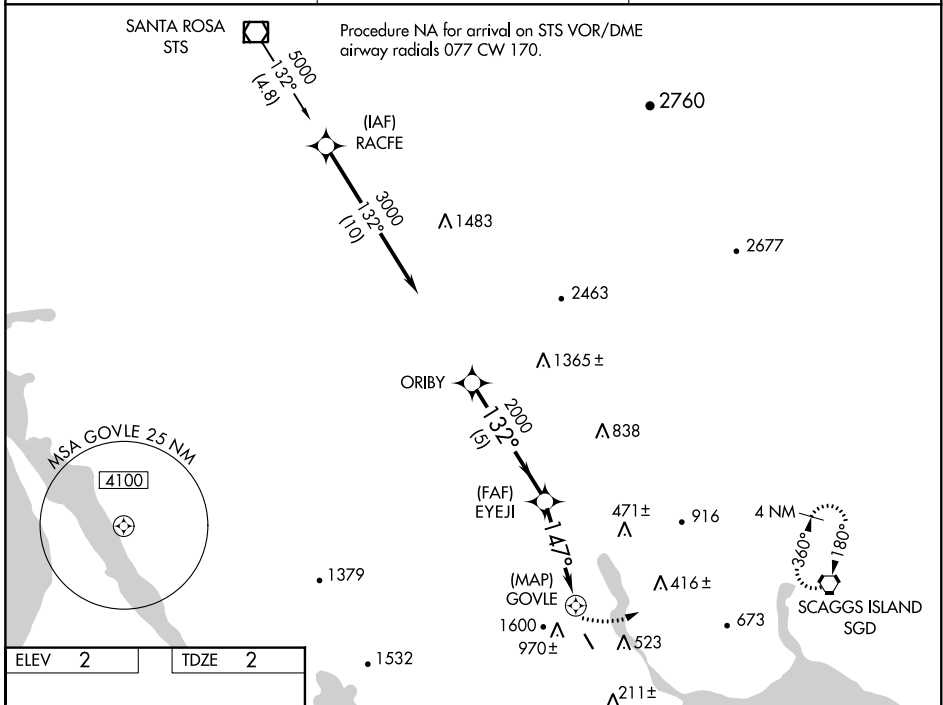
# GPS RWY 13

GROSS FIELD (DVO)

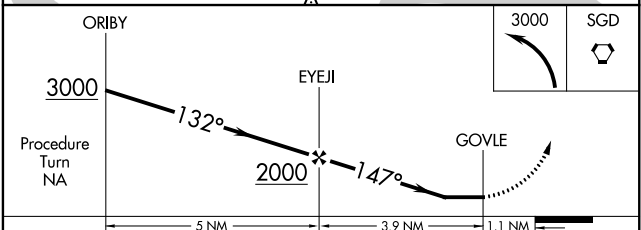
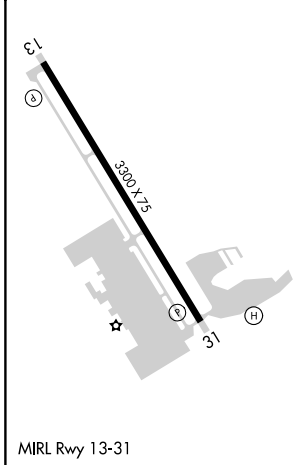
**NA** Circling NA west of Rwy 13-31. When local altimeter not received, use Napa altimeter setting and increase all MDAs 40 feet. If neither is received procedure is NA. Rwy 13 helicopter visibility reduction below 3/4 SM NA.

**MISSED APPROACH:** Climbing left turn to 3000 direct SGD VORTAC and hold.

<b>AWOS-3P</b> <b>120.675</b>	<b>OAKLAND CENTER</b> <b>127.8 353.5</b>	<b>UNICOM</b> <b>123.075 (CTAF)</b>
----------------------------------	---	--



ELEV 2	TDZE 2
--------	--------



CATEGORY	A	B	C	D
S-13	1000-1¼ 998 (1000-1¼)	1000-1½ 998 (1000-1½)		NA
CIRCLING	1000-1¼ 998 (1000-1¼)	1000-1½ 998 (1000-1½)		NA
NAPA ALTIMETER SETTING MINIMUMS				
S-13	1040-1¼ 1038 (1100-1¼)	1040-1½ 1038 (1100-1½)		NA
CIRCLING	1040-1¼ 1038 (1100-1¼)	1040-1½ 1038 (1100-1½)		NA

SW-2, 22 APR 2021 to 20 MAY 2021

SW-2, 22 APR 2021 to 20 MAY 2021