

WAAS CH <b>61108</b> W21A	APP CRS <b>212°</b>	Rwy Idg TDZE <b>217</b> Apt Elev <b>220</b>	<b>4000</b>
---------------------------------	------------------------	---	-------------

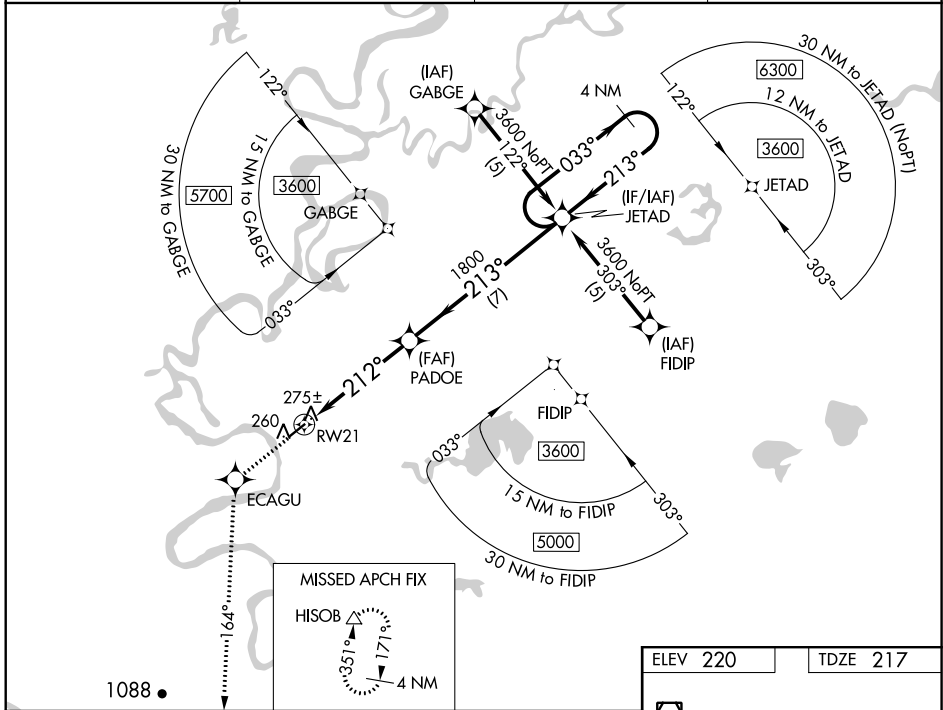
# RNAV (GPS) RWY 21

HUSLIA (HLA)(PAHL)

▼ For uncompensated Baro-VNAV systems, LNAV/VNAV NA below -25°C (-13°F) or above 48°C (118°F). Helicopter visibility reduction below ¾ SM NA. DME/DME RNP-0.3 NA.

MISSED APPROACH: Climb to 3000 direct ECAGU and via 164° track to HISOBB and hold.

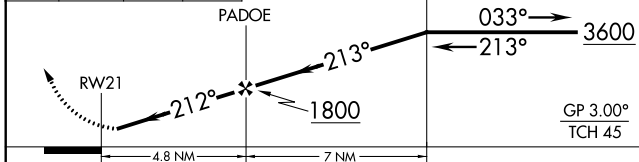
AWOS-3P <b>135.75</b>	ANCHORAGE CENTER <b>127.0 290.2</b>	FAIRBANKS RADIO <b>122.4</b>	UNICOM <b>122.8 (CTAF)</b>
--------------------------	--	---------------------------------	-------------------------------



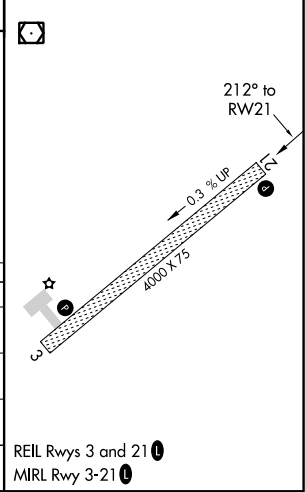
AK, 22 APR 2021 to 17 JUN 2021

AK, 22 APR 2021 to 17 JUN 2021

3000	ECAGU	HISOBB	VGSI and RNAV glidepath not coincident (VGSI Angle 3.00/TCH 25).
↑	✦	△	
	tr 164°		



ELEV 220	TDZE 217
----------	----------



CATEGORY	A	B	C	D
LPV DA		517-1	300 (300-1)	
LNAV/VNAV DA		549-1¼	332 (400-1¼)	
LNAV MDA		540-1	323 (400-1)	
CIRCLING	600-1 380 (400-1)	680-1 460 (500-1)	680-1½ 460 (500-1½)	780-2 560 (600-2)