

APP CRS	Rwy Idg	N/A
047°	TDZE	N/A
	Apt Elev	730

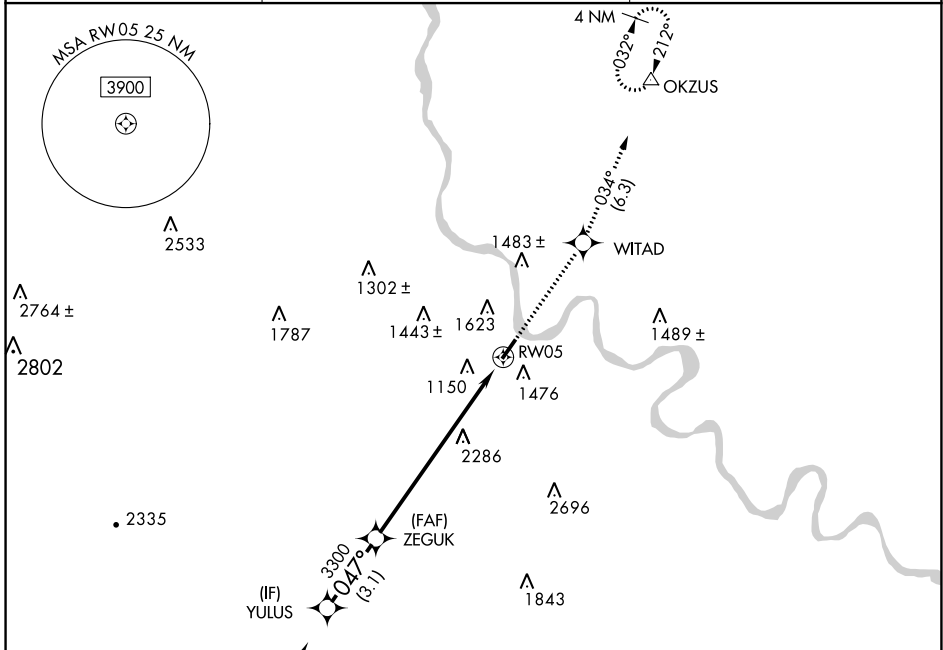
# RNAV (GPS)-A

BRADFORD COUNTY (N27)

**NA** DME/DME RNP-0.3 NA. Visibility reduction by helicopters NA. When local altimeter setting not received, use Elmira altimeter setting and increase all MDAs 40 feet. Procedure NA at night.

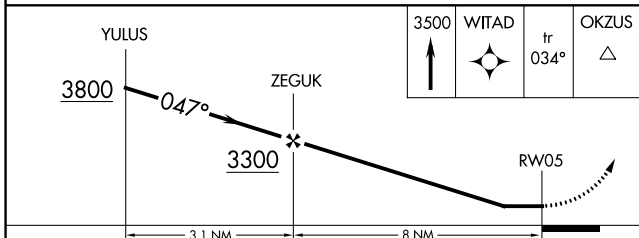
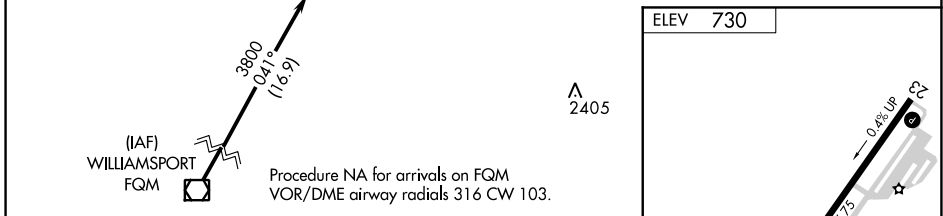
**MISSED APPROACH:** Climb to 3500 direct WITAD and on track 034° to OKZUS and hold.

AWOS-3 <b>119.925</b>	BINGHAMTON APP CON <b>118.6 257.625</b>	UNICOM <b>123.0 (CTAF)</b> <b>0</b>
--------------------------	--	--



NE-4, 22 APR 2021 to 20 MAY 2021

NE-4, 22 APR 2021 to 20 MAY 2021



CATEGORY	A	B	C	D
<b>CIRCLING</b>	2760-1¼ 2030 (2100-1¼)	2760-1½ 2030 (2100-1½)	NA	

MIRL Rwy 5-23 **0**  
REIL Rwys 5 and 23 **0**