

APP CRS 327°	Rwy Idg TDZE Apt Elev	N/A N/A 44
------------------------	-----------------------------	---------------------------------------

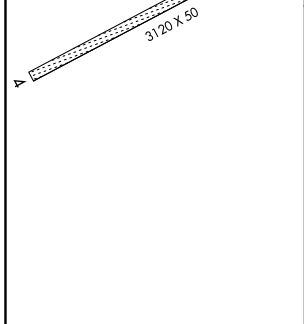
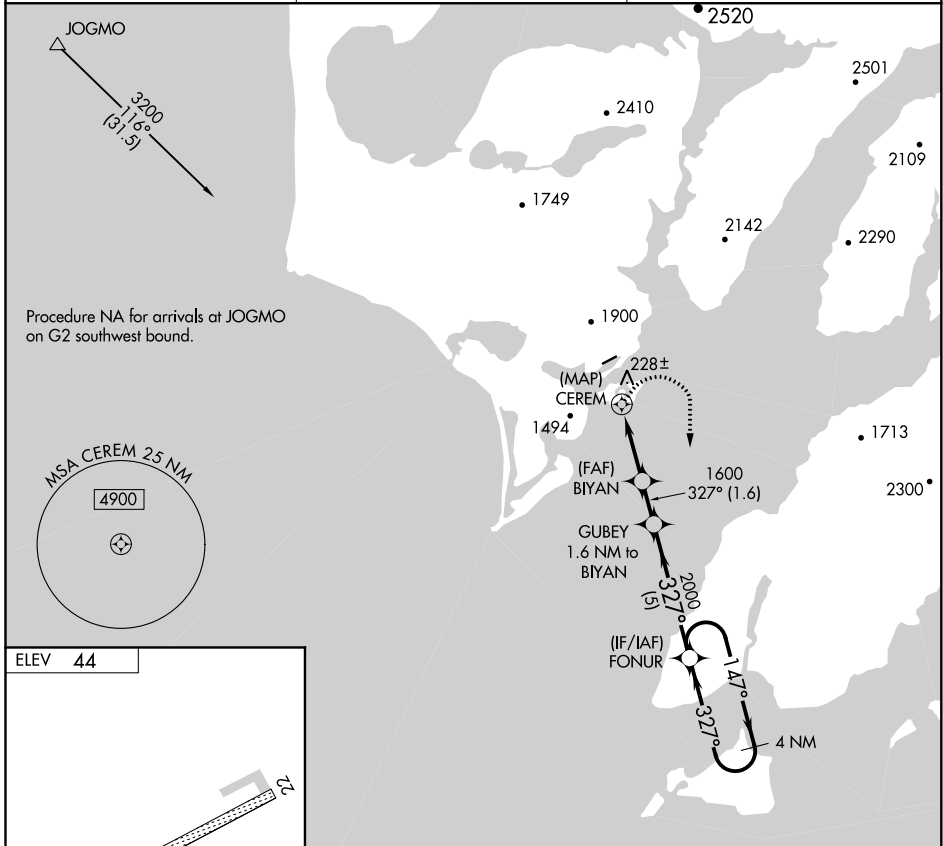
RNAV (GPS)-A

AKHIOK (AKK) (PAKH)

⚠ DME/DME RNP-0.3 NA. Procedure NA at night. Circling NA northwest of Rwy 4/22. If local altimeter setting not received, use Kodiak altimeter setting and increase all MDAs 800 feet.

⚠ MISSED APPROACH: Climbing right turn to 3200 direct FONUR WP and hold.

AWOS-3P 118.325	ANCHORAGE CENTER 125.1 281.4	UNICOM 122.8 (CTAF)
---------------------------	--	-------------------------------



3200	FONUR	4 NM Holding Pattern		
CEREM	BIYAN	GUBEY 1.6 NM to BIYAN		
1600	2000	327°		
1.6	2.9 NM	1.6 NM		
5 NM				
CATEGORY	A	B	C	D
CIRCLING	580-2	536 (600-2)	NA	

AK, 22 APR 2021 to 17 JUN 2021

AK, 22 APR 2021 to 17 JUN 2021