

WAAS CH 45721 W23A	APP CRS 233°	Rwy Idg TDZE 210 Apt Elev 215	5494
--	------------------------	---	-------------

RNAV (GPS) RWY 23

EARLY COUNTY (BIJ)

⚠ Inop table does not apply to LPV, LNAV/VNAV and LNAV Cat A/B. For uncompensated Baro-VNAV systems, LNAV/VNAV NA below -15°C (5°F) or above 42°C (107°F).
⚠ Rwy 5, 23 helicopter visibility reduction below 1 SM NA. DME/DME RNP-0.3 NA.
 When local altimeter setting not received, use Bainbridge altimeter setting: increase LPV DA to 578 feet, LNAV/VNAV DA to 587 feet; increase all MDAs 80 feet and visibility LNAV Cat C and D 1/2 SM. For inop ALS, increase LNAV Cat C/D visibility to 1 1/8 SM. Baro-VNAV and VDP NA when using Bainbridge altimeter setting.

MALSF

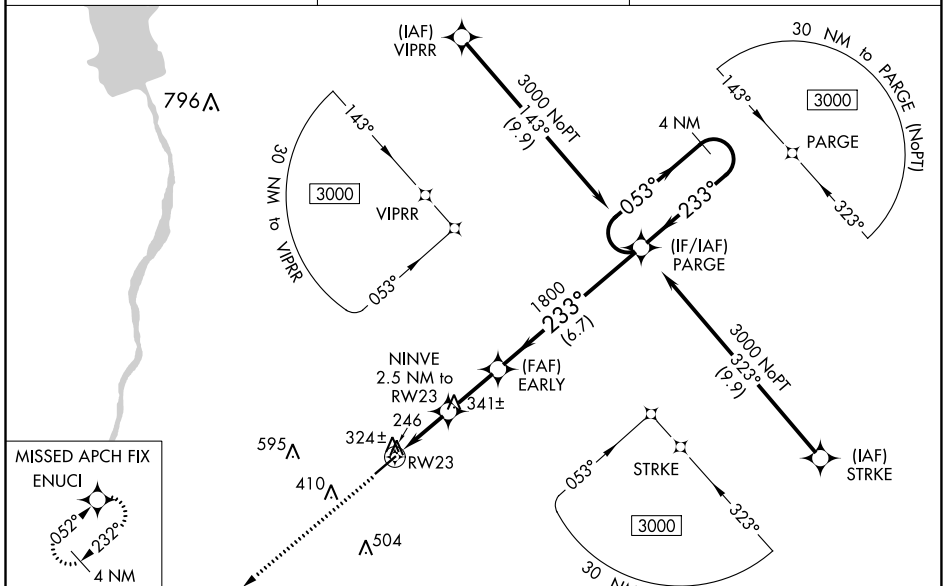


MISSED APPROACH:
Climb to 2000 direct ENUCI and hold.

AWOS-3PT
118.475

CAIRNS APP CON ★
125.4 327.125

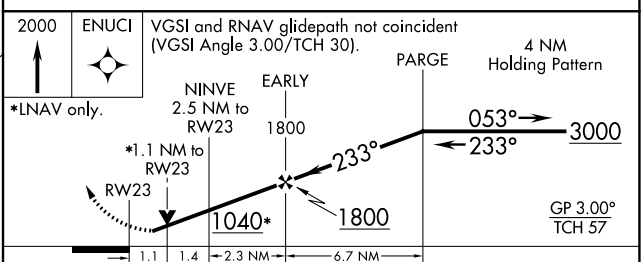
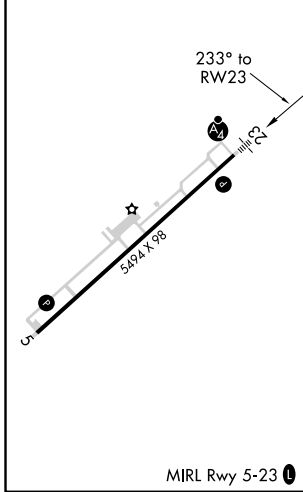
CTAF
122.9



SE-4, 22 APR 2021 to 20 MAY 2021

SE-4, 22 APR 2021 to 20 MAY 2021

ELEV 215	TDZE 210
----------	----------



CATEGORY	A	B	C	D
LPV DA		501-1	291 (300-1)	
LNAV/VNAV DA		510-1	300 (300-1)	
LNAV MDA		600-1	390 (400-1)	
CIRCLING	720-1	505 (600-1)	720-1 1/2 505 (600-1 1/2)	780-2 565 (600-2)