

WAAS CH 61121 W05A	APP CRS 053°	Rwy Idg TDZE 215 Apt Elev 215	5494
--	------------------------	---	-------------

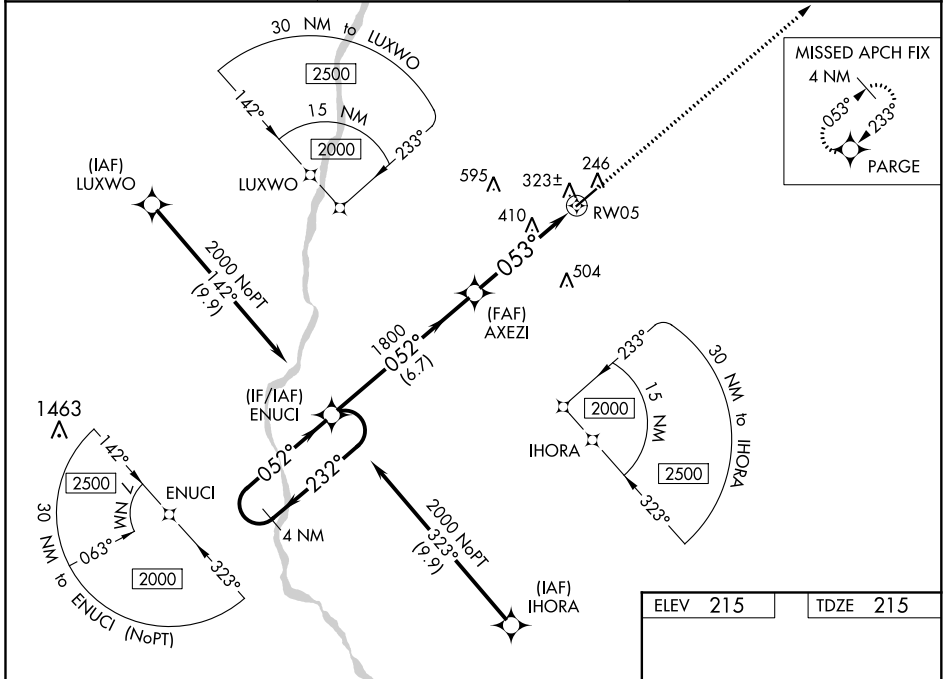
RNAV (GPS) RWY 5

EARLY COUNTY (BIJ)

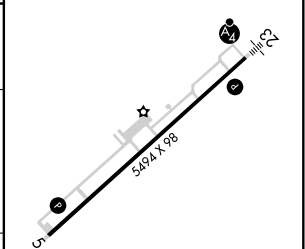
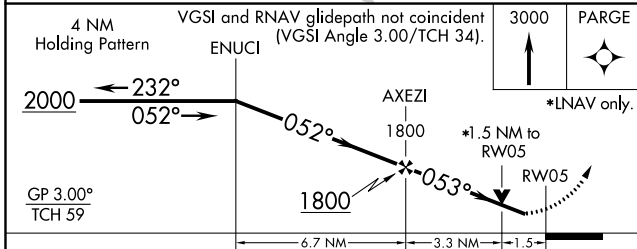
⚠ For uncompensated Baro-VNAV systems, LNAV/VNAV NA below -15°C (5°F) or above 42°C (107°F). Rwy 5, 23 helicopter visibility reduction below 1 SM NA. DME/DME RNP-0.3 NA.
⚠ Baro-VNAV and VDP NA when using Bainbridge altimeter setting. When local altimeter setting not received, use Bainbridge altimeter setting; increase LPV DA to 605 feet, LNAV/VNAV DA to 582 feet and all visibilities ¼ SM; increase all MDAs 80 feet and visibility LNAV Cat C/D and Circling Cat C ¼ SM.

MISSED APPROACH:
Climb to 3000 direct PARGE and hold.

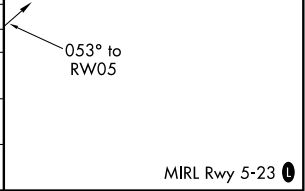
AWOS-3PT 118.475	CAIRNS APP CON ★ 125.4 327.125	CTAF 122.9 0
----------------------------	--	-------------------------------



ELEV 215	TDZE 215
----------	----------



CATEGORY	A	B	C	D
LPV DA		528-1	313 (400-1)	
LNAV/VNAV DA		505-1	290 (300-1)	
LNAV MDA	740-1	525 (600-1)	740-1½	525 (600-1½)
CIRCLING	740-1	525 (600-1)	740-1½	780-2 565 (600-2)



SE-4, 22 APR 2021 to 20 MAY 2021

SE-4, 22 APR 2021 to 20 MAY 2021