

WAAS CH 93833 W35A	APP CRS 353°	Rwy Idg TDZE Apt Elev	3200 20 20
--	------------------------	-----------------------------	---------------------------------------

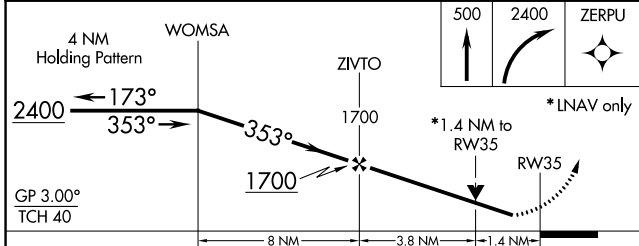
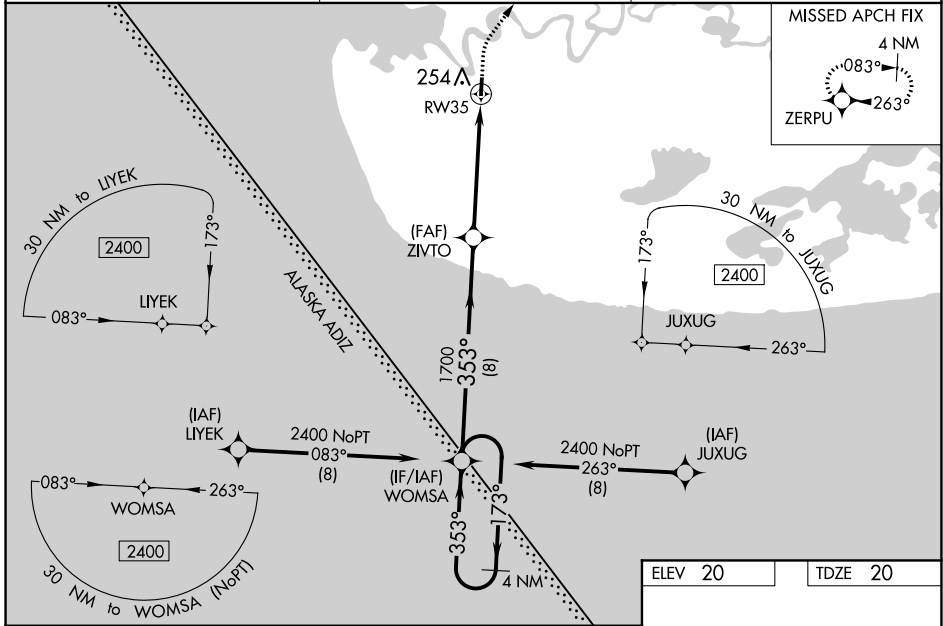
RNAV (GPS) RWY 35

KIPNUK (IIK) (PAKI)

⚠ Baro-VNAV NA when using Toksook Bay altimeter setting. For uncompensated Baro-VNAV systems, LNAV/VNAV NA below -20°C (-4°F) or above 54°C (130°F). Helicopter visibility reduction below ¾ SM NA. DME/DME RNP-0.3 NA. Procedure NA at night. VDP NA when using Toksook Bay altimeter setting. When local altimeter setting is not received use Toksook Bay altimeter setting: increase LPV DA to 389 feet and visibility all Cats ¼ SM. Increase LNAV/VNAV DA to 465 and visibility all Cats ⅓ SM. Increase all MDA 120 feet. Increase LNAV Cat C and D visibility to 1 ½ SM, Circling Cat C to 2 SM, Cat D to 2 ¼ SM.

MISSED APPROACH: Climb to 500 then climbing right turn to 2400 direct ZERPU and hold.

AWOS-3P 118.325	ANCHORAGE CENTER 125.2 372.0	CTAF 122.7
---------------------------	--	----------------------



ELEV 20	TDZE 20	
500	2400	ZERPU
*LNAV only		
*1.4 NM to RW35		
RW35		
3200 X 40		
35		
353° to RW35		
MIRL Rwy 17-35		

CATEGORY	A	B	C	D
LPV DA	270-1 250 (300-1)			
LNAV/VNAV DA	346-1 ⅛ 326 (400-1 ⅛)			
LNAV MDA	520-1	500 (500-1)	520-1 ⅜	500 (500-1 ⅜)
C CIRCLING	580-1	560 (600-1)	580-1 ½	580-2
			560 (600-1 ½)	560 (600-2)

AK, 22 APR 2021 to 17 JUN 2021

AK, 22 APR 2021 to 17 JUN 2021