

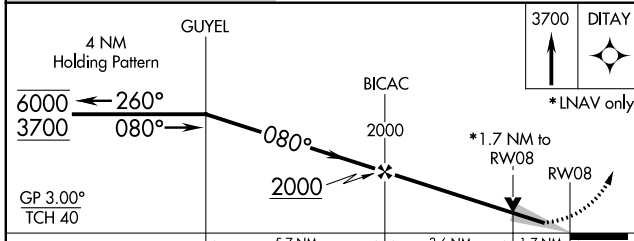
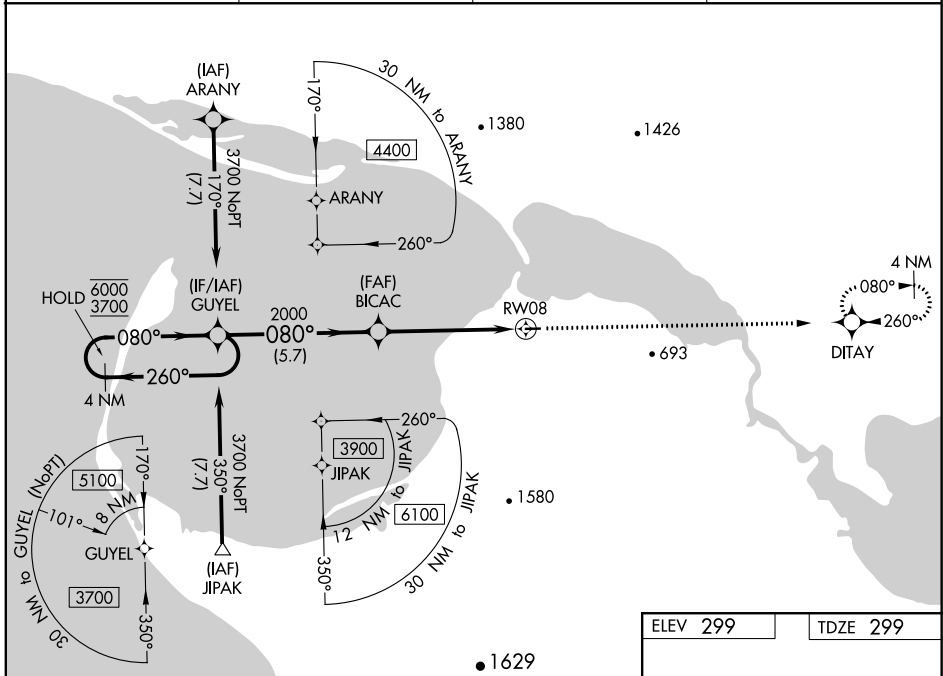
WAAS CH 78143 W08A	APP CRS 080°	Rwy Idg TDZE Apt Elev	2983 299 299
--	------------------------	-----------------------------	---

RNAV (GPS) RWY 8

TELLER (TER) (PATE)

RNP APCH.	MISSED APPROACH: Climb to 3700 direct DITAY and hold, continue climb-in-hold to 3700.
<p>▼ Circling NA south of Rwy 8-26. For uncompensated Baro-VNAV systems, LNAV/VNAV NA below -23°C or above 54°C.</p> <p>⚠ -36°C</p>	

AWOS-3P 118.375	ANCHORAGE CENTER 133.3 290.4	NOME RADIO 135.6	CTAF 123.0
---------------------------	--	----------------------------	----------------------



ELEV 299	TDZE 299
<p>080° to RWY 8</p>	
<p>MIRL Rwy 8-26</p>	

CATEGORY	A	B	C	D
LPV DA	499-1	200 (200-1)		NA
LNAV/VNAV DA	655-1	356 (400-1)		NA
LNAV MDA	860-1	561 (600-1)	860-1 $\frac{5}{8}$ 561 (600-1 $\frac{5}{8}$)	NA
CIRCLING	860-1 561 (600-1)	900-1 601 (700-1)	1060-2 $\frac{1}{4}$ 761 (800-2 $\frac{1}{4}$)	NA

AK, 22 APR 2021 to 17 JUN 2021

AK, 22 APR 2021 to 17 JUN 2021