

WAAS CH <b>70528</b> <b>W09A</b>	APP CRS <b>094°</b>	Rwy ldg <b>5002</b> TDZE <b>357</b> Apt Elev <b>359</b>
--	------------------------	---

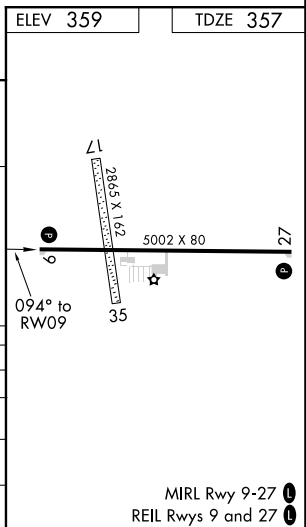
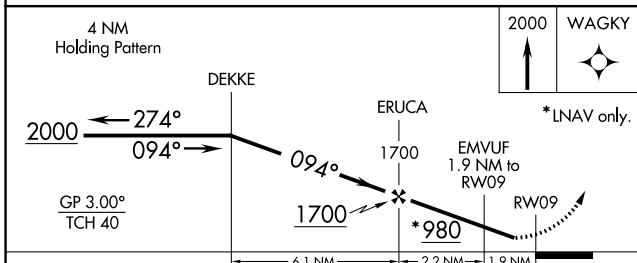
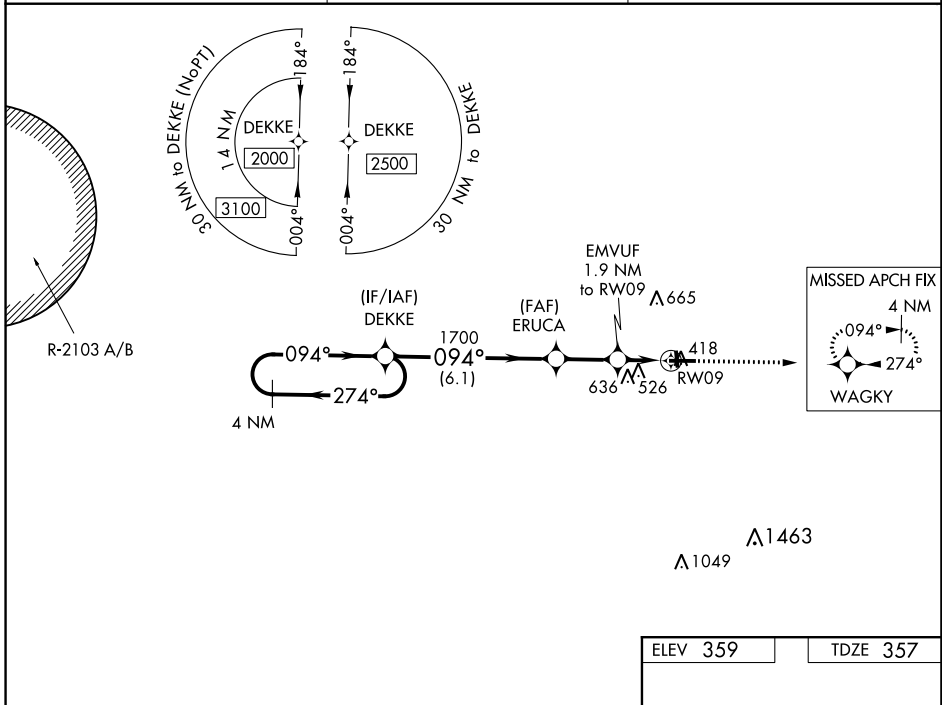
# RNAV (GPS) RWY 9

HEADLAND MUNI (ØJ6)

**⚠** DME/DME RNP-0.3 NA. Helicopter visibility reduction below ¾ SM not authorized. Use Dothan altimeter setting; when not received use Fort Rucker/Ozark altimeter setting and increase all DA 33 ft, all MDA 40 ft and increase LPV and LNAV/VNAV all Cats visibility ½ mile. Night landing: Rwy 17, 27, and 35 NA. Baro-VNAV NA.

**⚠** NA MISSED APPROACH: Climb to 2000 direct WAGKY and hold.

DHN ASOS <b>135.725</b>	CAIRNS APP CON ★ <b>125.4</b>	CTAF <b>122.90</b>
----------------------------	----------------------------------	-----------------------



CATEGORY	A	B	C	D
LPV DA	631-7/8	274 (300-7/8)		NA
LNAV/VNAV DA	810-1 1/2	453 (500-1 1/2)		NA
LNAV MDA	800-1	443 (500-1)	800-1 3/8 443 (500-1 3/8)	NA
CIRCLING	860-1	501 (600-1)	880-1 1/2 521 (600-1 1/2)	NA

SE-4, 22 APR 2021 to 20 MAY 2021

SE-4, 22 APR 2021 to 20 MAY 2021