

WAAS CH <b>82213</b> <b>W18A</b>	APP CRS <b>183°</b>	Rwy ldg <b>3200</b> TDZE <b>61</b> Apt Elev <b>80</b>
--	------------------------	---

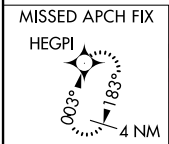
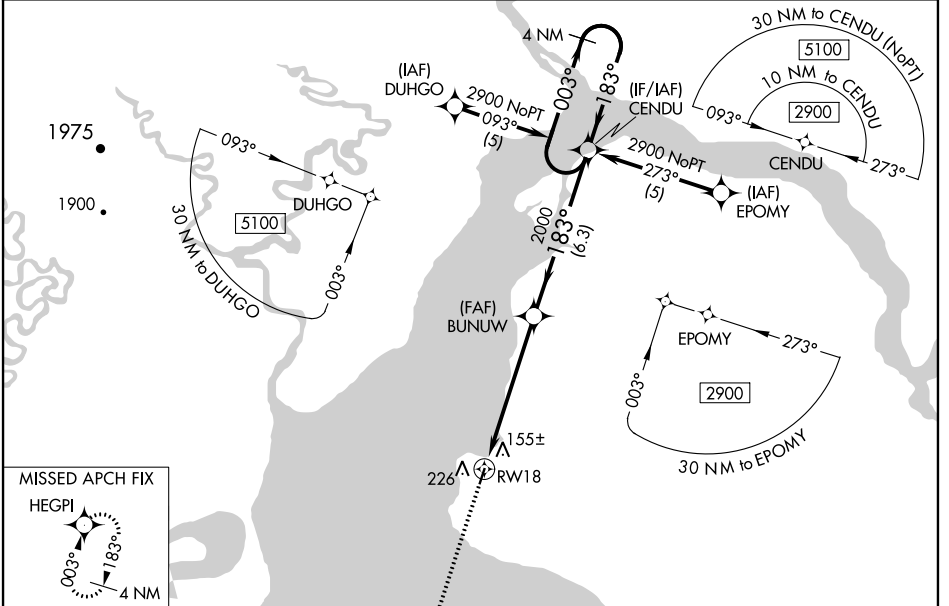
# RNAV (GPS) RWY 18

CLARKS POINT (CLP) (PFCL)

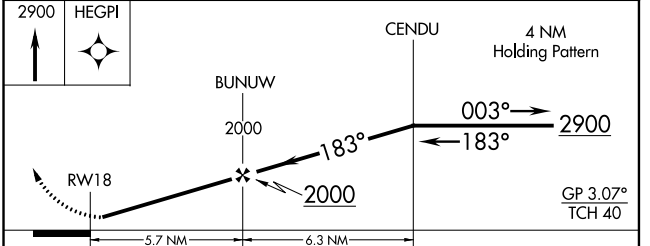
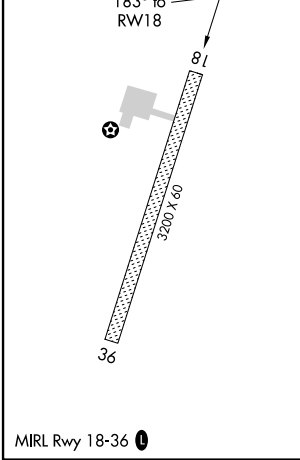
**NA** Baro-VNAV NA. DME/DME RNP-0.3 NA. Procedure NA at night.  
When local altimeter setting not received, use Dillingham altimeter setting.  
Rwy 18 helicopter visibility reduction below 1 SM NA.

MISSED APPROACH: Climb to 2900 direct HEGPI and hold.

AWOS-3P <b>135.55</b>	DLG/PADL AWOS-3P <b>125.0</b>	ANCHORAGE CENTER <b>132.75 282.35</b>	CTAF <b>122.9</b>
--------------------------	----------------------------------	--	----------------------



ELEV 80	TDZE 61
---------	---------



CATEGORY	A	B	C	D
LPV DA	355-1 294 (300-1)			
LNAV/VNAV DA	464-1½ 403 (400-1½)			
LNAV MDA	620-1	559 (600-1)	620-1½ 559 (600-1½)	620-1¾ 559 (600-1¾)
CIRCLING	620-1	540 (600-1)	620-1½ 540 (600-1½)	640-2 560 (600-2)

AK, 22 APR 2021 to 17 JUN 2021

AK, 22 APR 2021 to 17 JUN 2021