

APP CRS	Rwy Idg	<b>3200</b>
<b>003°</b>	TDZE	<b>80</b>
	Apt Elev	<b>80</b>

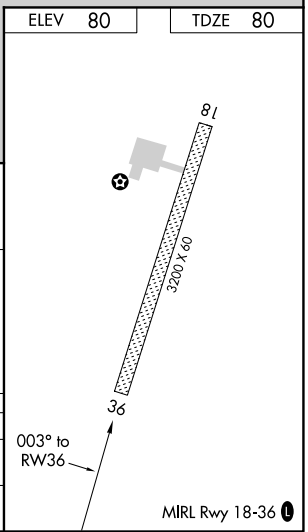
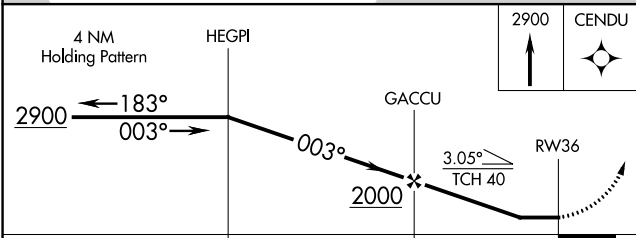
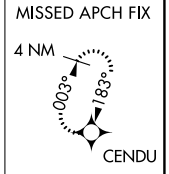
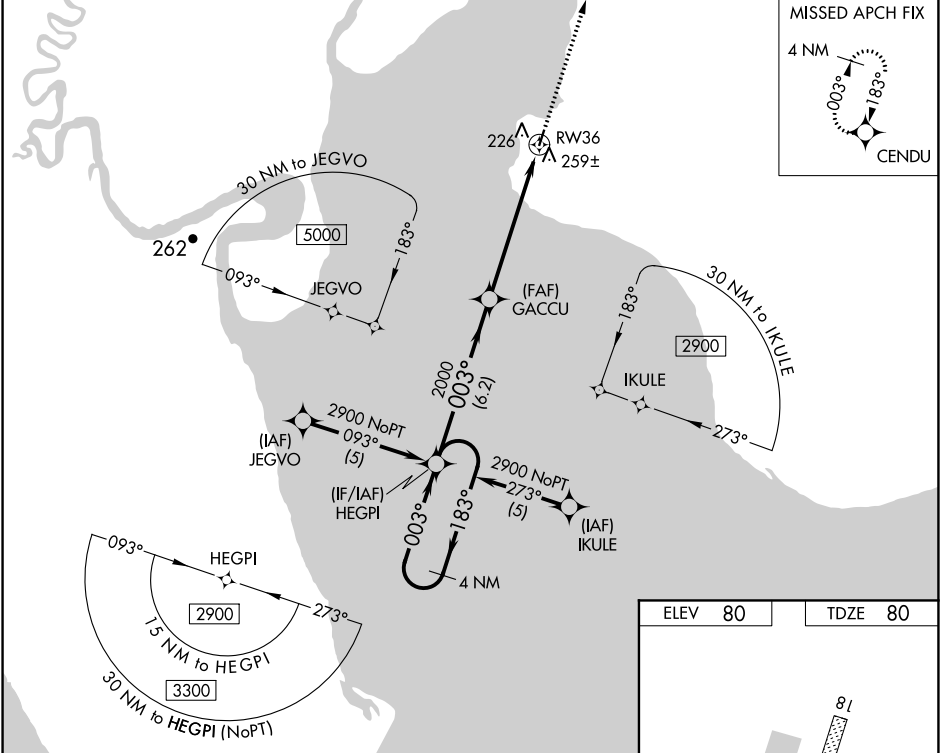
# RNAV (GPS) RWY 36

CLARKS POINT (CLP) (PFCL)

**NA** DME/DME RNP-0.3 NA. Procedure NA at night.  
 When local altimeter setting not received, use Dillingham altimeter setting.  
 Rwy 36 helicopter visibility reduction below 1 SM NA.

**MISSED APPROACH:** Climb to 2900 direct CENDU and hold.

AWOS-3P <b>135.55</b>	DLG/PADL AWOS-3P <b>125.0</b>	ANCHORAGE CENTER <b>132.75 282.35</b>	CTAF <b>122.9</b>
--------------------------	----------------------------------	------------------------------------------	----------------------



CATEGORY	A	B	C	D
LNVA MDA	540-1	460 (500-1)	540-1 1/4 460 (500-1 1/4)	540-1 1/2 460 (500-1 1/2)
CIRCLING	600-1	520 (600-1)	600-1 1/2 520 (600-1 1/2)	640-2 560 (600-2)

AK, 22 APR 2021 to 17 JUN 2021

AK, 22 APR 2021 to 17 JUN 2021