

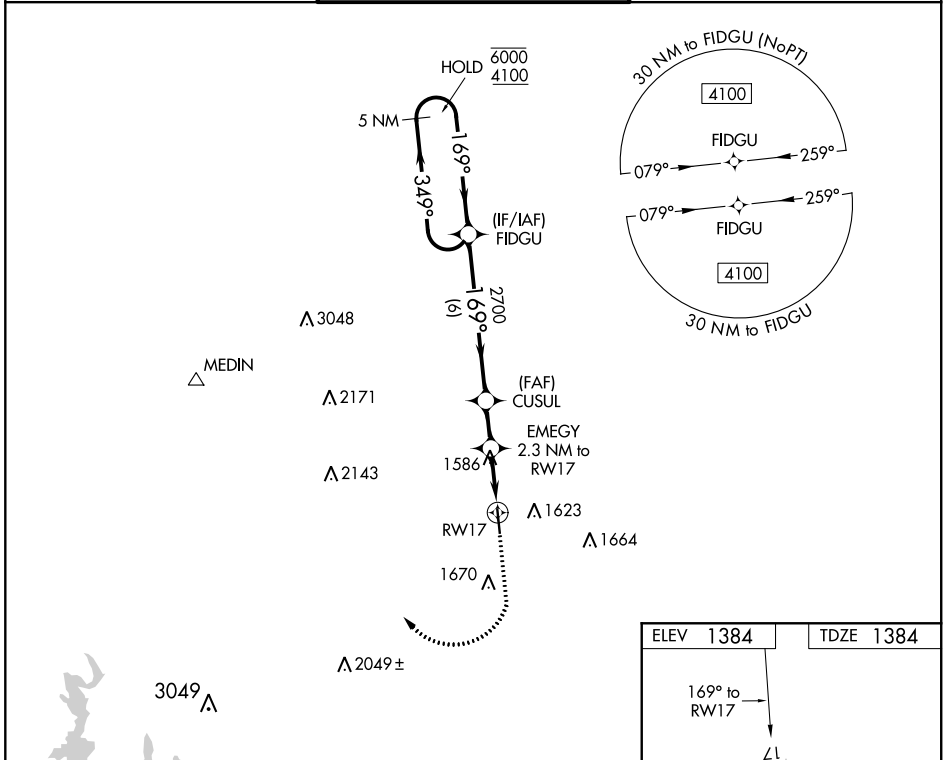
WAAS CH <b>50528</b> <b>W17A</b>	APP CRS <b>169°</b>	Rwy Idg TDZE <b>1384</b> Apt Elev <b>1384</b>	<b>4377</b>
--	------------------------	---	-------------

# RNAV (GPS) RWY 17

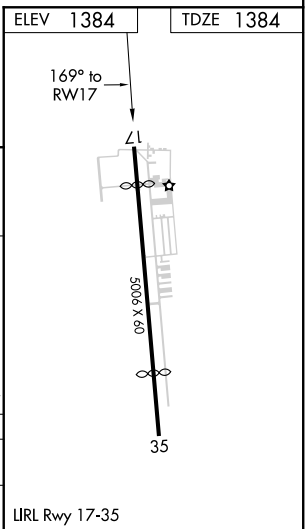
BOERNE STAGE FIELD (5C1)

RNP APCH.	MISSED APPROACH: Climb to 1900 then climbing right turn to 4100 direct MEDIN.
<p>▼ Rwy 17 helicopter visibility reduction below 1 SM NA. When local altimeter setting not received, use KSAT altimeter setting and increase all MDA 120 feet. Procedure NA at night.</p> <p>▲</p>	

AWOS-3 <b>118.725</b>	SAN ANTONIO APP CON <b>125.1 307.0</b>	UNICOM <b>123.0 (CTAF)</b>
--------------------------	---	-------------------------------



5 NM Holding Pattern		FIDGU		CUSUL		EMEGY 2.3 NM to RWY 17		RWY 17	
6000 ← 349°		4100 → 169°		2700		3.00° TCH 40		2140	
		6 NM		1.7 NM		2.3 NM			
CATEGORY	A	B		C		D			
LP MDA	1840-1	456 (500-1)		NA		NA			
LNAV MDA	1840-1	456 (500-1)		NA		NA			



SC-3, 22 APR 2021 to 20 MAY 2021

SC-3, 22 APR 2021 to 20 MAY 2021