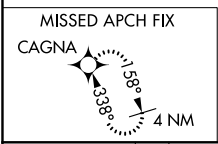
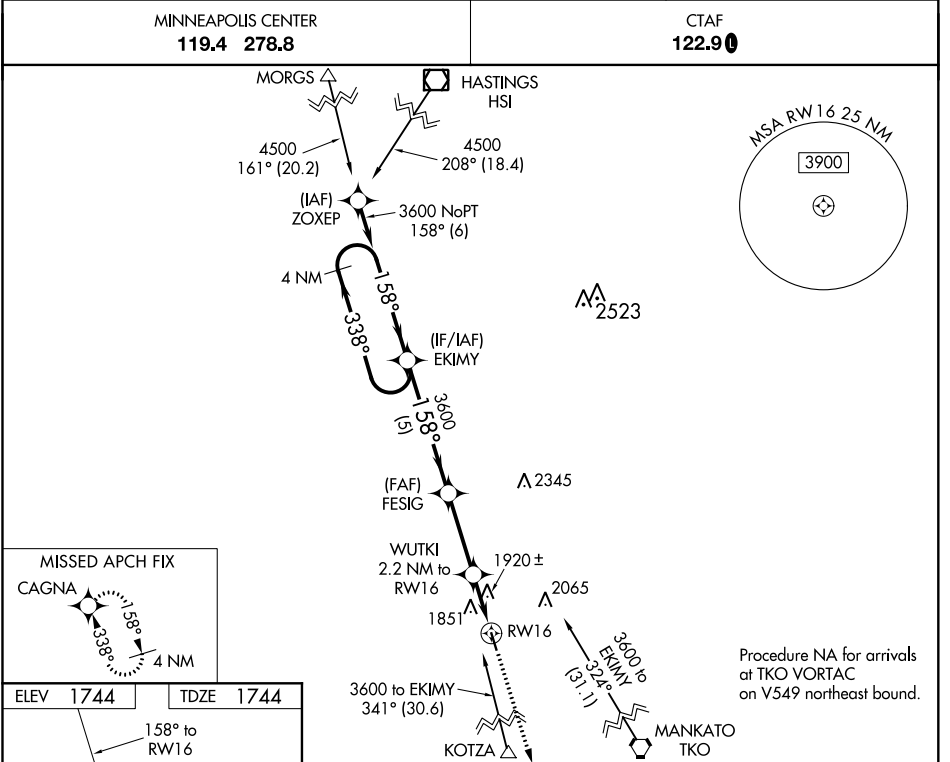


WAAS CH <b>82027</b> <b>W16A</b>	APP CRS <b>158°</b>	Rwy Idg TDZE Apt Elev	<b>3702</b> <b>1744</b> <b>1744</b>
--	------------------------	-----------------------------	---

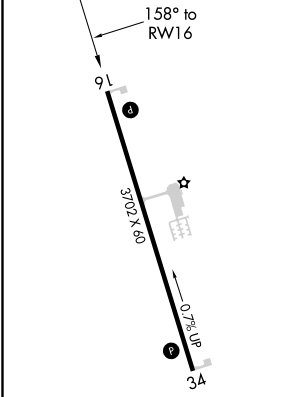
# RNAV (GPS) RWY 16

RED CLOUD MUNI (7V7)

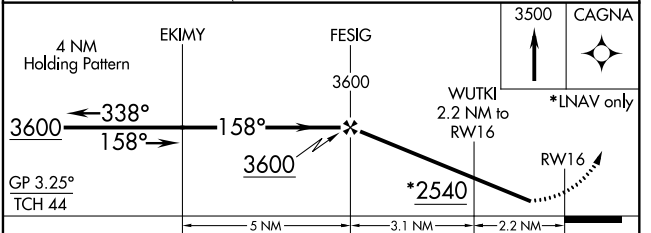
RNP APCH.	<p><b>▽</b> Baro-VNAV NA. Use Smith Center altimeter setting, when not received use Hastings altimeter setting and increase all DA 44 feet and all MDA 60 feet; increase LPV Cats A/B visibility 1/8 mile and LNAV/VNAV Cats A/B visibility 1/4 mile.</p> <p><b>▲</b> NA</p>	MISSED APPROACH: Climb to 3500 direct CAGNA and hold.
MINNEAPOLIS CENTER <b>119.4 278.8</b>		CTAF <b>122.90</b>



ELEV 1744	TDZE 1744
-----------	-----------



MIRL Rwy 16-34 **Ⓛ**  
REIL Rwy 16 and 34 **Ⓛ**



CATEGORY	A	B	C	D
LPV DA	2075-1	331 (400-1)		NA
LNAV/VNAV DA	2198-1 3/8	454 (500-1 3/8)		NA
LNAV MDA	2240-1	496 (500-1)		NA
CIRCLING	2280-1 536 (600-1)	2300-1 556 (600-1)		NA

NC-2, 22 APR 2021 to 20 MAY 2021

NC-2, 22 APR 2021 to 20 MAY 2021