

WAAS CH 61324 W23A	APP CRS 226°	Rwy Idg TDZE Apt Elev	4000 412 412
--	------------------------	-----------------------------	---

RNAV (GPS) RWY 23

HANCOCK CO-RON LEWIS FIELD (KY8)

RNP APCH.

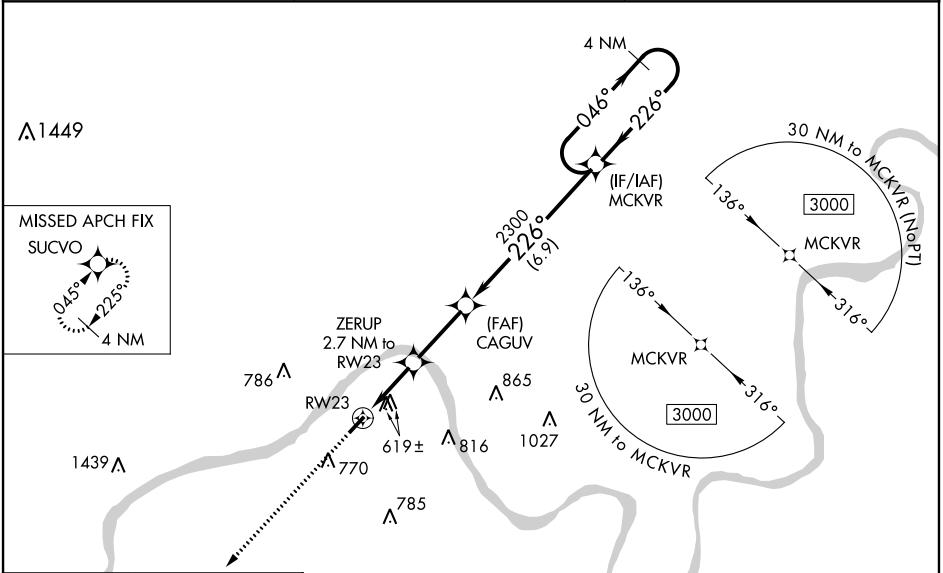
Baro-VNAV NA when using Owensboro altimeter setting. For uncompensated Baro-VNAV systems, LNAV/VNAV NA below -15°C or above 54°C. When local altimeter setting not received, use Owensboro altimeter setting and increase LPV DA to 887, LNAV/VNAV DA to 986 and all MDA 60 feet; increase LPV all Cats and LNAV Cat C visibility 1/8 mile, increase LNAV/VNAV all Cats and Circling Cat C visibility 1/4 mile. Rwy 23 helicopter visibility reduction below 3/4 SM NA.

MISSED APPROACH:
Climb to 3000 direct
SUCVO and hold.

AWOS-3
119.775

EVANSVILLE APP CON ★
124.025 290.9

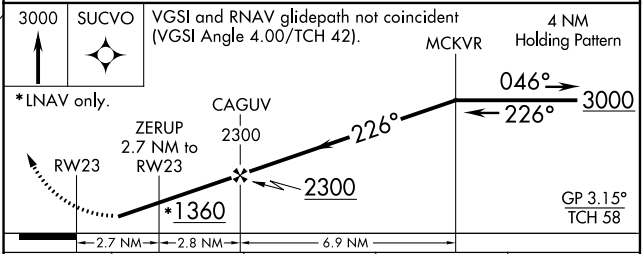
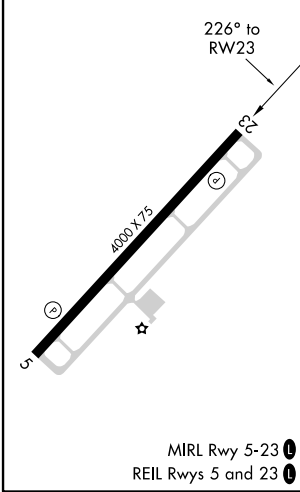
UNICOM
123.0 (CTAF) 0



SE-1, 22 APR 2021 to 20 MAY 2021

SE-1, 22 APR 2021 to 20 MAY 2021

ELEV 412	TDZE 412
----------	----------



CATEGORY	A	B	C	D
LPV DA	841-1 3/8	429 (500-1 3/8)		NA
LNAV/VNAV DA	940-1 5/8	528 (600-1 5/8)		NA
LNAV MDA	880-1	468 (500-1)	880-1 3/8 468 (500-1 3/8)	NA
CIRCLING	980-1 568 (600-1)	1080-1 668 (700-1)	1080-1 3/4 668 (700-1 3/4)	NA