

WAAS CH 93817 W34A	APP CRS 342°	Rwy Idg 10000 TDZE 62 Apt Elev 69
--	------------------------	--

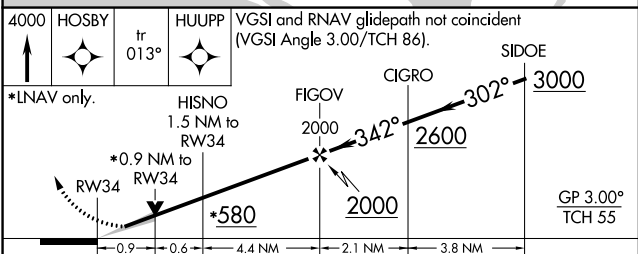
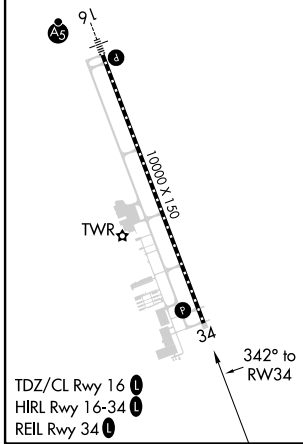
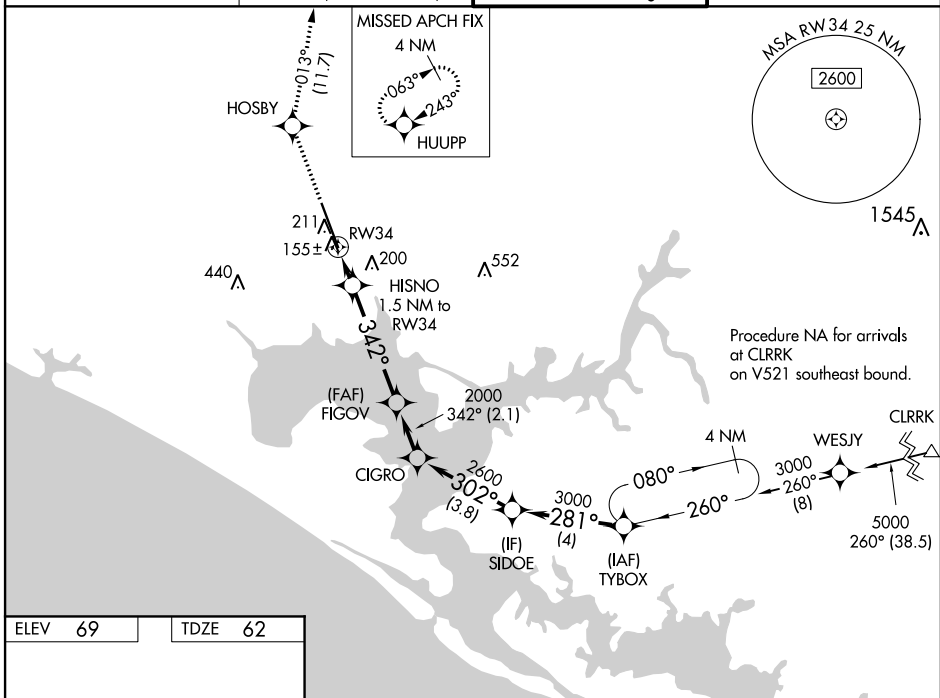
RNAV (GPS) RWY 34

NORTHWEST FLORIDA BEACHES INTL (ECP)

⚠ For uncompensated Baro-VNAV systems, LNAV/VNAV NA below -15°C (5°F) or above 54°C (130°F). DME/DME RNP-0.3 NA. When local altimeter setting not received, use Destin altimeter setting and increase all DA 88 feet, increase all MDA 100 feet, increase LPV all Cats visibility 1/8 mile, increase LNAV/VNAV all Cats visibility 3/8 mile, and increase LNAV Cat C and D visibility 3/8 mile. Baro-VNAV and VDP NA with Destin altimeter setting.

MISSED APPROACH: Climb to 4000 direct HOBY and on track 013° to HUUPP and hold, continue climb-in-hold to 4000.

ATIS 119.975	TYNDALL APP CON* 125.2 (N above 5000')	PANAMA CITY TOWER* 118.95 (CTAF) 0	GND CON 121.65
------------------------	--	---	--------------------------



CATEGORY	A	B	C	D
LPV DA		262-3/4	200 (200-3/4)	
LNAV/VNAV DA		344-7/8	282 (300-7/8)	
LNAV MDA		420-1	358 (400-1)	
C CIRCLING	520-1	451 (500-1)	520-1 1/2 451 (500-1 1/2)	620-2 551 (600-2)

SE-3, 22 APR 2021 to 20 MAY 2021

SE-3, 22 APR 2021 to 20 MAY 2021