

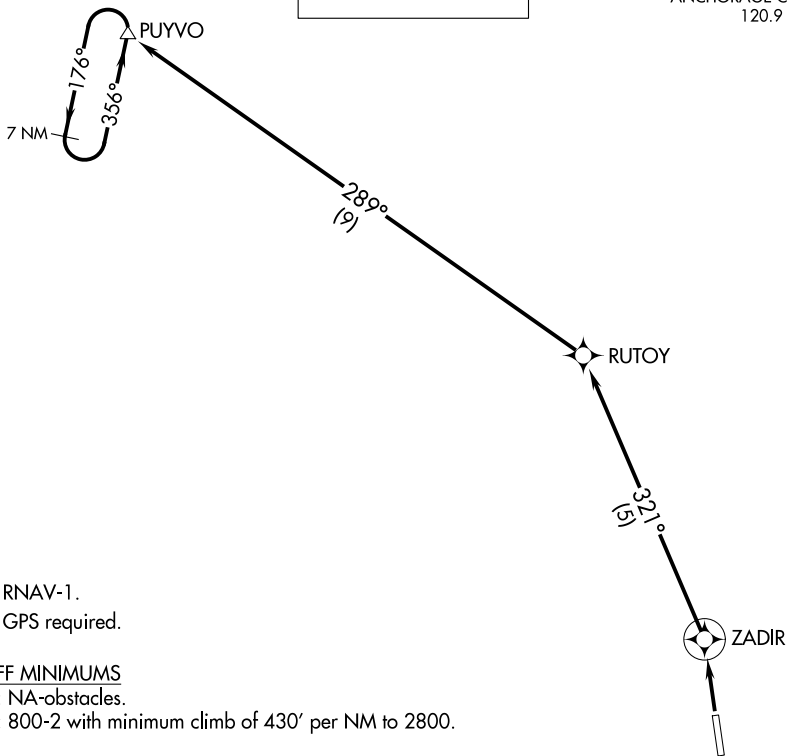
(HEALY1.PUYVO) 20086

# HEALY ONE DEPARTURE (OBSTACLE) (RNAV)

HEALY RIVER (HRR) (PAHV)  
AL-10968 (FAA) HEALY, ALASKA

**TOP ALTITUDE:  
ASSIGNED BY ATC**

INR AWOS-3P  
135.75  
ANCHORAGE CENTER  
120.9 319.2  
CTAF  
122.9



NOTE: RNAV-1.  
NOTE: GPS required.

### TAKEOFF MINIMUMS

Rwy 15: NA-obstacles.  
Rwy 33: 800-2 with minimum climb of 430' per NM to 2800.

### TAKEOFF OBSTACLE NOTES

- Rwy 33: Trees beginning 30' from DER, 318' right of centerline, up to 39' AGL/1277' MSL.
- Trees beginning 125' from DER, 140' right of centerline, up to 42' AGL/1280' MSL.
- Tree 159' from DER, 324' left of centerline, 25' AGL/1308' MSL.
- Trees and vehicle on road beginning 163' from DER, 72' right of centerline, up to 36' AGL/1316' MSL.
- Trees and vehicle on road beginning 6763' from DER, 117' left of centerline, up to 46' AGL/1329' MSL.
- Trees beginning 2809' from DER, 1199' left of centerline, up to 66' AGL/1346' MSL.
- Tree 3767' from DER, 1398' right of centerline, 39' AGL/1365' MSL.
- Tree 4800' from DER, 981' right of centerline, 40' AGL/1406' MSL.
- Tree 1.53 NM from DER, 1520' right of centerline, 46' AGL/1772' MSL.

NOTE: Chart not to scale.

### DEPARTURE ROUTE DESCRIPTION

TAKEOFF RUNWAY 33: Climb direct ZADIR, then on track 321° to RUTOY, then on track 289° to PUYVO, continue climb in PUYVO holding pattern to cross PUYVO at or above MEA for route of flight.

HEALY ONE DEPARTURE (OBSTACLE) (RNAV)  
(HEALY1.PUYVO) 22JUN17

HEALY, ALASKA  
HEALY RIVER (HRR) (PAHV)

AK, 22 APR 2021 to 17 JUN 2021

AK, 22 APR 2021 to 17 JUN 2021