

**MAPLE LAKE MUNI—BILL MAVENCAMP SR FLD** (MGG)(KMG) 1 NE UTC-6(-5DT) N45°14.16'

**TWIN CITIES**

W93°59.14'

L-14H, A

1028 B NOTAM FILE MGG

IAP, AD

**RWY 10-28:** H2796X60 (ASPH) LIRL(NSTD)

**RWY 10:** Thld dsplcd 100'.

**RWY 28:** Trees.

**SERVICE:** FUEL 100LL LGT Rwy 10-28 NSTD LIRL, 400' spacing between lights; 20' from edge.

**AIRPORT REMARKS:** Unattended. Fuel avbl 24 hrs with credit card, fuel grade not mkd on pump. Migratory waterfowl on and invof arpt. One tkof/Indg per flight ops, no tgl or training.

**AIRPORT MANAGER:** 320-963-3738

**WEATHER DATA SOURCES:** AWOS-3 128.325 (320) 963-3300.

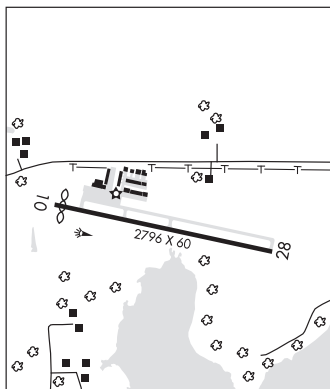
**COMMUNICATIONS:** CTAF/UNICOM 122.8

Ⓡ **MINNEAPOLIS APP/DEP CON** 126.5

**CLEARANCE DELIVERY PHONE:** For CD ctc Minneapolis Apch at 612-726-9086.

**RADIO AIDS TO NAVIGATION:** NOTAM FILE PNM.

**DARWIN (L) VORTAC** 109.0 DWN Chan 27 N45°05.25'  
W94°27.23' 059° 21.8 NM to fld. 1130/7E.



## MARSHALL

**SOUTHWEST MINNESOTA RGNL MARSHALL/RYAN FLD** (MML)(KMML) 1 W UTC-6(-5DT)

**OMAHA**

N44°27.10' W95°49.47'

H-21, L-121

1183 B NOTAM FILE MML

IAP

**RWY 12-30:** H7221X100 (ASPH) S-72, D-105 PCN 27 F/B/X/T HIRL

**RWY 12:** MALSR. PAPI(P4L)—GA 3.0° TCH 50'.

**RWY 30:** MALSF. PAPI(P4L)—GA 3.0° TCH 32'.

**RWY 02-20:** H3999X75 (ASPH) MIRL

**RWY 02:** REIL. PAPI(P4L)—GA 3.0° TCH 32'.

**RWY 20:** REIL. PAPI(P4L)—GA 3.0° TCH 57'.

**SERVICE:** S4 FUEL 100LL, JET A LGT ACTIVATE REIL Rwy 02-20, PAPI Rwy 02 and Rwy 20, MIRL Rwy 02-20, MALSR Rwy 12, MALSF Rwy 30, PAPI Rwy 12 and Rwy 30, HIRL Rwy 12-30—CTAF.

**AIRPORT REMARKS:** Attended Mon-Thu 1400-0000Z. For svc after hrs call 507-532-3164. Self svc fuel avbl 24 hrs with credit card.

**AIRPORT MANAGER:** 507-537-6773

**WEATHER DATA SOURCES:** AWOS-3PT 120.150 (507) 532-5269.

**COMMUNICATIONS:** CTAF/UNICOM 122.8

**MARSHALL RCO** 122.35 (PRINCETON RADIO)

**MINNEAPOLIS CENTER APP/DEP CON** 127.1

**GCO** 121.725 (MINNEAPOLIS CENTER and FLIGHT SERVICES)

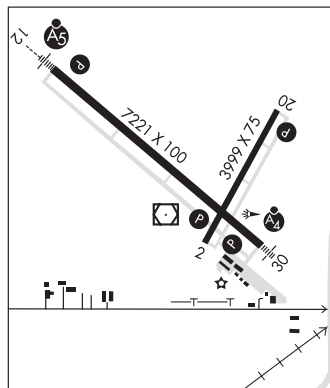
**CLEARANCE DELIVERY PHONE:** For CD if una to ctc on FSS freq, ctc Minneapolis ARTCC at 651-463-5588.

**RADIO AIDS TO NAVIGATION:** NOTAM FILE MML.

**MARSHALL (T) VORW/DME** 111.0 MML Chan 47 N44°26.90' W95°49.49' at fld. 1180/5E. unmonitored.

**GARNO NDB (LOMW)** 253 GB N44°30.12' W95°54.66' 124° 4.8 NM to fld. 1178/5E.

**ILS** 109.7 I-GBY Rwy 12. LOM GARNO NDB. Unmonitored.



**MARSHALL** N44°26.90' W95°49.49' NOTAM FILE MML.

**OMAHA**

(T) **VORW/DME** 111.0 MML Chan 47 at Southwest Minnesota Rgnl Marshall/Ryan Fld. 1180/5E. unmonitored.

L-121

**RCO** 122.35 (PRINCETON RADIO)