

**BOSTON**

**GENERAL EDWARD LAWRENCE LOGAN INTL** (BOS)(KBOS) 1 E UTC-5(-4DT)

**NEW YORK**

N42°21.78' W71°00.38'

19 B LRA Class I, ARFF Index E NOTAM FILE BOS

**COPTER**

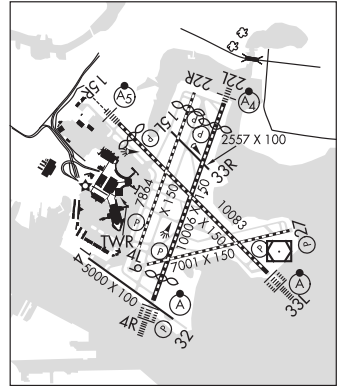
**RWY 15R-33L:** H10083X150 (ASPH-GRVD) S-120, D-250, 2S-175, 2D-550 PCN 90 F/C/W/T HIRL CL

H-10J, 11D, 12K, L-33D, 34J

**RWY 15R:** MALS:R. TDZL. PAPI(P4L)—GA 3.0° TCH 71'. RVR-TMR Thld dspcd 882'. Trees.

**IAP, AD**

**RWY 33L:** ALSF2. TDZL. PAPI(P4R)—GA 3.0° TCH 68'. RVR-TMR Boat.



**RWY 04R-22L:** H10006X150 (ASPH-GRVD) S-120, D-250, 2S-175, 2D-550 PCN 90 F/C/W/T HIRL CL

**RWY 04R:** ALSF2. TDZL. PAPI(P4L)—GA 3.0° TCH 67'. RVR-TMR Thld dspcd 1155'. Boat.

**RWY 22L:** MALS:F. PAPI(P4R)—GA 3.0° TCH 71'. RVR-TMR Thld dspcd 1199'. Boat.

**RWY 04L-22R:** H7864X150 (ASPH-GRVD) S-120, D-250, 2S-175, 2D-550 PCN 90 F/C/W/T HIRL CL

**RWY 04L:** REIL. PAPI(P4L)—GA 3.0° TCH 50'. RVR-TR Boat.

**RWY 22R:** PAPI(P4L)—GA 3.0° TCH 50'. RVR-TR Thld dspcd 819'. Boat.

**RWY 09-27:** H7001X150 (ASPH-GRVD) S-120, D-250, 2S-175, 2D-550 PCN 90 F/C/W/T HIRL CL

**RWY 09:** RVR-TR Boat.

**RWY 27:** REIL. PAPI(P4L)—GA 3.0° TCH 71'. RVR-TR Boat.

**RWY 14-32:** H5000X100 (ASPH-GRVD) S-120, D-250, 2S-175, 2D-490 PCN 85 F/C/W/T HIRL

**RWY 14:** Bldg.

**RWY 32:** REIL. PAPI(P4L)—GA 3.0° TCH 45'.

**RWY 15L-33R:** H2557X100 (ASPH) S-120, D-250, 2S-175, 2D-550 PCN 90 F/C/W/T MIRL

**LAND AND HOLD—SHORT OPERATIONS**

Ldg RWY	HOLD—SHORT POINT	AVBL Ldg DIST
RWY 04L	15L-33R	5250
RWY 15R	09-27	6800
RWY 22L	09-27	6400
RWY 27	04R-22L	5650

**RUNWAY DECLARED DISTANCE INFORMATION**

<b>RWY 04L:</b> TORA-7864 TODA-7864 ASDA-7864 LDA-7864
<b>RWY 04R:</b> TORA-10006 TODA-10006 ASDA-10006 LDA-8851
<b>RWY 09:</b> TORA-7001 TODA-7001 ASDA-7001 LDA-7001
<b>RWY 14:</b> TORA-5000 TODA-5000 ASDA-5000 LDA-5000
<b>RWY 15L:</b> TORA-2557 TODA-2557 ASDA-2557 LDA-2557
<b>RWY 15R:</b> TORA-10083 TODA-10083 ASDA-10083 LDA-9202
<b>RWY 22L:</b> TORA-10006 TODA-10006 ASDA-10006 LDA-8806
<b>RWY 22R:</b> TORA-7864 TODA-7864 ASDA-7864 LDA-7046
<b>RWY 27:</b> TORA-7001 TODA-7001 ASDA-7001 LDA-7001
<b>RWY 32:</b> TORA-5000 TODA-5000 ASDA-5000 LDA-5000
<b>RWY 33L:</b> TORA-10083 TODA-10083 ASDA-10083 LDA-10083
<b>RWY 33R:</b> TORA-2557 TODA-2557 ASDA-2557 LDA-2557

**ARRESTING GEAR/SYSTEM**

**RWY 04L:** EMAS

**RWY 15R:** EMAS

**SERVICE:** S4 FUEL 100LL, JET A **OX** 1, 2, 3, 4 **LGT** Rwy status lights in operation. Rwy 22L VGS! unusable byd 7 degs left of centerline.

**NOISE:** Between 0500-1100Z Rwy 15R is preferential night rwy for tKf and Rwy 33L is preferential ngt rwy for lDg. For noise abatement procedures call 617-561-1636 Mon-Fri 1400-2200Z.

**AIRPORT REMARKS:** Attended continuously. Birds on and in/ov arpt. Numerous cranes on and in/ov arpt. Rwy 14-32 unidirectional, no lDgs Rwy 14, no tKfs Rwy 32. International ramp arrivals must obtain a gate assignment from international ramp control before entering ramp area. No remaining overnight parking for non-tenant charter actf without prior Massport permission. ASDE-X in use. Operate transponders with altitude reporting mode and ADS-B (if equipped) enabled on all airport surfaces. Terminal E, North and South Cargo arrivals etc Massport Gate Control on 131.1 before entering/departing ramp area. Pilots should complete all calculations prior to pushback from gate. Ldg fee. Flight Notification Service (ADCUS) available.

**AIRPORT MANAGER:** 617-567-5400

**WEATHER DATA SOURCES:** ASOS 135.0 (617) 567-5762. TDWR.

**CONTINUED ON NEXT PAGE**

**MASSACHUSETTS**  
**CONTINUED FROM PRECEDING PAGE**

**COMMUNICATIONS: D-ATIS APP** 135.0 **D-ATIS DEP** 135.0 (617) 455-3003 **UNICOM** 122.95

**BOSTON RCO** 122.4 122.1R 112.7T (BRIDGEPORT RADIO)

Ⓡ **BOSTON APP/DEP CON** 127.2 (South) 120.6 (West) 118.25 (North)

Ⓡ **BOSTON DEP CON** 133.0

**BOSTON TOWER** 128.8 (West) 132.225 (East) 124.725 (Helicopters)

**GND CON** 121.9 121.75 **CLNC DEL** 121.65

**PRE TAXI CLNC** 121.65 **RAMP CTL** 134.05

**CPDLC** (LOGON KUSA)

**PDC**

**AIRSPACE: CLASS B** See VFR Terminal Area Chart.

**VOR TEST FACILITY (VOT)** 111.0

**RADIO AIDS TO NAVIGATION:** NOTAM FILE BOS.

**BOSTON (H) VOR/DME** 112.7 BOS Chan 74 N42°21.45' W70°59.37' at fld. 18/16W.

VOR unusable:

061°-104° byd 18 NM blo 2,000'

061°-104° byd 18 NM blo 2,000'

271°-060° byd 25 NM blo 2,000'

271°-060° byd 25 NM blo 3,500'

**ILS/DME** 110.3 I-BOS Chan 40 Rwy 04R. Class IIIE.

**ILS/DME** 110.7 I-MDC Chan 44 Rwy 15R. Class IC. Localizer offset angle 001° 35 min.

**ILS/DME** 110.3 I-LQN Chan 40 Rwy 22L. Class IT. Note \*DME also serves Rwy 04R.

**ILS/DME** 111.3 I-DGU Chan 50 Rwy 27. Class IE.

**ILS/DME** 110.7 I-LIP Chan 44 Rwy 33L. Class IIIE. LOC unsbl byd 33° left side of course.

**COMM/NAV/WEATHER REMARKS:** DME Channel 40 located 2171' from stop end Rwy 04R and 260' left of centerline is common to Rwy 22L.

**CAPE COD** (See MARSTON MILLS on page 128)