

AEROFLEX-ANDOVER (See ANDOVER on page 156)

ALEXANDRIA (See PITTSTOWN on page 172)

ANDOVER

AEROFLEX-ANDOVER (12N) 3 N UTC-5(-4DT) N41°00.52' W74°44.28'

NEW YORK
L-33A, 34H
IAP

583 B NOTAM FILE 12N

RWY 03-21: H1981X50 (ASPH) MIRL

RWY 03: Trees. Rgt tfc.

RWY 21: Tree.

SERVICE: S4 FUEL 100LL LGT ACTVT MIRL Rwy 03-21—122.85.

NOISE: Noise abatement procedures in effect ctc arpt manager 973-786-5100.

AIRPORT REMARKS: Attended Apr-Nov 1400-2300Z, Dec-Mar 1300-2200Z. Deer and birds on and in/ov arpt. Parallel turf rwy rstd use only. No touch and go ldfs. PPR required for ngt trans ctc arpt manager 973-786-5100. Avoid overflying Lake Lenape while on downwind. Arpt rstd to apch category A acft only. Rwy 03-21 lakes at both apch ends. Dirt svc road to terminal area in front of Rwy 03 thld.

AIRPORT MANAGER: 973-786-5100

WEATHER DATA SOURCES: ASOS (917) 786-7221

COMMUNICATIONS: CTAF/UNICOM 122.8

Ⓡ **NEW YORK APP/DEP CON** 127.6

CLEARANCE DELIVERY PHONE: For CD ctc New York Apch at 800-645-3206.

RADIO AIDS TO NAVIGATION: NOTAM FILE MIV.

STILLWATER (L) VOR/DME 109.6 STW Chan 33 N40°59.75' W74°52.14' 094° 6.0 NM to fld. 920/11W.

DME unusable:

089°-099° within 12 NM blo 10,000'

210°-320° byd 30 NM blo 4,000'

ATLANTIC CITY INTL (ACY)(KACY) P (ANG) 9 NW UTC-5(-4DT) N39°27.46' W74°34.63'

WASHINGTON
H-101, 12J, L-34G
IAP, AD

75 B Class I, ARFF Index C NOTAM FILE ACY

RWY 13-31: H10000X150 (ASPH-GRVD) S-85, D-120, 2S-152,

2D-350 PCN 78 F/A/W/T HIRL CL

RWY 13: MALSR. TDZL. PAPI(P4L)—GA 3.0° TCH 71'. RVR-TR Road.

RWY 31: REIL. PAPI(P4L)—GA 3.0° TCH 69'. RVR-TR Antenna.

RWY 04-22: H6144X150 (ASPH-CONC-GRVD) S-75, D-175, 2S-175,

2D-400, 2D/2D2-900 PCN 62 R/A/W/T HIRL

RWY 04: PAPI(P4L)—GA 3.0° TCH 47'. Tree.

RWY 22: VASI(V4L)—GA 3.0° TCH 51'. Trees.

LAND AND HOLD-SHORT OPERATIONS

| LDG RWY | HOLD-SHORT POINT | AVBL LDG DIST |
|---------|------------------|---------------|
| RWY 04 | 13-31 | 3550 |
| RWY 13 | 04-22 | 3600 |
| RWY 31 | 04-22 | 5750 |

RUNWAY DECLARED DISTANCE INFORMATION

| |
|---|
| RWY 04: TORA-6144 TODA-6144 ASDA-6144 LDA-6144 |
| RWY 13: TORA-10000 TODA-10000 ASDA-10000 LDA-10000 |
| RWY 22: TORA-6144 TODA-6144 ASDA-6144 LDA-6144 |
| RWY 31: TORA-10000 TODA-10000 ASDA-10000 LDA-10000 |

ARRESTING GEAR/SYSTEM

RWY 13 BAK-14 BAK-12B (B) (1600') BAK-14 BAK-12B (B) (1600')

RWY 31

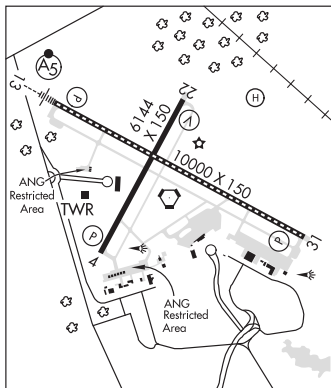
SERVICE: S3 FUEL 100LL, JET A, A++ OX 3 **MILITARY— A-Gear** Avoid centerline lgt dur cable engagement to prevent tailhook bounce. **FUEL** A++ (MIL) (NC-100LL, A) **OIL** JOAP(Mil) **TRAN ALERT** Ltd maint and prk.

NOISE: Noise abatement procedures in effect ctc arpt ops at 609-645-7895 extension 2002.

AIRPORT REMARKS: Attended continuously. No training flts 0400-1200Z. A-Gear Rwy 31 located 1600' from thld, ctc twr for ops. Avoid centerline lights during cable engagement to prevent tailhook bounce. Fox and birds on and in/ov arpt. Twy B has NSTD twy markings between Twy J and Twy K. Twy C clsd to dual tandem and double tandem equipped acft.

Experimental heliport located on N side of arpt rstd to use of FAA project acft only. High performance mil acft opr at arpt. FAA apron PPR call 609-485-6482. US Customs user fee arpt. Customs avbl Mon-Fri 1300-2200Z. Provide minimum 24 hr advance notice to arrange for Customs. All calls to Customs Mon-Fri 1300-2200Z, phone 609-484-1610. U.S. Customs fax 609-484-614. Ldg fee. Parking fee.

MILITARY REMARKS: ANG BASH Phase II in effect Apr thru Oct, ctc base ops on 261.0 or 140.7 for current BASH condition. PPR, ctc ANG base ops C609-761-6009, fax C609-761-6484, command post C609-761-6001. Ltd tran svc avbl 1100-2030Z Tue-Fri, clsd Sat-Mon and hol. NSTD mark on ANG ramp, blue lines delineate F-16 wing tip clnc, yellow lines at hangar doors for personnel clear zone.



CONTINUED ON NEXT PAGE

CONTINUED FROM PRECEDING PAGE

AIRPORT MANAGER: 609-645-7895

WEATHER DATA SOURCES: ASOS (609) 272-9311

COMMUNICATIONS: ATIS 125.725 (609-485-4444)

Ⓡ APP/DEP CON 134.25 (310°-129°) 124.6 (130°-309°)

TOWER 120.3 GND CON 121.9 CLNC DEL 127.85

ANG OPS 140.7

AIRSPACE: CLASS C svc ctc APP CON.

RADIO AIDS TO NAVIGATION: NOTAM FILE ACY.

(L) VORTACW 108.6 ACY Chan 23 N39°27.35' W74°34.58' at fld. 67/10W.

VORTAC unusable:

290°-300° byd 10 NM blo 4,000'

VOR portion unusable:

301°-355° byd 35 NM blo 2,000'

ILS/DME 109.1 I-PVO Chan 28 Rwy 13. Class IT.

ILS/DME 109.1 I-ACY Chan 28 Rwy 31. Class IE.

ASR

HELIPAD H1: H102X102 (ASPH)

BELMAR/FARMINGDALE**MONMOUTH EXEC** (BLM)(KBLM) 5 W UTC-5(-4DT) N40°11.21' W74°07.47'

153 B NOTAM FILE BLM

NEW YORK

H-101, 121, L-34H

IAP

RWY 14-32: H7345X85 (ASPH) MIRL(NSTD) 0.6% up SE

RWY 14: REIL. Trees.

RWY 32: Trees.

RWY 03-21: H3508X50 (ASPH)

RWY 03: Trees.

RWY 21: Tree.

SERVICE: S4 FUEL 100LL, JET A LGT To prearrange for rwy lgts after 0400Z± call 732-751-0044.

AIRPORT REMARKS: Attended 1100-0300Z±. Self svc 100LL avbl 24 hrs.

Jet A avbl 24 hrs. Deer and birds on and invof arpt. Rwy 03-21 clsd to acft over 12500 lbs. No helicopter activity northeast of Rwy 14.

Helicopter instruction by pre-arrangement only 732-938-4800. Rwy 14-32 first 575' at AER 32 85' wide; remainder Rwy 14-32 100' wide. Rwy 14-32 NSTD twy separation 185'. Berm 36' high, north Rwy 14-32 65' from centerline. Loose grvl and broken asph in ramp area east side of arpt. No touch and go llds Fri, Sat, Sun. Twys NSTD markings, rwy hold markings on twys NSTD placement. Twy lines do not ensure wingtip/rotor clnc at NW end of parallel twy. Rwy 14-32 NSTD MIRLS; Rwy 32 thld lgts NSTD. Ldg fee.

AIRPORT MANAGER: (732) 513-8917

WEATHER DATA SOURCES: AWOS-3PT 121.625 (732) 938-3330.

COMMUNICATIONS: CTAF/UNICOM 123.0

Ⓡ MC GUIRE APP/DEP CON 126.475

CLNC DEL 126.15

CLEARANCE DELIVERY PHONE: For CD ctc Mc Guire Apch via freq, if una call 609-754-2767.

RADIO AIDS TO NAVIGATION: NOTAM FILE MIV.

COLTS NECK (L) VORW/DME 115.4 COL Chan 101 N40°18.70' W74°09.58' 179° 7.7 NM to fld. 129/11W.

VOR portion unusable:

031°-179° byd 15 NM blo 6,000'

230°-240° byd 18 NM

241°-329° byd 15 NM blo 3,000'

351°-030° byd 30 NM blo 3,000'

Byd 30 NM blo 6,000'

DME portion unusable:

230°-240° byd 18 NM

ROBBINSVILLE (H) VORTACW 113.8 RBV Chan 85 N40°12.14' W74°29.70' 103° 17.1 NM to fld. 248/10W.

TACAN AZIMUTH unusable:

100°-110°

DME unusable:

075°-080°

100°-114°

130°-160° byd 30 NM blo 4,000'

