

**GENESEO** N42°50.06' W77°43.97' NOTAM FILE BUF.  
 (L) **VOR/DME** 108.2 GEE Chan 19 324° 12.5 NM to Le Roy. 990/9W.  
 VOR portion unusable:  
 208°-224° byd 29 NM blo 5,000'  
 225°-230°  
 231°-245° byd 29 NM blo 5,000'  
 DME unusable:  
 115°-120° byd 29 NM blo 4,000'  
 140°-155° byd 30 NM blo 5,000'  
**RCO** 122.1R 108.2T (BUFFALO RADIO)

**DETROIT**  
 H-10H, 11C, 12J, L-31E, 32F

**GEORGETOWN** N42°47.34' W75°49.60' NOTAM FILE BUF.  
 (L) **VORTACW** 117.8 GGT Chan 125 085° 12.2 NM to Hamilton Muni. 2040/11W.  
 VOR unusable:  
 105°-279° blo 4,000'

**NEW YORK**  
 L-32F

## GHENT

**KLINE KILL** (NY1) 2 N UTC-5(-4DT) N42°21.01' W73°38.22'  
 380 NOTAM FILE BTY  
**RWY 01-19:** 4000X75 (TURF)

**NEW YORK**

**RWY 01:** Trees.  
**RWY 19:** P-line.

**SERVICE:** S2

**AIRPORT REMARKS:** Unattended. Rwy 19 has +16' road, 22' from rwy, at centerline. Unmarked turf area adjacent to rwy may be used for twy on north and south ends. Turf grades near south paved apron unsuitable for acft movement.

**AIRPORT MANAGER:** 518-527-2762

**COMMUNICATIONS:** CTAF 122.9

**CLEARANCE DELIVERY PHONE:** For CD ctc Albany Apch at 518-862-2299.

**GIERMEK EXEC** (See OLEAN on page 232)

## GLENS FALLS

**FLOYD BENNETT MEML** (GFL)(KGFL) 3 NE UTC-5(-4DT) N43°20.47' W73°36.62'

**NEW YORK**  
 H-11C, 12K, L-32G  
 IAP, AD

328 B LRA Class IV, ARFF Index A NOTAM FILE GFL  
**RWY 01-19:** H5000X150 (ASPH-GRVD) S-80, D-110, 2S-117,  
 2D-180 PCN 48 F/A/X/T HIRL

**RWY 01:** MALSR. PAPI(P4L)—GA 3.0° TCH 53'.

**RWY 19:** PAPI(P4L)—GA 3.0° TCH 50'. Trees.

**RWY 12-30:** H3999X100 (ASPH) S-39, D-53, 2D-76  
 PCN 48 F/A/X/T MIRL

**RWY 12:** PAPI(P4L)—GA 3.85° TCH 55'. Trees.

**RWY 30:** PAPI(P4L)—GA 3.0° TCH 45'. Trees.

### RUNWAY DECLARED DISTANCE INFORMATION

**RWY 01:** TORA-5000 TODA-5000 ASDA-5000 LDA-5000

**RWY 12:** TORA-3999 TODA-3999 ASDA-3999 LDA-3999

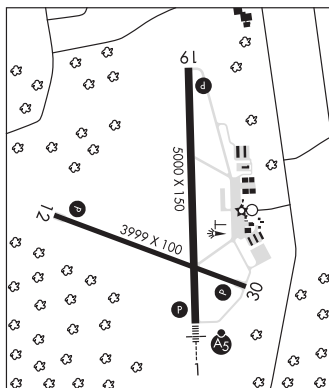
**RWY 19:** TORA-5000 TODA-5000 ASDA-5000 LDA-5000

**RWY 30:** TORA-3999 TODA-3999 ASDA-3999 LDA-3999

**SERVICE:** S4 FUEL 100LL, JET A LGT ACTVT MALSR Rwy 01; PAPI Rwy 01, 19, 12, 30; HIRL Rwy 01-19; MIRL Rwy 12-30; twy lgts—CTAF.

**NOISE:** Noise sensitive area 1.5 miles north. Use NBAA noise abatement procedures. Recommended no touch and go ops from 2200-1200Z±.

**AIRPORT REMARKS:** Attended 1300-2300Z±. Birds and deer on and in/ov arpt. Ultralight activity on and in/ov arpt. Self-svc 100LL fuel avbl. Full svc fueling avbl after hrs by pre-arrangement, call 518-798-3091. PJE airspace defined as 5 NM radius of GFL. Grass cutting equipment ops adjacent to all opr sfcs dalgt hours May thru Oct. During periods of snow removal ops Nov 1-Apr 1 acft must ctc arpt on frequency 123.0 10 minutes prior to ldg. Rwy conditions may not be monitored or reported when the arpt is unattended. Ultralight acft use 500' AGL left tfc for all rwys. Four obstruction lgt poles 1 1/2 mile to 1 3/4 mile N of Rwy 19. Rwy 01 designated as calm wind rwy. Rwy 12 and 19 approaches obscured from one another due to high ground. PPR 48 hrs for acft ops with more than 30 pax seats call AMGR 518-792-5995. For aft hrs acft maint assistance call 518-798-3091. Cold temperature airport. Altitude correction required at or below -19C.  
**AIRPORT MANAGER:** 518-792-5995



CONTINUED ON NEXT PAGE

## CONTINUED FROM PRECEDING PAGE

WEATHER DATA SOURCES: ASOS 119.925 (518) 743-1728.

COMMUNICATIONS: CTAF/UNICOM 123.0

GLENS FALLS RCO 122.2 (BURLINGTON RADIO)

Ⓡ ALBANY APP/DEP CON 132.825

CLEARANCE DELIVERY PHONE: For CD ctc Albany Apmh at 518-862-2299.

AIRSPACE: CLASS E.

RADIO AIDS TO NAVIGATION: NOTAM FILE BTV.

CAMBRIDGE (L) VORW/DME 115.0 CAM Chan 97 N42°59.66' W73°20.64' 345° 23.9 NM to fld. 1490/14W.

DME portion unusable:

040°-130° blo 9,000'

GANSE NDB (LOMW) 209 GF N43°15.30' W73°36.31' 011° 5.2 NM to fld. 228/14W. NOTAM FILE GFL.

ILS 110.7 I-GFL Rwy 01. Class IT. LOM GANSE NDB.

## GORHAM

MIDLAKES (92G) 3 W UTC-5(-4DT) N42°48.85' W77°12.18'

DETROIT

1080 NOTAM FILE BUF

RWY 14-32: 1820X55 (TURF) 1.1% up SE

RWY 14: Trees.

RWY 32: Road.

AIRPORT REMARKS: Attended irregularly. Rwy 14-32 soft and wet during Mar-Jun. Rwy 32 +80' trees 735' from thld +80' left and right of centerline. Rwy 14-32 marked with orange cones.

AIRPORT MANAGER: 585-764-1802

COMMUNICATIONS: CTAF/UNICOM 122.8

CLEARANCE DELIVERY PHONE: For CD ctc Cleveland ARTCC at 440-774-0490.

GOWANDA (D59) 3 N UTC-5(-4DT) N42°30.24' W78°57.04'

DETROIT

830 NOTAM FILE BUF

RWY 09-27: 3430X100 (TURF) LIRL(NSTD)

RWY 09: Tree. Rgt tfc.

RWY 27: Thld dspcld 1132'. Rgt tfc.

SERVICE: FUEL 80, 100 LGT SS-SR. Rwy 09-27 rwy lgts OTS indef.

AIRPORT REMARKS: Unattended. Rwy 09-27 soft and wet Mar-Jun. Truck tfc near Rwy 27. Rwy 09-27 dirt road crosses rwy at approximately midpoint of rwy. Rwy 27, 88' high conveyor belt/crane and dirt pile, 200' from AER, 81' left. Rwy 09-27 NSTD LIRL, dspcl portion of rwy has blue lgts. Dspcl thld, several lgts knocked down, bulbs missing, dspcl thld unmarked. No lights on first 200' of Rwy 27. Bulbs missing from REIL.

AIRPORT MANAGER: 716-532-3371

COMMUNICATIONS: CTAF 122.9

CLEARANCE DELIVERY PHONE: For CD ctc Cleveland ARTCC at 440-774-0490.

GREAT VALLEY (N56) 1 SE UTC-5(-4DT) N42°12.30' W78°38.84'

DETROIT

1450 NOTAM FILE BUF

RWY 06-24: 3800X90 (TURF) LIRL(NSTD)

RWY 06: Tree. Rgt tfc.

RWY 24: Tree. Rgt tfc.

SERVICE: LGT ACTIVATE LIRL Rwy 06-24-CTAF.

AIRPORT REMARKS: Attended dalgt hrs. Arpt dalgt ops only. For rwy conds Nov-Apr call 716-490-1134. Rwy 06 +6' brush 40' from rwy end both sides of centerline, trees 30'-80', 100'-300' fm rwy end. 90'-200' left of centerline. Rwy 24 +44' tree 164' fm rwy end 80' left of centerline. Rwy 06-24 LIRL NSTD due to spacing. Rwy 24 unlighted first 400'.

Rwy 06-24 LIRL NSTD due to spacing. Rwy 24 unlighted first 400'.

AIRPORT MANAGER: 716-490-1134

COMMUNICATIONS: CTAF 122.9

CLEARANCE DELIVERY PHONE: For CD ctc Cleveland ARTCC at 440-774-0227.

GREATER BINGHAMTON/EDWIN A LINK FLD (See BINGHAMTON on page 187)

GREEN ACRES (See LIVINGSTON on page 214)