

WALLOPS FLIGHT FACILITY (WAL)(KWAL) NASA 5 S UTC-5(-4DT) N37°56.41' W75°27.98' WASHINGTON
 40 B NOTAM FILE WAL Not insp. H-101, 121, L-361
 IAP, AD

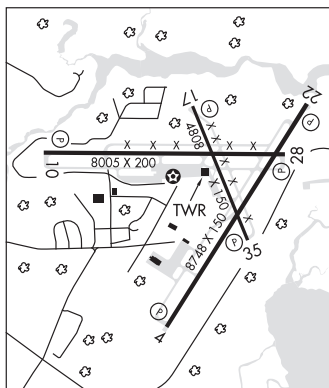
- RWY 04-22: H8748X150 (ASPH-CONC) S-57, D-115, 2D-225 HIRL
- RWY 04: REIL. PAPI(P4L)—GA 3.0° TCH 57'.
- RWY 22: REIL. PAPI(P4L)—GA 3.0° TCH 60'.
- RWY 10-28: H8005X200 (ASPH-CONC) S-57, D-115, 2D-225 HIRL
- RWY 10: REIL. PAPI(P4L)—GA 3.0° TCH 69'.
- RWY 28: REIL. PAPI(P4L)—GA 3.0° TCH 61'.
- RWY 17-35: H4808X150 (ASPH) S-15, D-40, 2D-75 HIRL
- RWY 17: REIL. PAPI(P4L)—GA 3.0° TCH 63'.
- RWY 35: REIL. PAPI(P4L)—GA 3.0° TCH 59'.

ARRESTING GEAR/SYSTEM

HOOK E28(B) (1500). RWY 22

SERVICE: FUEL JET A MILITARY—LGT ACTIVATE—Rwy lgt and Rot
 Bcn—CTAF. FUEL A+ A—GEAR E-28 arresting gear 1500' from the north
 end of Rwy 22 is rigged/in battery.

MILITARY REMARKS: Rwy 17-35 CLOSED when twr clsd. Deer and birds on
 and in/ovf arpt. Touch and go lds NA when twr clsd. PPR 24 hr PN to
 ldg, phone 757-824-1688. When twr clsd, 126.5 CTAF only. Expect
 no resp or advisory svcs. Mil turboprop training daily until 0400Z.
 Extensive research test development in progress. Numerous radar
 facilities at arpt with possible radio frequency haz to ordnance. Space
 Launch Activity Area - See Special Notices.



AIRPORT MANAGER: 757-824-1250

WEATHER DATA SOURCES: ASOS 119.175 (757) 824-0820.

COMMUNICATIONS: CTAF 126.5 ATIS 119.175 (757) 824-0820

Ⓡ PATUXENT APP/DEP CON 127.95 (1200-0400Z‡ Mon-Sun. Other times by NOTAM) other times ctc

Ⓡ POTOMAC APP/DEP CON 127.2

TOWER 126.5 (1200-0400Z‡ Mon-Sun. Other times by NOTAM.) GND CON 127.875 CLNC DEL 121.7 INFO SVC 126.5
 (2230-1200Z‡)

CLEARANCE DELIVERY PHONE: For CD when NHK ATCT/Apch are clsd ctc Potomac Apch at 866-640-4124.

AIRSPACE: CLASS D svc 1300-2200Z‡ Mon-Fri exc fed hol and by NOTAM; other times CLASS E.

RADIO AIDS TO NAVIGATION: NOTAM FILE DCA.

SNOW HILL (L) VORTACW 112.4 SWL Chan 71 N38°03.40' W75°27.83' 189° 7.0 NM to fld. 34/8W.

VOR unusable:

- 005°-020° byd 25 NM blo 1,500'
- 020°-040° byd 20 NM blo 1,700'
- 040°-045° byd 10 NM blo 2,000'
- 210°-225° byd 13 NM blo 4,000'
- 210°-225° byd 18 NM blo 6,000'
- 210°-225° byd 37 NM
- 225°-265° byd 10 NM blo 2,500'
- 225°-265° byd 30 NM blo 9,000'
- 265°-005° byd 20 NM blo 1,500'

TACAN AZIMUTH OTS

COMM/NAV/WEATHER REMARKS: Communication on CTAF required.