

**KALISPELL CITY** (S27) 1 S UTC-7(-6DT) N48°10.71' W114°18.22'

**GREAT FALLS**

2932 B NOTAM FILE GTF

L-13C

**RWY 13-31:** H3600X60 (ASPH) S-4 LIRL(NSTD)

**RWY 13:** Tree.

**RWY 31:** Thld dspclcd 155'. Tower.

**SERVICE:** S4 **FUEL** 100LL, JET A **LGT** ACTIVATE LIRL Rwy 13-31—CTAF.

**AIRPORT REMARKS:** Attended 1500-0000Z†. Parachute Jumping. Ultralights on and infov arpt. Balloon activity on and infov arpt. Twr 400' AGL 3 miles East unlgtd. Rwy 31 lgtd thld relocated 155' for ngt ops, 3445' of Rwy 13-31 usable at ngt. Rwy 13-31 NSTD LIRL. Rwy 13 thld lgts lctd at end of rwy.

**AIRPORT MANAGER:** (406) 755-2376

**COMMUNICATIONS:** CTAF/UNICOM 122.8

**LAKESIDE RCO** 122.5 (GREAT FALLS RADIO)

**RADIO AIDS TO NAVIGATION:** NOTAM FILE FCA.

(H) **VOR/DME** 113.2 FCA Chan 79 N48°12.85' W114°10.55' 229° 5.6 NM to fld. 2984/18E.

VOR/DME unusable:

010°-070° byd 10 NM

160°-280° byd 30 NM blo 13,000'

350°-010° byd 10 NM blo 23,000'

VOR unusable:

070°-088° byd 20 NM blo 16,000'

088°-113° byd 22 NM blo 13,000'

088°-113° byd 35 NM blo 16,000'

DME unusable:

070°-113° byd 20 NM blo 16,000'

070°-113° byd 37 NM

**KNOX RIDGE** (See WINIFRED on page 127)

**L M CLAYTON** (See WOLF POINT on page 129)

**LAKESIDE** N48°00.68' W114°21.88'

**GREAT FALLS**

**RCO** 122.5 (GREAT FALLS RADIO)

L-13B

**LAUREL MUNI** (6S8) 2 N UTC-7(-6DT) N45°42.31' W108°45.65'

**BILLINGS**

3543 B NOTAM FILE GTF

H-1E, L-13D

**RWY 04-22:** H5199X75 (ASPH) S-12.5 MIRL 0.6% up SW

IAP

**RWY 04:** PAPI(P2L)—GA 3.0° TCH 34'.

**RWY 22:** PAPI(P2L)—GA 3.0° TCH 41'.

**RWY 14-32:** H3002X60 (ASPH) S-12.5 MIRL 2.0% up NW

**RWY 14:** PAPI(P2L)—GA 4.0° TCH 21'.

**RWY 32:** PAPI(P2L)—GA 3.0° TCH 21'.

**RWY 09-27:** 1100X60 (TURF) 2.2% up W

**SERVICE:** **FUEL** 100, JET A **LGT** ACTVT PAPI RWY 04 & 22 & 14 & 32; MIRL RWY 04-22 & RWY 14-32—CTAF.

**AIRPORT REMARKS:** Attended Mon-Fri 1500-0000Z†, Sat-Sun intermittently. Parachute Jumping. Ultralights on and infov arpt. Numerous deer and antelope on and infov rwy. Intermittent snow removal, be alert during winter months. Rwy 09-27 not maintained during winter. Rwy 09-27 marker cones full rwy length.

**AIRPORT MANAGER:** (406) 698-6515

**WEATHER DATA SOURCES:** AWOS-2 135.05 (406) 628-9867.

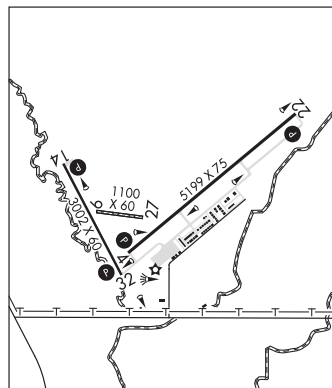
**COMMUNICATIONS:** CTAF/AUNICOM 123.05

Ⓡ **BILLINGS APP/DEP CON** 119.2 120.5

**CLEARANCE DELIVERY PHONE:** For CD ctc Billings Apch at 406-255-2798

**RADIO AIDS TO NAVIGATION:** NOTAM FILE BIL.

**BILLINGS (H) VORTACW** 114.5 BIL Chan 92 N45°48.51' W108°37.48' 209° 8.4 NM to fld. 3811/14E.



**LAVINA** (80S) 2 NW UTC-7(-6DT) N46°18.44' W108°57.29'

**BILLINGS**

3512 NOTAM FILE GTF

**RWY 07-25:** 3460X100 (TURF) 0.7% up W

**AIRPORT REMARKS:** Unattended. No snow removal. Rwy 07-25 very muddy when wet, rough with gopher holes. Rwy 07-25 marked with cones full rwy length.

**AIRPORT MANAGER:** 406-444-2506

**COMMUNICATIONS:** CTAF 122.9

**CLEARANCE DELIVERY PHONE:** For CD ctc Billings Apch at 406-255-2798