

MERIDIAN**KEY FLD** (MEI)(KMEI) P (ANG ARNG) 3 SW UTC-6(-5DT) N32°19.96' W88°45.11'

298 B Class I, ARFF Index A NOTAM FILE MEI

RWY 01-19: H10003X150 (ASPH-CONC) S-105, D-175, 2S-175,

2D-325 PCN 52 F/C/W/T HIRL

RWY 01: MALSR. PAPI(P4L)—GA 3.0° TCH 54'. RVR-T Thld dsplcd 990'.**RWY 19:** MALSR. PAPI(P4L)—GA 3.0° TCH 69'. RVR-T Thld dsplcd 990'.**RWY 04-22:** H4599X150 (ASPH) S-78, D-118, 2D-211

PCN 30 F/B/W/T MIRL

RWY 04: PAPI(P2L)—GA 3.13° TCH 19'. Trees.**RWY 22:** PAPI(P2L)—GA 3.59° TCH 20'. Pole.**RUNWAY DECLARED DISTANCE INFORMATION****RWY 01:** TORA-10003 TODA-10003 ASDA-10003 LDA-9013**RWY 04:** TORA-4599 TODA-4599 ASDA-4599 LDA-4599**RWY 19:** TORA-10003 TODA-10003 ASDA-10003 LDA-9013**RWY 22:** TORA-4599 TODA-4599 ASDA-4599 LDA-4599**SERVICE:** S4 FUEL 100, JET A, A++ OX 1, 2 LGT ACTIVATE MALSR

Rwy 01 and Rwy 19, MIRL Rwy 04-22, HIRL Rwy 01-19, twy

lgtS—CTAF. **MILITARY— JASU 10**(M32A-60) (MD-3A) (MA-1A) (MC-1)

(MC-2A) FUEL A++(Mil) A+(avbl 1100-0400Z†, C601-693-7282,

OT 2 hr PN rqr.) (NC-100, A) FLUID SP PRESAIR OIL

O-132-133-148(Mil)

AIRPORT REMARKS: Attended 1200-0400Z†. For attendant after hrs call 601-693-7282. ANG provides twr svcs at KMEI.

Rwy 01-19 disp thld conc. Rwy 04-22 pavement in poor condition.

MILITARY REMARKS: Opr 1200-0400Z†, OT fone C601-693-7282. **CAUTION BASH** Phase II period Mar-May, Sep-Nov. Ctc Aflld Mgmt, SOF, Comd Post for current Bird Watch Cond. **ANG** Attended 1300-2230Z† Mon-Fri exc hol. ANG ramp clsd exc PPR, 601-484-9734/9714. ANG DSN 293-2829 C601-696-8829. RCR info avbl fr ANG OPS dur nml duty hr.**AIRPORT MANAGER:** 601-482-0364**WEATHER DATA SOURCES:** ASOS (601) 693-5650**COMMUNICATIONS:** CTAF 133.975 ATIS 126.475 UNICOM 122.95

MERIDIAN RCO 122.1R 117.0T (GREENWOOD RADIO)

Ⓡ MERIDIAN APP/DEP CON 120.5 Opr 1200-0400Z† other times by NOTAM. Other times ctc

Ⓡ MEMPHIS CENTER APP/DEP CON 125.975

TOWER 133.975 (1200-0400Z†), other times by NOTAM.

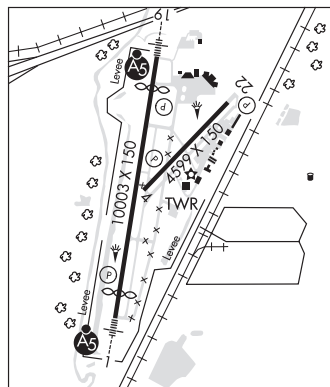
GND CON 121.9 CLNC DEL 121.9

CLEARANCE DELIVERY PHONE: For CD when ATCT open, ctc gnd. for CD when ATCT clsd, ctc Meridian Apch 601-679-3691. when Meridian Apch clsd ctc Memphis ARTCC at 901-368-8453/8449.**AIRSPACE:** CLASS D svc 1200-0400Z†; other times by NOTAM; other times CLASS G.**RADIO AIDS TO NAVIGATION:** NOTAM FILE MEI.**MERIDIAN (H) VORTAC** 117.0 MEI Chan 117 N32°22.71' W88°48.26' 131° 3.8 NM to fld. 578/5E.

ILS 110.1 I-MEI Rwy 01. Class IA. Unmonitored when ATCT closed.

ILS/DME 111.35 I-IKQ Chan 50(Y) Rwy 19.

ASR/PAR

**MEMPHIS**
H-6J, L-18G
IAP, AD