

TYLER POUNDS RGNL (TYR)(KTYR) 3 W UTC-6(-5DT) N32°21.21' W95°24.18'

DALLAS-FT WORTH

544 B Class I, ARFF Index B NOTAM FILE TYR

H-6I, L-17D

RWY 04-22: H8334X150 (CONC-GRVD) S-120, D-222, 2S-84,
2T-223, 2D-357, 2D/D1-212, C5-342 HIRL

RWY 04: MALSR. PAPI(P4L)—GA 3.0° TCH 55'.

RWY 22: REIL. PAPI(P4L)—GA 3.0° TCH 54'. Thld displcd 600'. Tree.

RWY 13-31: H5200X150 (ASPH-GRVD) S-40, D-60, 2D-100 HIRL
0.5% up SE

RWY 13: Pole.

RWY 31: VASI(V4L)—GA 3.0° TCH 54'. Road.

RWY 18-36: H4832X150 (ASPH-GRVD) S-109, D-172, 2D-289
MIRL

RWY 18: Tree.

RWY 36: Tree.

RUNWAY DECLARED DISTANCE INFORMATION

RWY 04: TORA-8334 TODA-8334 ASDA-7748 LDA-7748

RWY 13: TORA-5200 TODA-5200 ASDA-5200 LDA-5200

RWY 18: TORA-4832 TODA-4832 ASDA-4832 LDA-4832

RWY 22: TORA-8334 TODA-8334 ASDA-8334 LDA-7734

RWY 31: TORA-5200 TODA-5200 ASDA-5200 LDA-5200

RWY 36: TORA-4832 TODA-4832 ASDA-4832 LDA-4832

SERVICE: S4 FUEL 100LL, JET A OX 1, 3 LGT When ATCT clsd actvt

MALSR Rwy 04; REIL Rwy 22; HIRL Rwy 04-22; MIRL Rwy 18-36; twy lgts—CTAF. HIRL Rwy 13-31 preset med intst, to incr instst actvt—CTAF. PAPI Rwy 04 and 22, VASI Rwy 31 opr consly. Rwy 22 VGSI unusbl byd 9 deg left and right of cntrln.

NOISE: Noise abatement procedures in effect Call 903-590-3048.

AIRPORT REMARKS: Attended 1100-0400Z†. West side passenger terminal ramp access rstd to air carrier. Conditions not monitored btn the hrs of 9:30 PM and 6:30 AM local.

AIRPORT MANAGER: 903-531-2343

WEATHER DATA SOURCES: ASOS (903) 535-9105 LAWRS.

COMMUNICATIONS: CTAF 120.1 ATIS 126.25 UNICOM 122.95

RCO 122.3 (FORT WORTH RADIO)

Ⓡ LONGVIEW APP/DEP CON 128.75 (1200-0400Z†)

Ⓡ FORT WORTH CENTER APP/DEP CON 135.25 (0400-1200Z†)

TOWER 120.1 (1230-0330Z†) GND CON 121.9

CLEARANCE DELIVERY PHONE: For CD if una to ctc on FSS freq, ctc Fort Worth ARTCC at 817-858-7584.

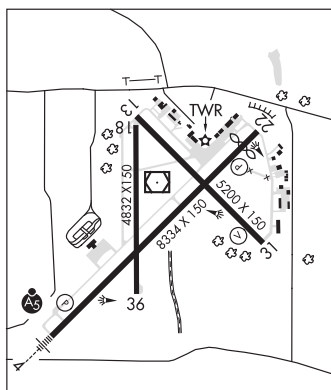
AIRSPACE: CLASS D svc 1230-0330Z†; other times CLASS G.

RADIO AIDS TO NAVIGATION: NOTAM FILE TYR.

(T) VORW/DME 114.2 TYR Chan 89 N32°21.35' W95°24.21' at fld. 564/6E.

ILS/DME 111.95 I-TYR Chan 56(Y) Rwy 04. Class IE. Unmonitored when ATCT clsd. DME unusable byd 20° left of course.

COMM/NAV/WEATHER REMARKS: Helicopters operating inbound or outbound to/from the downtown hospitals state intention on 123.075.

**UPTON CO** (See MC CAMEY on page 356)**UVALDE****GARNER FLD** (UVA)(KUVA) 3 E UTC-6(-5DT) N29°12.68' W99°44.62'

SAN ANTONIO

942 B NOTAM FILE UVA

H-7B, L-19B

RWY 15-33: H5256X100 (ASPH) S-30, D-40, 2D-40 MIRL 0.3% up NW

RWY 15: REIL. PAPI(P4L)—GA 3.0° TCH 36'. Trees.

RWY 33: REIL. PAPI(P4L)—GA 3.0° TCH 35'.

SERVICE: S4 FUEL 100LL, JET A OX 1, 2, 3, 4 LGT Actvt REIL Rwy 15 and 33; MIRL Rwy 15-33—CTAF.

AIRPORT REMARKS: Attended 1300-0100Z†. Self svc 100LL with major credit card. Turf strip 3300 ft X 75 ft parl to and east of Rwy 15-33 used by crop dusters only.

AIRPORT MANAGER: 830-278-3315

WEATHER DATA SOURCES: AWOS-3 124.175 (830) 278-8862.

COMMUNICATIONS: CTAF/UNICOM 122.8

UVALDE RCO 122.5 (SAN ANGELO RADIO)

Ⓡ HOUSTON CENTER APP/DEP CON 134.95

CLEARANCE DELIVERY PHONE: For CD if una to ctc on FSS freq, ctc Houston ARTCC at 281-230-5622.

RADIO AIDS TO NAVIGATION: NOTAM FILE ERV.

CENTER POINT (H) VORTAC 117.5 CSI Chan 122 N29°55.34' W99°12.87' 205° 50.8 NM to fld. 2079/8E.

UVALDE NDB (MHW) 281 UVA N29°10.66' W99°43.54' 328° 2.2 NM to fld. 7E. NOTAM FILE UVA.