

**MIAMI INTL** (MIA)(KMIA) 8 NW UTC-5(-4DT) N25°47.72' W80°17.41'

**MIAMI**

9 B AOE LRA Class I, ARFF Index E NOTAM FILE MIA

**H-81, L-23C, A**

**RWY 09-27:** H13016X150 (ASPH-GRVD) S-130, D-210, 2S-175,

2D-420, 2D/2D2-850 PCN 70 F/A/X/T HIRL CL

**RWY 09:** MALSR. PAPI(P4L)—GA 3.0° TCH 72'. RVR-TMR Thld dspclcd 1358'. Railroad. Rgt tfc.

**RWY 27:** MALSR. PAPI(P4L)—GA 3.0° TCH 71'. RVR-TMR Thld dspclcd 261'.

**RWY 08R-26L:** H10506X200 (ASPH-GRVD) S-130, D-210, 2S-175,

2D-420, 2D/2D2-850 PCN 70 F/A/X/T HIRL CL

**RWY 08R:** MALSR. TDZL. PAPI(P4L)—GA 3.0° TCH 77'. RVR-TR

**RWY 26L:** MALSF. PAPI(P4L)—GA 3.0° TCH 73'. RVR-TR Rgt tfc.

**RWY 12-30:** H9360X150 (ASPH-GRVD) S-130, D-210, 2S-175,

2D-420, 2D/2D2-850 PCN 70 F/A/X/T HIRL CL

**RWY 12:** MALSR. PAPI(P4R)—GA 3.0° TCH 72'. RVR-TR Tower.

**RWY 30:** MALSR. PAPI(P4L)—GA 3.0° TCH 71'. RVR-TR Thld dspclcd 945'. Tree.

**RWY 08L-26R:** H8600X150 (ASPH-GRVD) S-130, D-210, 2D-420,

2D/2D2-850 PCN 70 F/A/X/T HIRL CL

**RWY 08L:** REIL. PAPI(P4L)—GA 3.0° TCH 60'.

**RWY 26R:** REIL. PAPI(P4L)—GA 3.0° TCH 60'.

**LAND AND HOLD-SHORT OPERATIONS**

LDG RWY	HOLD-SHORT POINT	AVBL LDG DIST
RWY 09	12-30	9749
RWY 12	09-27	8100

**RUNWAY DECLARED DISTANCE INFORMATION**

<b>RWY 08L:</b> TORA-8600 TODA-8600 ASDA-8600 LDA-8600
<b>RWY 08R:</b> TORA-10506 TODA-10506 ASDA-10506 LDA-10506
<b>RWY 09:</b> TORA-13016 TODA-13016 ASDA-12755 LDA-11397
<b>RWY 12:</b> TORA-9355 TODA-9355 ASDA-8579 LDA-8579
<b>RWY 26L:</b> TORA-10506 TODA-10506 ASDA-10220 LDA-10220
<b>RWY 26R:</b> TORA-8600 TODA-8600 ASDA-8600 LDA-8600
<b>RWY 27:</b> TORA-13016 TODA-13016 ASDA-13016 LDA-12755
<b>RWY 30:</b> TORA-9355 TODA-9355 ASDA-8853 LDA-7913

**SERVICE:** S4 FUEL 100, JET A 0X 1, 2, 3, 4

**NOISE:** All turbojet acft use dsnt noise abatement dep profile from all rwys exc A320, B727, B737-800, B767-400, and DC9 which should use close-in noise abatement profile.

**AIRPORT REMARKS:** Attended continuously. CLOSED non-engine acft. Rwy 08L-26R CLOSED 0200-1100Z† when Rwy 08R-26L and Rwy 09-27 are in use. Rwy 12-30 CLOSED 0200-1100Z† when Rwy 08R-26L and Rwy 09-27 are in use. Birds on and invof arpt. PPR 3 hrs prior to all arr on the General Aviation Center (GAC) ramp 305-876-7550 ctc Ramp Ctl and upon arr on freq 131.600. Acft with wingspan greater than 78' are prohibited from entering the GAC ramp. Acft with a wingspan greater than 171' are prohibited from taxiing on Twy P, east of Twy U. PPR for inbd mil flts 100 NM on freq 130.5. B757, heavy and super acft are not auth int dep for any rwy unless a prior notice is clsd or unusable. All medical emerg arr, with the exception of air ambulance flts, must secure doors until ARFF is on scene. ASDE-X in use. Operate transponders with altitude reporting mode and ADS-B (if equipped) enabled on all airport surfaces. All diversion ctc frequency 130.5 upon arrival. Flight Notification Service (ADCUS) avbl. Ldg fee.

**AIRPORT MANAGER:** 305-876-7077

**WEATHER DATA SOURCES:** ASOS 119.15 (305) 870-0235. TDWR.

**COMMUNICATIONS:** D-ATIS ARR 119.15 (305) 869-5445 D-ATIS DEP 133.675 (305) 869-5446 UNICOM 123.0

Ⓡ APP CON 124.85 (270°-089°) 120.5 (090°-269°) 125.75 (270°-089°)

TOWER 118.3 (270°-089°) 123.9 (090°-269°) GND CON 121.8 (Rwy 8L, 8R, 12, 26L, 26R) 127.5 (Rwy 09, 27, 30)

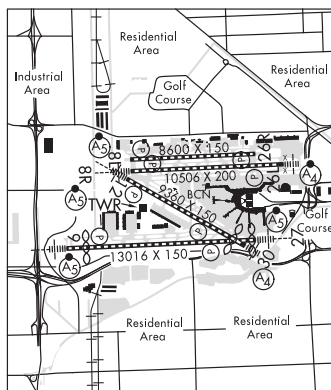
CLNC DEL 135.35 RAMP CTL 120.35

Ⓡ DEP CON 119.45 (270°-089°) 125.5 (090°-269°)

CPDLC (LOGON KUSA)

PDC

**AIRSPACE:** CLASS B See VFR Terminal Area Chart.



**CONTINUED ON NEXT PAGE**

CONTINUED FROM PRECEDING PAGE

RADIO AIDS TO NAVIGATION: NOTAM FILE MIA.

**DOLPHIN (H) VORTAC** 113.9 DHP Chan 86 N25°48.00' W80°20.94' 099° 3.2 NM to fld. 6/4W.

TACAN AZIMUTH unusable:  
055°-065° byd 35 NM blo 3,000'  
185°-195° byd 23 NM  
226°-236° byd 35 NM

DME unusable:  
055°-065° byd 35 NM blo 3,000'

**LOC/DME** 109.3 I-ROY Chan 30 Rwy 08L. ILS DME portion unusable byd 22° left of course (ctrln). LOC unusable byd 30° left of course and 25° right of course.

**ILS/DME** 110.3 I-MFA Chan 40 Rwy 08R. Class IT. DME unusable byd 23° right of course. LOC unusable byd 20° right of course.

**ILS/DME** 110.9 I-BUL Chan 46 Rwy 09. Class IA.

**ILS/DME** 108.9 I-GEM Chan 26 Rwy 12. Class IT. Glideslope unusable byd 5° right of course; byd 6° left of course.

**ILS/DME** 109.1 I-VIN Chan 28 Rwy 26L. Class IE.

**LOC/DME** 109.3 I-CNV Chan 30 Rwy 26R.

**ILS** 109.5 I-MIA Rwy 27. Class IT.

**ILS/DME** 111.7 I-DCX Chan 54 Rwy 30. Class IE.

**MIAMI—OPA LOCKA EXEC** (OPF)(KOPF) P (CG) 10 N UTC-5(-4DT) N25°54.45' W80°16.69'

**MIAMI**  
H-81, L-23C, A  
IAP, AD

8 B LRA NOTAM FILE OPF

**RWY 09L-27R:** H8002X150 (ASPH-GRVD) S-120, D-249, 2S-175, 2D-484, 2D/2D2-1000 PCN 61 F/A/W/T HIRL

**RWY 09L:** MALSR. VASI(V4L)—GA 3.0° TCH 56'. Trees.

**RWY 27R:** MALS. VASI(V4L)—GA 3.0° TCH 53'. Trees. Rgt tfc.

**RWY 12-30:** H6800X150 (ASPH-GRVD) S-120, D-249, 2D-484, 2D/2D2-1000 PCN 61 F/A/X/T HIRL

**RWY 12:** MALSR. PAPI(P4L)—GA 3.0° TCH 50'. Thld dsplcd 800'. Trees.

**RWY 30:** PAPI(P4L)—GA 3.0° TCH 50'. Tree.

**RWY 09R-27L:** H4309X100 (ASPH) S-96, D-154 PCN 36 F/A/Y/T MIRL

**RWY 09R:** VASI(V4L)—GA 3.0° TCH 26'. Pole. Rgt tfc.

**RWY 27L:** PAPI(P4L)—GA 3.0° TCH 50'. Trees.

**RUNWAY DECLARED DISTANCE INFORMATION**

**RWY 09L:**TORA-8002 TODA-8202 ASDA-8202 LDA-8002

**RWY 09R:**TORA-4306 TODA-4306 ASDA-4306 LDA-4306

**RWY 12:** TORA-6800 TODA-7800 ASDA-7000 LDA-6000

**RWY 27L:**TORA-4306 TODA-4306 ASDA-4306 LDA-4306

**RWY 27R:**TORA-8002 TODA-8202 ASDA-8202 LDA-8002

**RWY 30:** TORA-6800 TODA-7000 ASDA-7000 LDA-6800

**SERVICE:** S4 **FUEL** 100LL, JET A **OX** 1, 2, 3, 4 **LGT** When ATCT clsd ACTVT MALSR Rwy 12; PAPI Rwy 12 and 30; HIRL Rwy 12-30—CTAF. 30 min PPR to req actvn of MALSR Rwy 09L; MALS Rwy 27R; VASI Rwy 09L and 27R; HIRL Rwy 09L-27R—305-869-1660 and CTAF. **MILITARY—FUEL** J5 (PPR CG) A+ (C305-687-8410.) (NC-100LL, A) Contract fuel—305-685-4646. **FLUID** LHOX

**NOISE:** Noise sensitive arpt. Flt T is ltd to acct 40,000 lbs max gross tkof wt and blw & only btn 1200-0400Z±. Specific tfc pats are published for hel and fixed wing tfc; compliance is mandatory. Obtain info fm ATCT or FBO or amgr; or req specific tfc pat instructions on initial etc.

**AIRPORT REMARKS:** Attended continuously. Rwy 09L-27R when ATCT clsd PPR—305-869-1660. Birds invof arpt. Dual tfc pats for hel and fixed wing acct in use Rwy 09R-27L. Acft with wingspans grtr than 117' are prohibited fm txig on Twy P btn Twy H and Twy N8. Hel arr and dep avoid flying over parked or bxy acct. All acct and vehicles shud rprt pns to ATC by using the sfc painted spot nrs on all exits to the ramp and non-movement areas. Vehicle lane xing Twy E to the fire strn is non-movement. Twy C and B south of Twy P are non-movement areas. Twy T btn Twy E and Twy T8 rddcd spd rqrdr for acct wingspan more than 117'. Twy R btn Twy F and G rstrd to acct with wingspan less than 94'. Flt Notification Svc (ADCUS) avbl 1300-0400Z±.

**AIRPORT MANAGER:** 305-869-1662

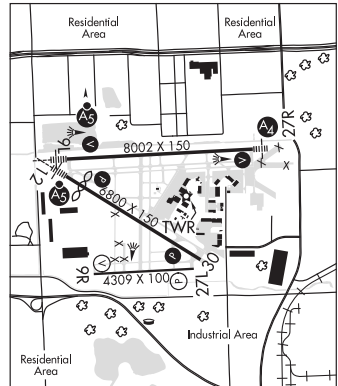
**WEATHER DATA SOURCES:** ASOS 125.9 (305) 681-4063. LAWRS.

**COMMUNICATIONS:** CTAF 134.675 ATIS 125.9

Ⓡ APP/DEP CON 128.6

**TOWER** 134.675 (1200-0400Z±) **GND CON** 120.025 **CLNC DEL** 119.2

**AIRSPACE:** CLASS D svc 1200-0400Z±; other times CLASS G.



CONTINUED ON NEXT PAGE