

PALM BEACH INTL (PBI)(KPBI) 3 W UTC-5(-4DT) N26°40.99' W80°05.74'

MIAMI
H-8I, L-23C
IAP, AD

20 B AOE LRA ARFF Index—See Remarks NOTAM FILE PBI

RWY 10L-28R: H10001X150 (ASPH-GRVD) S-120, D-175, 2S-175, 2D-550, 2D/2D2-840 PCN 93 F/B/W/T HIRL CL
RWY 10L: MALSR. PAPI(P4R)—GA 3.0° TCH 68'. RVR-TR Thld dspcd 1200'. Trees.

RWY 28R: REIL. PAPI(P4L)—GA 3.0° TCH 70'. RVR-TR Thld dspcd 811'. Trees.

RWY 14-32: H6931X150 (ASPH-GRVD) S-100, D-180, 2S-175, 2D-325, 2D/2D2-400 PCN 67 F/A/W/T MIRL

RWY 14: REIL. PAPI(P4R)—GA 3.0° TCH 66'. Trees.

RWY 32: REIL. PAPI(P4L)—GA 3.25° TCH 57'. Thld dspcd 418'. Road.

RWY 10R-28L: H3214X75 (ASPH) S-25 PCN 44 F/A/X/T MIRL

RWY 10R: REIL. Trees. Rgt tfc.

RWY 28L: REIL.

LAND AND HOLD—SHORT OPERATIONS

| LDG RWY | HOLD—SHORT POINT | AVBL LDG DIST |
|----------------|------------------|---------------|
| RWY 10L | 14-32 | 3117 |
| RWY 14 | 10L-28R | 4295 |
| RWY 28R | 14-32 | 3725 |

RUNWAY DECLARED DISTANCE INFORMATION

| |
|---|
| RWY 10L: TORA-10001 TODA-10001 ASDA-10001 LDA-8800 |
| RWY 10R: TORA-3214 TODA-3214 ASDA-3214 LDA-3214 |
| RWY 14: TORA-6926 TODA-6926 ASDA-6000 LDA-6000 |
| RWY 28L: TORA-3214 TODA-3214 ASDA-3214 LDA-3214 |
| RWY 28R: TORA-10001 TODA-10001 ASDA-10001 LDA-9189 |
| RWY 32: TORA-6926 TODA-6926 ASDA-6926 LDA-6513 |

ARRESTING GEAR/SYSTEM

RWY 14: EMAS

SERVICE: S4 FUEL 100LL, JET A OX 1, 2, 3, 4

NOISE:Noise abatement procedures in effect. Multiengine flight training prohibited SS to SR, Sun and hol, strict environmental operating Stage 2 acft 0300-1200Z; call noise abatement officer 561-471-7467.

AIRPORT REMARKS: Attended continuously. Migratory birds on and invof arpt. Class I ARFF Index C. Index D ARFF equipment avbl, 24 hr PPR. Rwy 10R-28L not avbl for sked acrops with more than 9 pax seats or unsked acr at least 31 pax seats. Be alert, Twy L is lctd btn Rwys 10L-28R and 10R-28L. Twy L is wider and longer than Rwy 10R-28L, do not confuse Twy L for rwy. Acft with wingspan of 118' or greater is prohibited on Twy L. 24 hr PPR for acft with wingspans greater than 171'. No acft will cross hold line without authorization. Be alert, Rwy 28L and Rwy 28R thlds staggered by 5400'. User fee. Flight Notification Service (ADCUS) avbl.

AIRPORT MANAGER: 561-471-7420

WEATHER DATA SOURCES: ASOS 123.75 (561) 683-2548. LLWAS. TDWR.

COMMUNICATIONS: D-ATIS 123.75 UNICOM 122.95

RCO 122.1R 115.7T (MIAMI RADIO)

RCO1 122.4

Ⓡ APP/DEP CON 128.3 125.2 (South)

TOWER 118.75 119.1 GND CON 121.9 CLNC DEL 121.6

PDC

AIRSPACE: CLASS C svc ctc APP CON.

RADIO AIDS TO NAVIGATION: NOTAM FILE PBI.

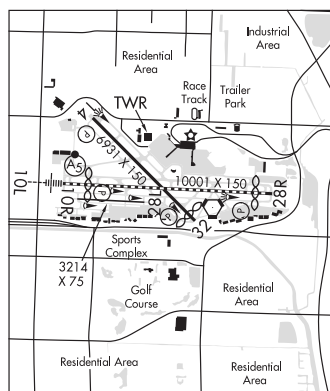
(H) VORTAC 115.7 PBI Chan 104 N26°40.80' W80°05.19' at fld. 16/3W.

VOR unusable:

185°-195° byd 13 NM

ILS/DME 111.9 I-PBI Chan 56 Rwy 10L. Class IT.

ILS 111.9 I-PWB Rwy 28R. Class IT.



WHITEHOUSE NOLF (NEN)(KNEN) TC N30°20.97' W81°52.02'

JACKSONVILLE

AIRSPACE: CLASS D svc ATCT manned during scheduled operations only; other times CLASS G.

H-8H, 12F, L-21D, 24G, A