

TULLAHOMA RGNL/WM NORTHERN FLD (THA)(KTHA) 2 NW UTC-6(-5DT) N35°22.80'

W86°14.78'

1084 B NOTAM FILE BNA

RWY 06-24: H5501X100 (ASPH-CONC) S-49, D-60 PCN 29 F/C/X/T MIRL

RWY 06: ODALS. REIL. PAPI(P2L)—GA 3.0° TCH 41'. Tree.

RWY 24: REIL. PAPI(P2L)—GA 3.0° TCH 33'. Thld dsplcd 500'. Tree.

RWY 18-36: H5002X100 (ASPH-CONC) S-37 MIRL

RWY 18: REIL. PAPI(P2L)—GA 2.95° TCH 34'. Tree.

RWY 36: REIL. PAPI(P2L)—GA 3.0° TCH 42'. Thld dsplcd 800'. Tree.

RWY 09-27: 2693X100 (TURF)

RWY 09: Tree. Rgt tfc.

RWY 27: Tree.

RWY N-S: 2100X100 (TURF)

RWY N: Tree.

RWY S: Tree.

SERVICE: S4 FUEL 100, JET A LGT ACTVT ODALS Rwy 06; PAPI Rwy 18 and 36; MIRL Rwy 18-36—CTAF. MIRL Rwy 06-24 preset to low intst; incr intst—CTAF. Rwy 36 PAPI unusable byd 7° rgt and left of cntrln.

AIRPORT REMARKS: Attended 1400-0000Z†. Geese and deer on and invof arpt. Glider act invof arpt. Rwy 09-27 field conc soft sfc when wet. Rwy 18-36 markings faded and peeling.

AIRPORT MANAGER: 931-455-3884

WEATHER DATA SOURCES: AWOS-3 128.325 (931) 454-2052.

COMMUNICATIONS: CTAF/UNICOM 123.0

MEMPHIS CENTER APP/DEP CON 128.15

CLEARANCE DELIVERY PHONE: For CD ctc Memphis ARTCC at 901-368-8453/8449.

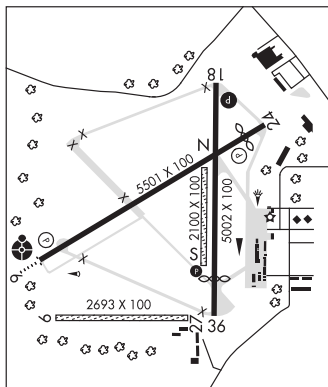
RADIO AIDS TO NAVIGATION: NOTAM FILE BNA.

SHELBYVILLE (L) VORW/DME 113.55 SYI Chan 82(Y) N35°33.72' W86°26.35' 140° 14.4 NM to fld. 814/10W.

DME unusable:

021°-045° byd 30 NM blo 4,500'

SDF 110.9 I-THA Rwy 18.



ATLANTA
H-6K, 9A, L-16J
IAP

UNION CITY

EVERETT-STEWART RGNL (UCY)(KUCY) 4 SE UTC-6(-5DT) N36°22.78' W88°59.14'

346 B NOTAM FILE MKL

RWY 01-19: H6503X100 (ASPH) S-45, D-60 PCN 3 F/D/X/T MIRL

0.6% up S

RWY 01: ODALS. REIL. PAPI(P4L)—GA 3.0° TCH 42'.

RWY 19: REIL. PAPI(P4L)—GA 3.0° TCH 29'. P-line.

SERVICE: S4 FUEL 100LL, JET A+ OX 1, 2, 3, 4 LGT ACTVT ODALS Rwy 01—CTAF. PAPI Rwy 01 and Rwy 19 H24.

AIRPORT REMARKS: Attended Apr-Oct Mon-Sat 1300-0000Z†, Sun 1830-2300Z†, Nov-Mar Mon-Sat 1330-2300Z†, Sun 1830-2300Z†. Aerobatic activity invof arpt. If sfc winds favor Rwy 01, rgt tfc for that rwy in effect when aerobatic area is active.

AIRPORT MANAGER: 731-885-1221

WEATHER DATA SOURCES: AWOS-3 135.325 (731) 885-9161.

COMMUNICATIONS: CTAF/UNICOM 122.7

Ⓡ MEMPHIS CENTER APP/DEP CON 133.65

CLEARANCE DELIVERY PHONE: For CD ctc Memphis ARTCC at 901-368-8453/8449.

RADIO AIDS TO NAVIGATION: NOTAM FILE DYR.

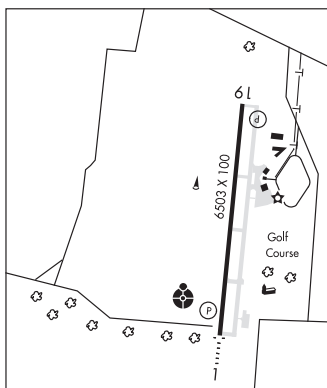
DYERSBURG (L) VORTACW 116.8 DYR Chan 115 N36°01.11'

W89°19.06' 034° 27.0 NM to fld. 389/3E.

OBION NDB (MHW/LOM) 212 UC N36°17.86'

W88°59.69' 005° 4.9 NM to fld. 310/OE. NOTAM FILE MKL. NDB unmonitored.

ILS 109.7 I-UCY Rwy 01. Class I E. LOM OBION NDB. LOC Monitored 1400-2300Z† at fbo.



ST LOUIS
H-6J, L-16H
IAP

UPPER CUMBERLAND RGNL (See SPARTA on page 429)

VOLUNTEER N35°54.29' W83°53.68' NOTAM FILE TYS.

(H) VORTACW 116.4 VXV Chan 111 224° 7.5 NM to Mc Ghee Tyson. 1316/3W.

ATLANTA
H-9B, 12G, L-25B