

VICTORVILLE

SOUTHERN CALIFORNIA LOGISTICS (VCV)(KVCV) 5 NW UTC-8(-7DT) N34°35.85'

LOS ANGELES
H-4H, L-4H, 7C
IAP, AD

W117°22.98'

2885 B ARFF Index—See Remarks NOTAM FILE VCV

RWY 17-35: H15050X150 (ASPH-CONC-GRVD) PCN 68 F/A/W/T

HIRL

RWY 17: REIL. PAPI(P4L)—GA 3.0° TCH 75'. RVR-T Rgt tfc. 0.5% up.

RWY 35: REIL. PAPI(P4L)—GA 3.0° TCH 65'. RVR-R 0.5% down.

RWY 03-21: H9138X150 (ASPH-CONC) PCN 76 F/B/X/T HIRL

RWY 03: PAPI(P4L)—GA 3.0° TCH 75'. Rgt tfc. 0.3% down.

RWY 21: PAPI(P4L)—GA 3.0° TCH 75'. 0.4% up.

RUNWAY DECLARED DISTANCE INFORMATION

RWY 03: TORA-9138 TODA-9138 ASDA-9138 LDA-9138

RWY 17: TORA-15050 TODA-15050 ASDA-15050 LDA-15050

RWY 21: TORA-9138 TODA-9138 ASDA-9138 LDA-9138

RWY 35: TORA-15050 TODA-15050 ASDA-15050 LDA-15050

SERVICE: S4 FUEL 100LL, JET A LGT When twr clsd ACTIVATE PAPI

Rwy 03, Rwy 21, Rwy 17 and Rwy 35, HIRL Rwy 03-21 and Rwy 17-35—CTAF.

NOISE: Avoid overflight of Silver Lakes 10 miles north for noise abatement.

AIRPORT REMARKS: Attended 1400-0600Z. For acct fuel or maintenance call 760-246-7794 or use frequency 131.975. Class IV, ARFF Index A. ARFF Index A, with ARFF Index E avbl with 24 hrs PPR; call OPS 760-243-1915. Portion of Twy A btn Twy C and Rwy 21, portion of Twy C btn Twys C1 and C2, portion of Twy E btn Twy E1 and Twy D, Rwy 17 thld, and Rwy 35 thld are not visible areas from the ATCT. VCV ATCT unable to provide ATC services to acct in these non-visible areas. Portion of Twy C btn Twy A and Twy B uncontrolled. Portion of Rwy 17 north 5000' are not visible areas from tower. Twy U not avbl for GA use or ACR use. Not lgtd. U.S. Customs User Fee Arpt. Customs officer avbl 1700-0100Z Mon-Fri 760-243-1925, after hrs call 760-490-8651.

AIRPORT MANAGER: 760-243-1915

WEATHER DATA SOURCES: AWOS-3 135.475 (760) 246-3635.

COMMUNICATIONS: CTAF 118.35 (0600-1400Z) ATIS: 135.475 (1400-0400Z)

① JOSHUA APP/DEP CON 124.55

VICTORVILLE TOWER 118.35 (1400-0400Z) GND CON 124.45.

CLEARANCE DELIVERY PHONE: When ATCT clsd, for CD ctc Joshua Apch at 661-277-3843.

AIRSPACE: CLASS D svc 1400-0400Z; other times CLASS G.

RADIO AIDS TO NAVIGATION: NOTAM FILE VCV.

VICTORVILLE (T) VOR/DME 109.05 VCV Chan 27(Y) N34°35.65' W117°23.40' at fld. 2855/14E.

VOR unusable:

040°-070° byd 15 NM

DME unusable:

040°-070° byd 15 NM

PALMDALE (H) VORTACW 114.5 PMD Chan 92 N34°37.88' W118°03.83' 078° 33.8 NM to fld.

2498/15E. NOTAM FILE PMD. unmonitored when ATCT clsd.

VOR unusable:

010°-020°

110°-160° byd 35 NM blo 11,600'

160°-235° byd 30 NM blo 8,100'

TACAN AZIMUTH unusable:

110°-145° byd 20 NM blo 15,500'

145°-235° byd 20 NM blo 14,500'

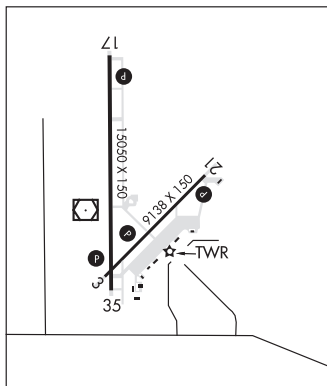
345°-355° byd 35 NM

DME unusable:

120°-145° byd 20 NM blo 15,500'

145°-150° byd 20 NM blo 14,500'

ILS 108.75 I-VCV Rwy 17. Class IE. LOC front course unusable byd 15° left and r of course.



VICTORVILLE N34°35.65' W117°23.40' NOTAM FILE VCV.
(T) VOR/DME 109.05 VCV Chan 27(Y) at Southern California Logistics. 2855/14E.

LOS ANGELES
L-4H, 7C

VOR unusable:

040°-070° byd 15 NM

DME unusable:

040°-070° byd 15 NM