

WAAS CH 72927 W36A	APP CRS 359°	Rwy Idg TDZE Apt Elev	5000 59 61
--	------------------------	-----------------------------	---------------------------------------

RNAV (GPS) RWY 36

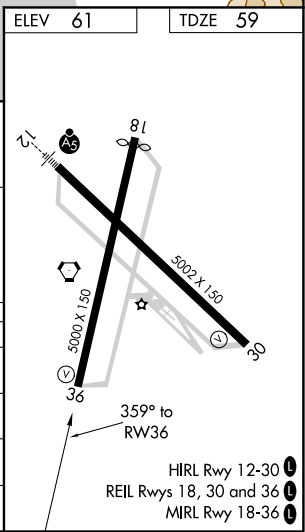
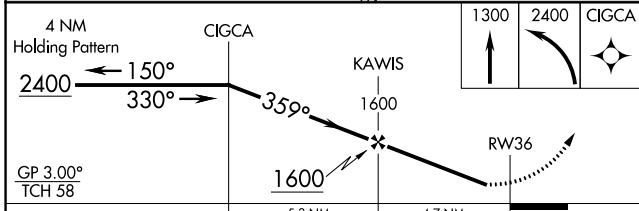
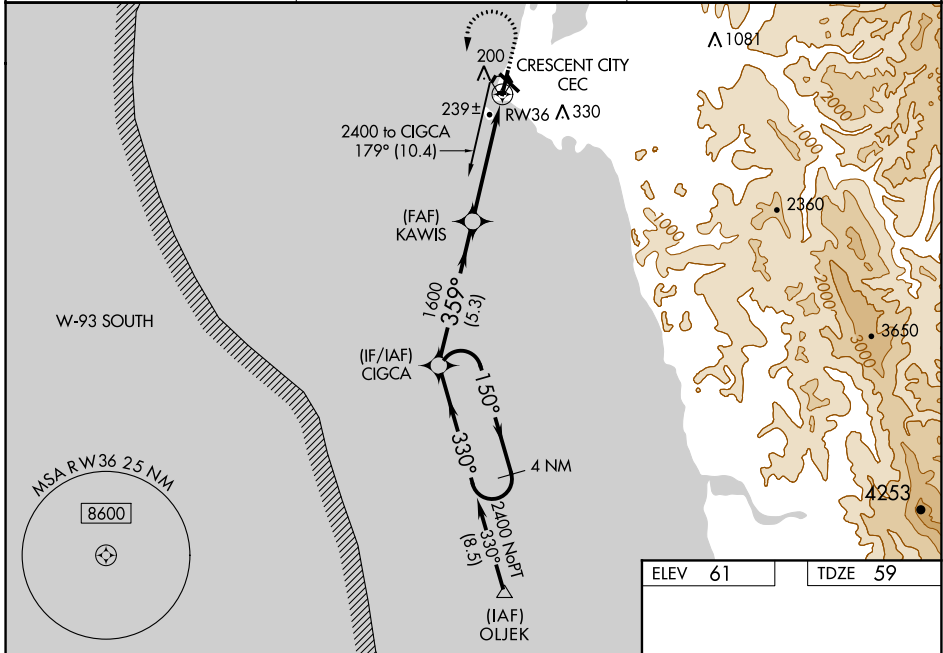
JACK MC NAMARA FIELD (CEC)

RNP APCH.

▼ Baro-VNAV NA when using Brookings altimeter setting. For uncompensated Baro-VNAV systems, LNAV/VNAV NA below -15°C or above 54°C. When local altimeter setting not received, use Brookings altimeter setting and increase LPV DA to 406 and LNAV/VNAV DA to 505 and all MDA 100 feet; increase LPV all Cats and LNAV Cat C/D and Circling Cat D visibilities ¼ SM, increase LNAV/VNAV all Cats visibility ⅜ SM, and Circling Cat C visibility ½ SM. Rwy 36 helicopter visibility reduction below 1 SM NA. Straight-In Rwy 36 at night, operational VGSI required, remain on or above VGSI glidepath until threshold. Circling Rwy 18, 30 NA at night.

MISSED APPROACH: Climb to 1300 then climbing left turn to 2400 direct CIGCA and hold.

ASOS 119.925	SEATTLE CENTER 124.85 306.3	UNICOM 122.8 (CTAF) 0
------------------------	---------------------------------------	---------------------------------



CATEGORY	A	B	C	D
LPV DA	309-1		250 (300-1)	
LNAV/VNAV DA	408-1½		349 (400-1½)	
LNAV MDA	500-1	441 (500-1)	500-1¾	441 (500-1¾)
C CIRCLING	540-1	479 (500-1)	640-1½ 579 (600-1½)	640-2 579 (600-2)

HIRL Rwy 12-30
REIL Rws 18, 30 and 36
MIRL Rwy 18-36

SW-2, 15 JUL 2021 to 12 AUG 2021

SW-2, 15 JUL 2021 to 12 AUG 2021