

MARIC FOUR DEPARTURE

AL-36 (FAA)

MEADOWS FLD (BFL)
BAKERSFIELD, CALIFORNIA

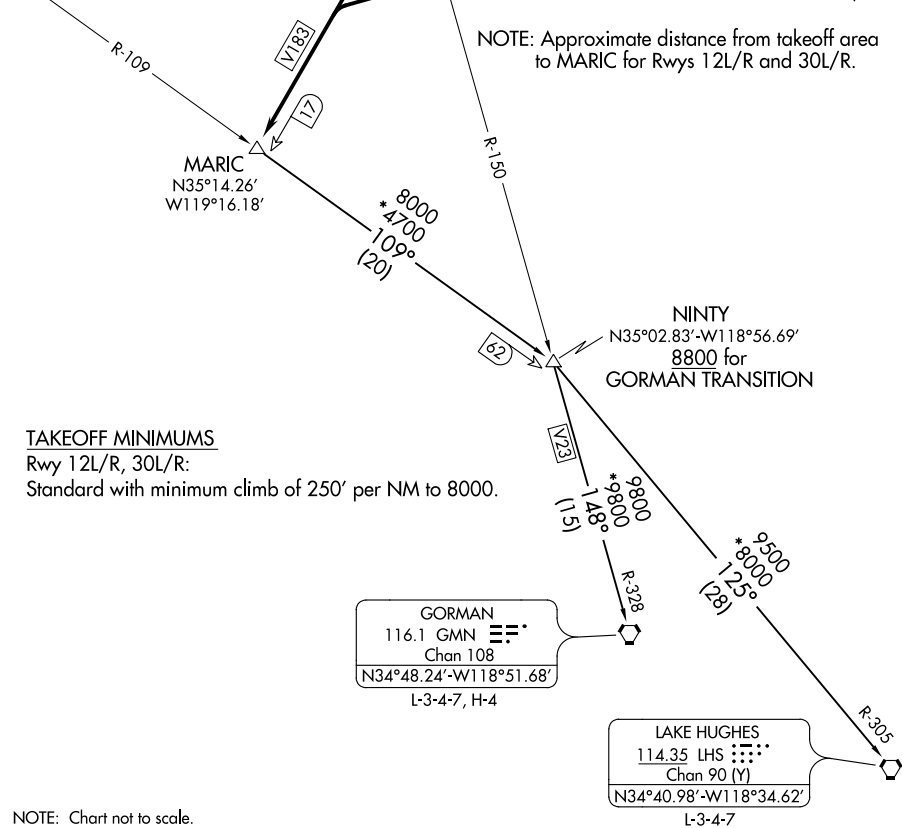
**TOP ALTITUDE:
ASSIGNED BY ATC**

AVENAL
117.1 AVE :--
Chan 118

R-196
SHAFTER
115.4 EHF :--
Chan 101

ATIS 118.6
GND CON 121.7
BAKERSFIELD TOWER* 118.1 257.8
BAKERSFIELD DEP CON* 126.45 270.3 (NORTH)
126.45 284.625 (SOUTH)

NOTE: Approximate distance from takeoff area to MARIC for Rwy 12L/R and 30L/R.



TAKEOFF MINIMUMS

Rwy 12L/R, 30L/R:

Standard with minimum climb of 250' per NM to 8000.

NOTE: Chart not to scale.

DEPARTURE ROUTE DESCRIPTION

TAKEOFF RUNWAYS 12L/R: Turn right heading 240°. Thence. . .

TAKEOFF RUNWAYS 30L/R: Turn left heading 240°. Thence. . .

. . . intercept and proceed on the EHF R-196 to MARIC. Thence via (transition) or (assigned route).

GORMAN TRANSITION (MARIC4.GMN): From over MARIC via AVE R-109 and GMN R-328 to GMN VORTAC.

LAKE HUGHES TRANSITION (MARIC4.LHS): From over MARIC via AVE R-109 and LHS R-305 to LHS VORTAC.

MARIC FOUR DEPARTURE

SW-3, 15 JUL 2021 to 12 AUG 2021

SW-3, 15 JUL 2021 to 12 AUG 2021