

MEADOWS FOUR DEPARTURE

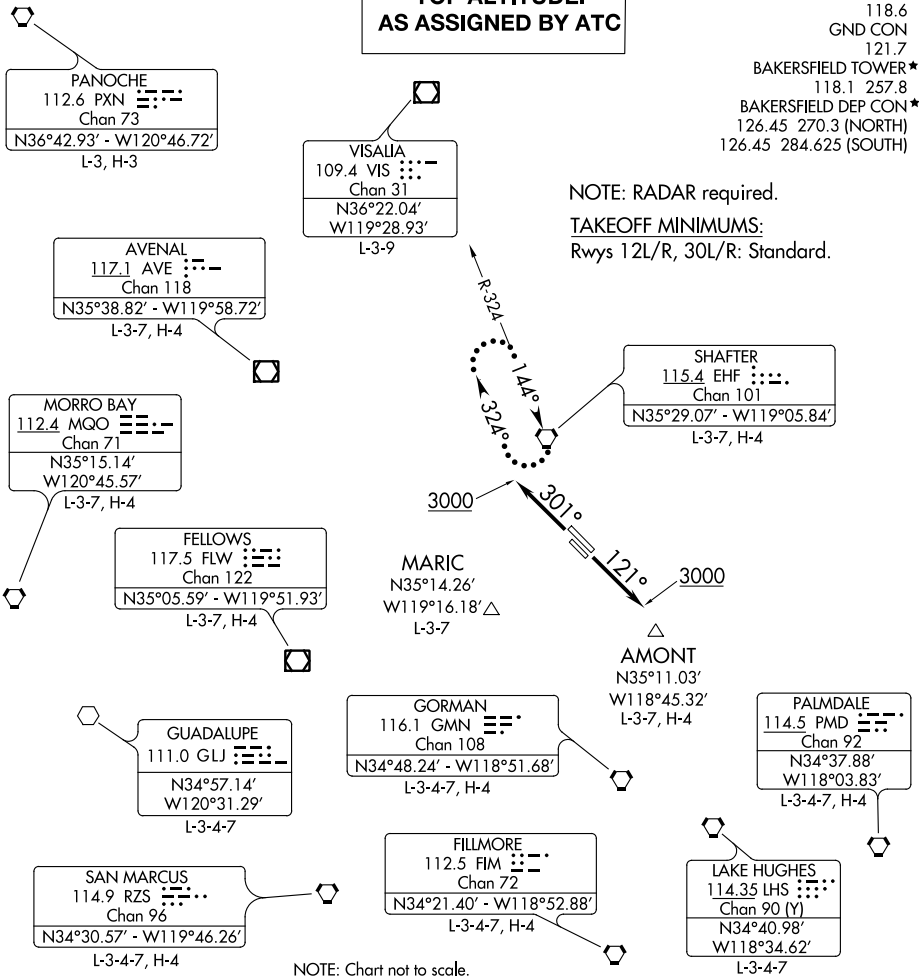
AL-36 (FAA)

MEADOWS FLD (BFL)
BAKERSFIELD, CALIFORNIA

**TOP ALTITUDE:
AS ASSIGNED BY ATC**

ATIS
118.6
GND CON
121.7
BAKERSFIELD TOWER*
118.1 257.8
BAKERSFIELD DEP CON*
126.45 270.3 (NORTH)
126.45 284.625 (SOUTH)

NOTE: RADAR required.
TAKEOFF MINIMUMS:
Rwys 12L/R, 30L/R: Standard.



SW-3, 15 JUL 2021 to 12 AUG 2021

SW-3, 15 JUL 2021 to 12 AUG 2021



DEPARTURE ROUTE DESCRIPTION

TAKEOFF RUNWAYS 12L/R: Climb heading 121° to 3000 for vector to assigned route/fix. Thence. . . .

TAKEOFF RUNWAYS 30L/R: Climb heading 301° to 3000 for vector to assigned route/fix. Thence. . . .

. . . .Thence, maintain ATC assigned altitude. Expect clearance to requested altitude five minutes after departure.

LOST COMMUNICATIONS: If no radio contact for two minutes, proceed direct SHAFTER VORTAC and hold. Climb in holding pattern to expected altitude prior to proceeding on course.

MEADOWS FOUR DEPARTURE

BAKERSFIELD, CALIFORNIA
MEADOWS FLD (BFL)