

WAAS CH 82440 W30B	APP CRS 301°	Rwy Idg TDZE Apt Elev	6201 484 510
--	------------------------	-----------------------------	---

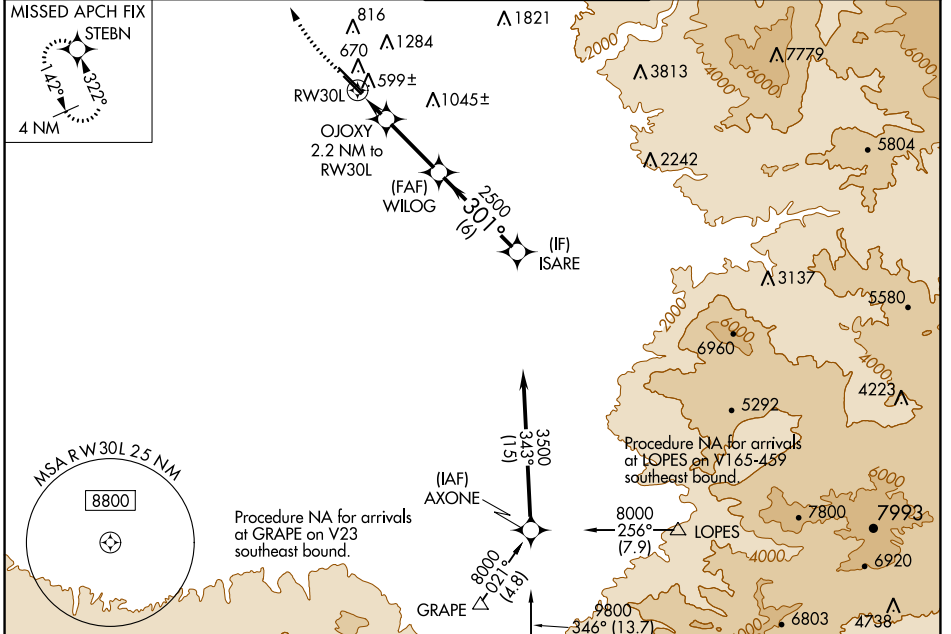
RNAV (GPS) RWY 30L

MEADOWS FLD (BFL)

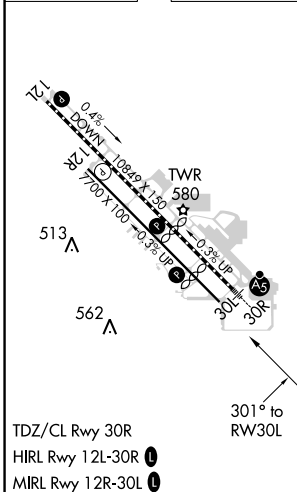
⚠ For uncompensated Baro-VNAV systems, LNAV/VNAV NA below -1°C (31°F) or above 54°C (130°F). Circling NA northeast of Rwy 12L-30R.
DME/DME RNP-0.3 NA.

MISSED APPROACH: Climb to 1000 then climbing right turn to 3000 direct STEBN and hold.

ATIS 118.6	BAKERSFIELD APP CON ★ 118.8 284.625 118.9 270.3 (SOUTH) (NORTH)	BAKERSFIELD TOWER ★ 118.1 (CTAF) 257.8	GND CON 121.7	UNICOM 122.95
----------------------	--	--	-------------------------	-------------------------



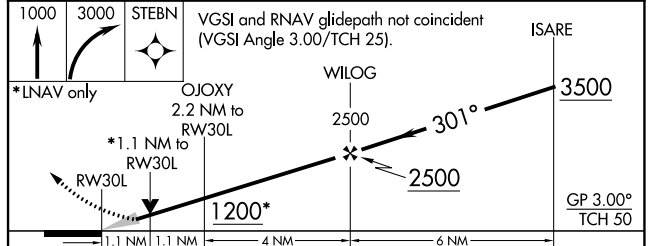
ELEV 510	D	TDZE 484
----------	----------	----------



Procedure NA for arrival at GRAPE on V23 southeast bound.

Procedure NA for arrivals at LOPES on W165-459 southeast bound.

Procedure NA for arrival at GMN VORTAC on V328 radials 297 CW 328.



CATEGORY	A	B	C	D
LPV DA		734-7/8	250 (300-7/8)	
LNAV/VNAV DA		797-1 1/8	313 (300-1 1/8)	
LNAV MDA		860-1	376 (400-1)	
C CIRCLING	960-1	450 (500-1)	960-1 1/2 450 (500-1 1/2)	1060-2 550 (600-2)

SW-3, 15 JUL 2021 to 12 AUG 2021

SW-3, 15 JUL 2021 to 12 AUG 2021