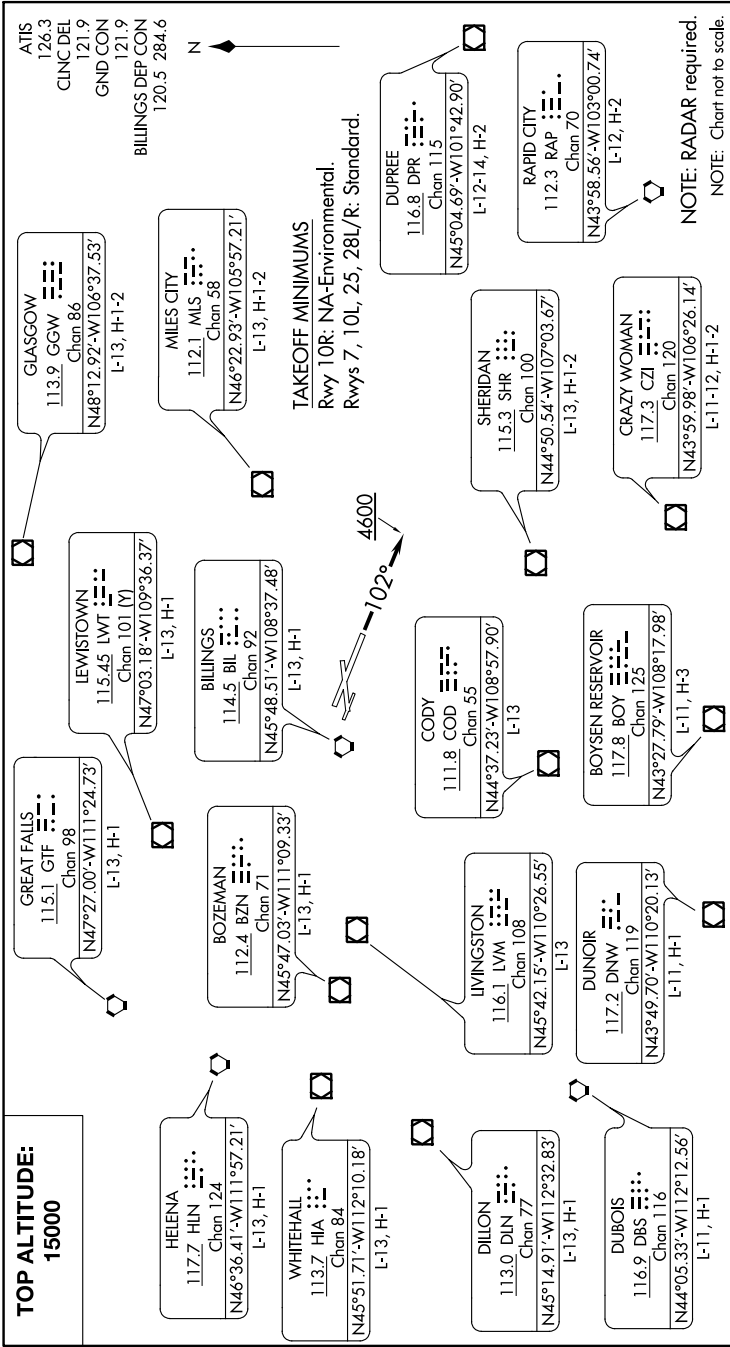


# BILLINGS FIVE DEPARTURE

AL-48 (FAA)

BILLINGS LOGAN INTL (BIL)  
BILLINGS, MONTANA

1200GVAU20210115JUL202111MN



**DEPARTURE ROUTE DESCRIPTION**

**TAKEOFF RUNWAYS 7, 25, 28L/R:** Climb on assigned heading for vectors to assigned fix/route, thence, . . . .

**TAKEOFF RUNWAY 10L:** Climb heading 102° to 4600, then on assigned heading for vectors to assigned fix/route, thence, . . . .

. . . . maintain 15000 or assigned lower altitude. Expect clearance to filed altitude/flight level five minutes after departure.

**LOST COMMUNICATIONS:** If no transmissions are received for 1 minute after departure, fly last assigned heading until reaching 7000. Proceed direct BIL VORTAC, then on last routing cleared and climb to filed altitude.

**NOTE:** Chart not to scale.

# BILLINGS FIVE DEPARTURE

BILLINGS, MONTANA  
BILLINGS LOGAN INTL (BIL)

NW-1, 15 JUL 2021 to 12 AUG 2021