

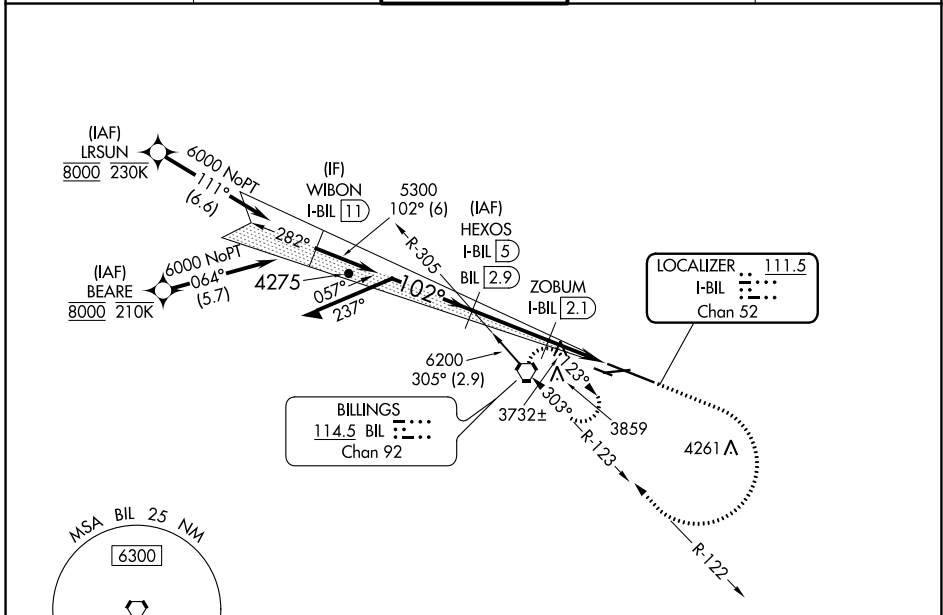
LOC/DME I-BIL 111.5 Chan 52	APP CRS 102°	Rwy Idg 10518 TDZE 3585 Apt Elev 3662
---	------------------------	--

ILS Y or LOC Y RWY 10L

BILLINGS LOGAN INTL (BIL)

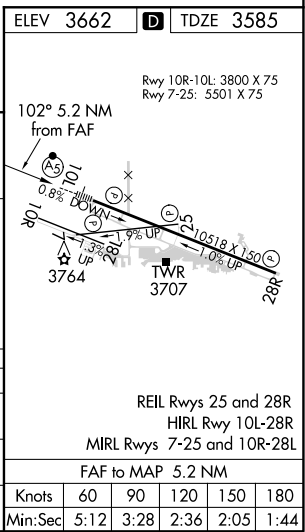
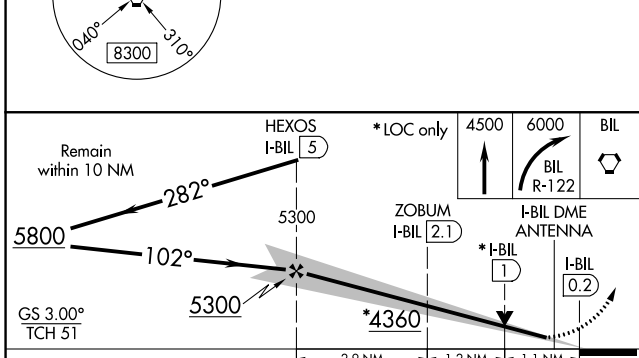
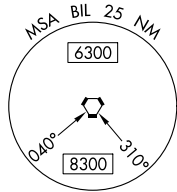
DME required. From BEARE, LRSUN: RNAV 1-GPS required.	MALSR 	MISSED APPROACH: Climb to 4500 then climbing right turn to 6000 on BIL VORTAC R-122 to BIL VORTAC and hold.
For inop ALS, increase S-LOC 10L Cat C/D visibility to RVR 6000. # RVR 1800 authorized with use of FD or AP or HUD to DA.		

ATIS 126.3	BILLINGS APP CON 120.5 284.6	BILLINGS TOWER 127.2 257.8	GND CON 121.9	CLNC DEL 121.9
----------------------	--	--------------------------------------	-------------------------	--------------------------



NW-1, 15 JUL 2021 to 12 AUG 2021

NW-1, 15 JUL 2021 to 12 AUG 2021



CATEGORY	A	B	C	D
S-ILS 10L #	3785/24 200 (200-½)			
S-LOC 10L	4000/24	415 (400-½)	4000/40	415 (400-¾)
CIRCLING	4100-1 438 (500-1)	4160-1 498 (500-1)	4180-1½ 518 (600-½)	4580-3 918 (1000-3)

REIL Rwys 25 and 28R HIRL Rwy 10L-28R MIRL Rwys 7-25 and 10R-28L					
FAF to MAP 5.2 NM					
Knots	60	90	120	150	180
Min:Sec	5:12	3:28	2:36	2:05	1:44