

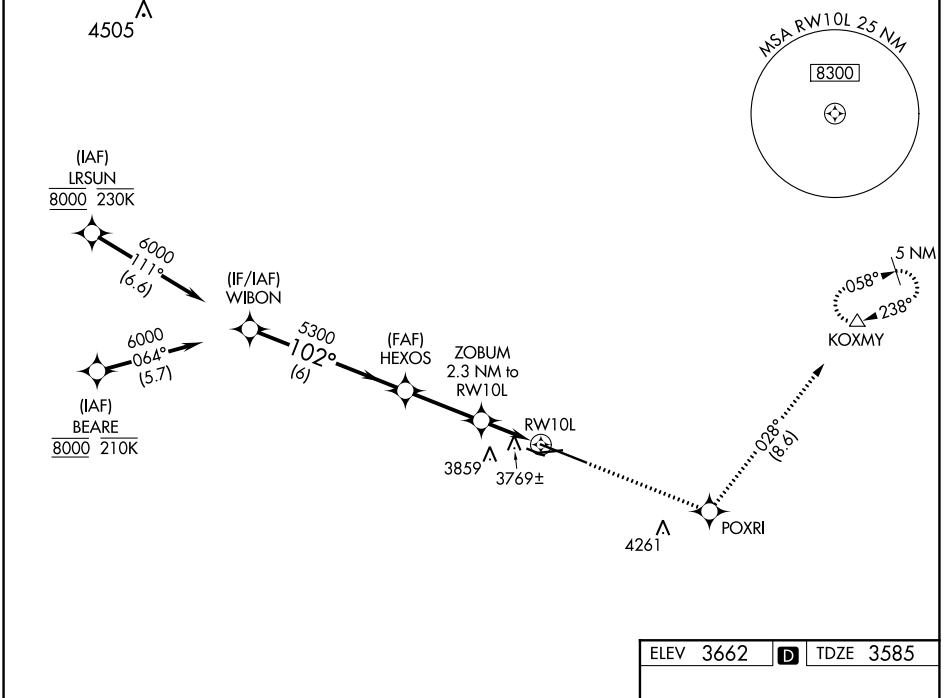
WAAS CH 50122 W10A	APP CRS 102°	Rwy Idg 10518 TDZE 3585 Apt Elev 3662
--	------------------------	--

RNAV (GPS) RWY 10L

BILLINGS LOGAN INTL (BIL)

RNP APCH - GPS		MALSR	MISSED APPROACH: Climb to 6000 direct POXRI and on track 028° to KOXMY and hold.
<p>V For uncompensated Baro-VNAV systems, LNAV/VNAV NA below -24°C or above 50°C. #RVR 1800 authorized with use of FD or AP or HUD to DA.</p>			

ATIS 126.3	BILLINGS APP CON 120.5 284.6	BILLINGS TOWER 127.2 257.8	GND CON 121.9	CLNC DEL 121.9
----------------------	--	--------------------------------------	-------------------------	--------------------------



NW-1, 15 JUL 2021 to 12 AUG 2021

NW-1, 15 JUL 2021 to 12 AUG 2021

ELEV 3662	D TDZE 3585
-----------	--------------------

	WIBON	HEXOS	ZOBUM 2.3 NM to RW10L	RW10L	KOXMY
	6000	5300	4360	3769±	
	102°	102°	102°	102°	028°
	6 NM	2.9 NM	1 NM	1.3 NM	
GP 3.00° TCH 51					
CATEGORY	A	B	C	D	
LPV DA#		3785/24	200 (200-½)		
LNAV/VNAV DA		4041/60	456 (400-1¼)		
LNAV MDA	4020/24	435 (400-½)	4020/40	435 (400-¾)	
C CIRCLING	4100-1 438 (500-1)	4160-1 498 (500-1)	4180-1½ 518 (600-1½)	4580-3 918 (1000-3)	

