

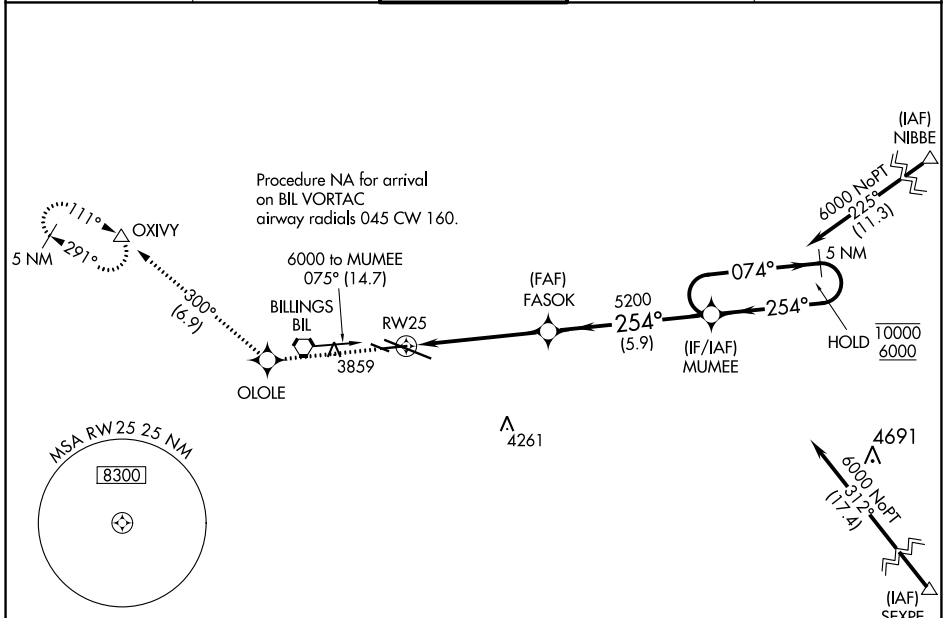
WAAS CH 78028 W25A	APP CRS 254°	Rwy Idg TDZE Apt Elev	5501 3586 3662
---------------------------------	------------------------	-----------------------------	-------------------------------------------

RNAV (GPS) RWY 25

BILLINGS LOGAN INTL (BIL)

RNP APCH - GPS.		MISSED APPROACH: Climb to 6000 direct OLOE and on track 300° to OXIVY and hold.		
<p>▼ ▲ For uncompensated Baro-VNAV systems, LNAV/VNAV NA below -25°C or above 54°C.</p>				

ATIS 126.3	BILLINGS APP CON 120.5 284.6	BILLINGS TOWER 127.2 257.8	GND CON 121.9	CLNC DEL 121.9
----------------------	----------------------------------------	--------------------------------------	-------------------------	--------------------------



NW-1, 15 JUL 2021 to 12 AUG 2021

NW-1, 15 JUL 2021 to 12 AUG 2021

ELEV 3662	D	TDZE 3586
-----------	----------	-----------

Rwy 10R-10L: 3800 X 75
Rwy 7-25: 5501 X 75

REIL Rwy 25 and 28R
HIRL Rwy 10L-28R
MIRL Rwy 7-25 and 10R-28L

6000	OLOE	tr 300°	OXIVY	MUMEE	5 NM Holding Pattern
				10000	6000
				GP 3.00°	TCH 36
1.2	3.9 NM	5.9 NM			
CATEGORY	A	B	C	D	
LPV DA	3836-1		250 (200-1)		
LNAV/VNAV DA	3920-1 $\frac{3}{8}$		334 (300-1 $\frac{3}{8}$)		
LNAV MDA	3960-1		374 (300-1)		
C CIRCLING	4100-1 438 (500-1)	4160-1 498 (500-1)	4180-1 $\frac{1}{2}$ 518 (600-1 $\frac{1}{2}$)	4580-3 918 (1000-3)	