

RNAV (RNP) Z RWY 28R

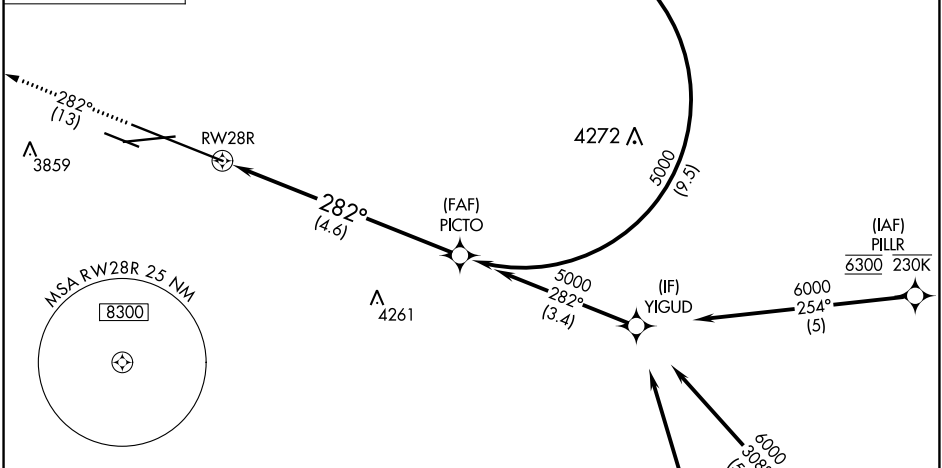
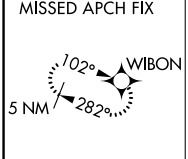
BILLINGS LOGAN INTL (BIL)

APP CRS **282°**
Rwy Idg **10518**
TDZE **3517**
Apt Elev **3662**

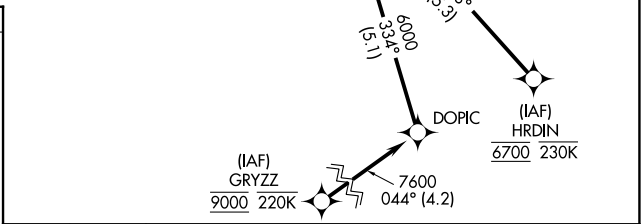
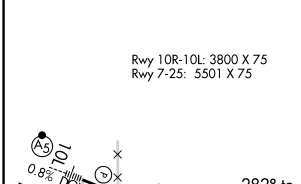
RNP AR APCH-GPS
For uncompensated Baro-VNAV systems, procedure NA below -24°C or above 50°C.

MISSED APPROACH: Climb to 5900 on track 282° to WIBON and hold.

ATIS 126.3	BILLINGS APP CON 120.5 284.6	BILLINGS TOWER 127.2 257.8	GND CON 121.9	CLNC DEL 121.9
----------------------	--	--------------------------------------	-------------------------	--------------------------

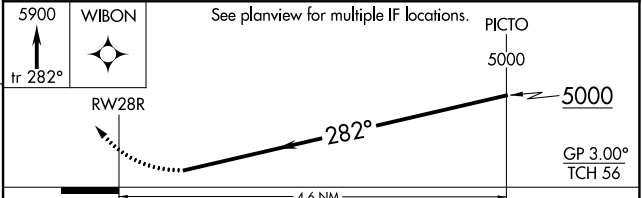


ELEV **3662** TDZE **3517**



Rwy 10R-10L: 3800 X 75
Rwy 7-25: 5501 X 75

REIL Rwy 25 and 28R
HIRL Rwy 10L-28R
MIRL Rwy 7-25 and 10R-28L



CATEGORY	A	B	C	D
RNP 0.30 DA	3903-1¼ 386 (300-1¼)			

AUTHORIZATION REQUIRED

NW-1, 15 JUL 2021 to 12 AUG 2021

NW-1, 15 JUL 2021 to 12 AUG 2021