

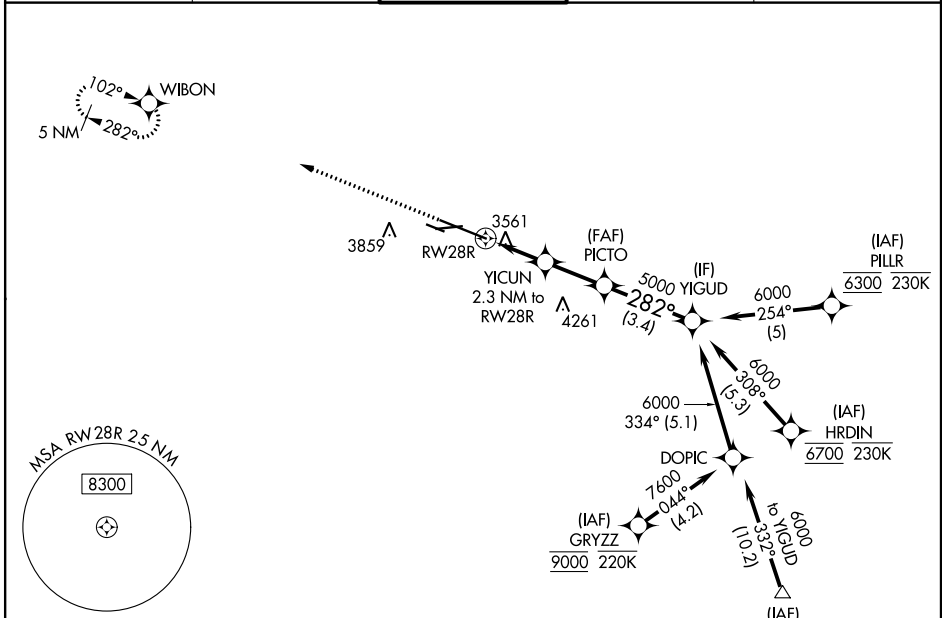
WAAS CH <b>56222</b> W28A	APP CRS <b>282°</b>	Rwy Idg <b>10518</b> TDZE <b>3517</b> Apt Elev <b>3662</b>
---------------------------------	------------------------	--

# RNAV (GPS) Y RWY 28R

BILLINGS LOGAN INTL (BIL)

RNP APCH - GPS.		MISSED APPROACH: Climb to 5900 direct WIBON and hold.		
<p><b>▼</b> Rwy 28R helicopter visibility reduction below 3/4 SM NA.</p> <p><b>▲</b> For uncompensated Baro-VNAV systems, LNAV/VNAV NA below -24°C or above 50°C.</p>				

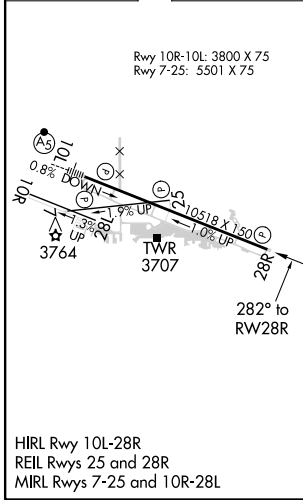
ATIS <b>126.3</b>	BILLINGS APP CON <b>120.5 284.6</b>	BILLINGS TOWER <b>127.2 257.8</b>	GND CON <b>121.9</b>	CLNC DEL <b>121.9</b>
----------------------	--	--------------------------------------	-------------------------	--------------------------



NW-1, 15 JUL 2021 to 12 AUG 2021

NW-1, 15 JUL 2021 to 12 AUG 2021

ELEV 3662	<b>D</b>	TDZE 3517
-----------	----------	-----------



<p><b>▲ 5155</b></p> <p>5900 WIBON</p> <p>YICUN 2.3 NM to RWY 28R</p> <p>PICTO 5000</p> <p>YIGUD 6000</p> <p>GP 3.00° TCH 56</p>				
<p>0.9 NM RWY 28R</p> <p>0.9 NM RWY 28R</p> <p>1.4 NM</p> <p>2.3 NM</p> <p>3.4 NM</p>				
CATEGORY	A	B	C	D
LPV DA		3767-3/4	250 (200-3/4)	
LNAV/VNAV DA		3786-7/8	269 (200-7/8)	
LNAV MDA		3820-1	303 (200-1)	
<b>C</b> CIRCLING	4100-1 438 (500-1)	4160-1 498 (500-1)	4180-1 1/2 518 (600-1 1/2)	4580-3 918 (1000-3)