

BLZZR FOUR DEPARTURE (RNAV)

AL-58 (FAA)

BOSTON, MASSACHUSETTS

NE-1, 15 JUL 2021 to 12 AUG 2021

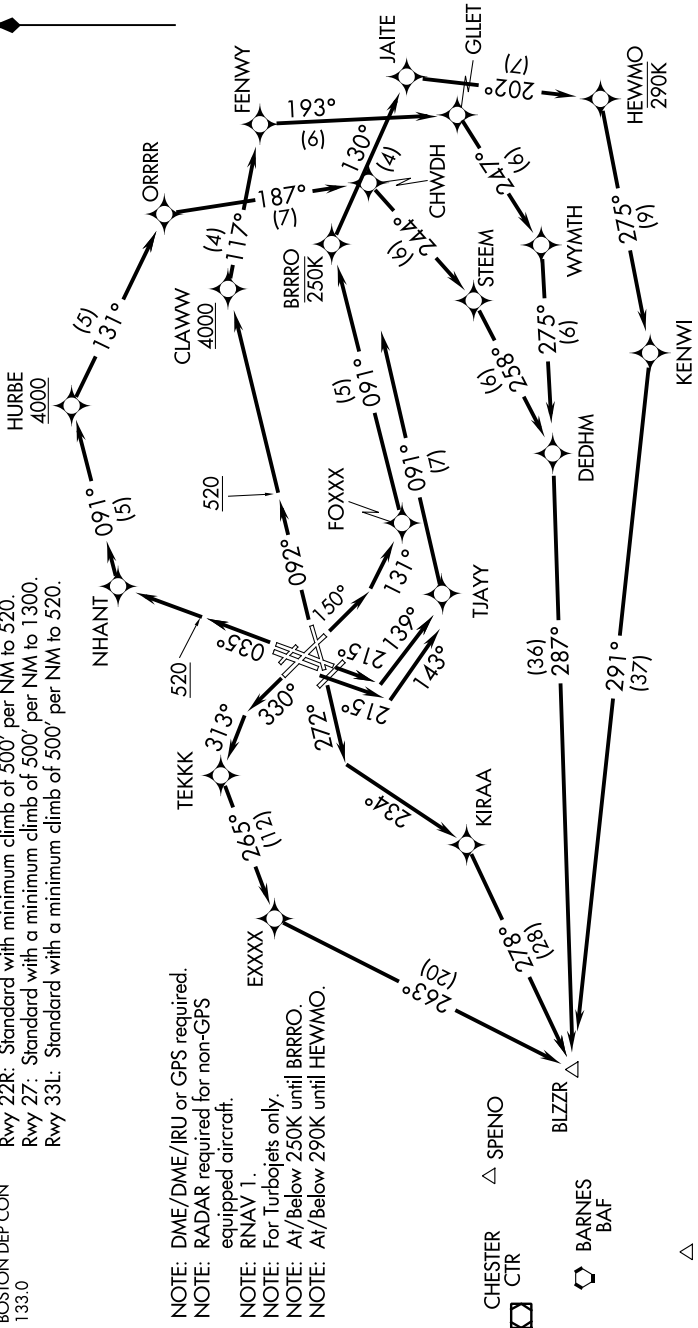
D-ATIS
135.0
CLNC DEL
121.65 257.8
CPDLC
GND CON
121.9 121.75
BOSTON TOWER
128.8 257.8 (WEST)
132.225 257.8 (EAST)
BOSTON DEP CON
133.0

TAKEOFF MINIMUMS:

- Rwys 4L, 14, 15L, 32, 33R: NA-ATC.
- Rwy 4R: Standard with minimum climb of 500' per NM to 3600.
- Rwy 9: Standard with minimum climb of 500' per NM to 4000.
- Rwy 15R: Standard with minimum climb of 500' per NM to 520.
- Rwy 22L: 300-1 with minimum climb of 500' per NM to 520, or standard with minimum climb of 500' per NM to 520 if tower reports no tall vessels in the departure area.
- Rwy 22R: Standard with minimum climb of 500' per NM to 520.
- Rwy 27: Standard with a minimum climb of 500' per NM to 1300.
- Rwy 33L: Standard with a minimum climb of 500' per NM to 520.

NOTE: Departure hdg/RNAV tracks/vectors are predicated on avoiding noise sensitive areas. Flight crew awareness and compliance is important in minimizing noise impacts on surrounding communities. Rwy 15R, 22L, 22R: Do not exceed 210K until 520' MSL.

TOP ALTITUDE:
5000



NOTE: Chart not to scale.

(NARRATIVE ON FOLLOWING PAGE)

NE-1, 15 JUL 2021 to 12 AUG 2021

BLZZR FOUR DEPARTURE (RNAV)

(BLZZR4.BLZZR) 12OCT17

BOSTON, MASSACHUSETTS

GENERAL EDWARD LAWRENCE LOGAN INTL (BOS)