

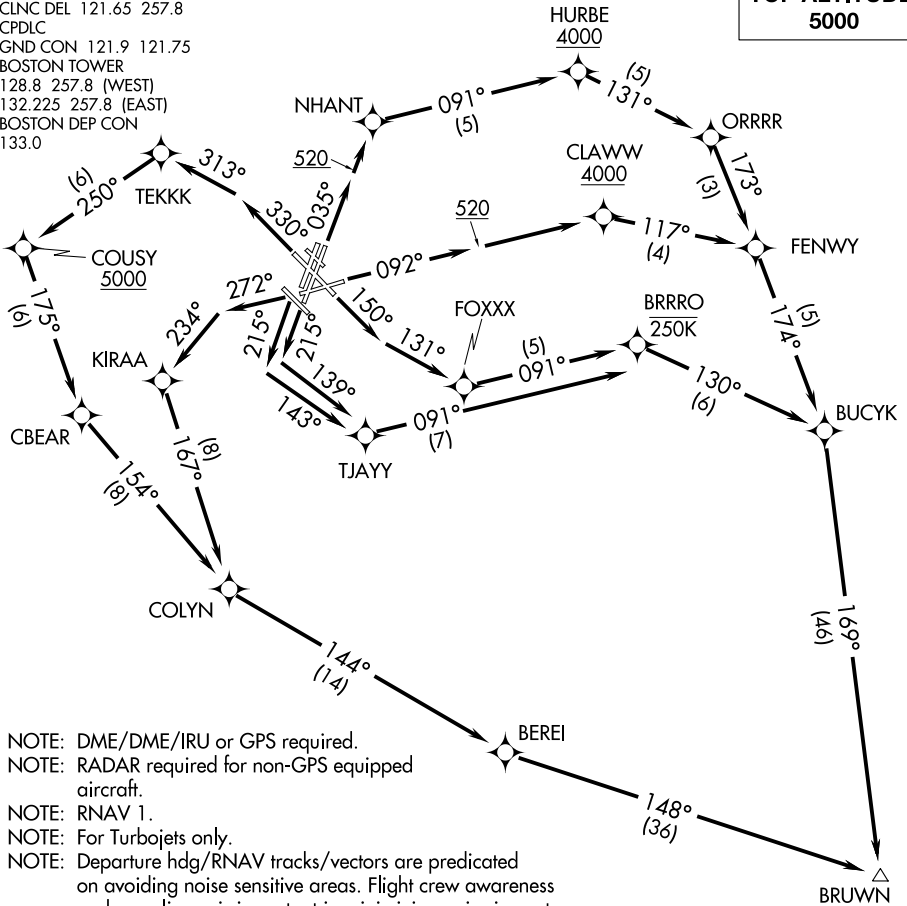
BRUWN FIVE DEPARTURE (RNAV)

AL-58 (FAA)

BOSTON, MASSACHUSETTS

D-ATIS 135.0  
CLNC DEL 121.65 257.8  
CPDLC  
GND CON 121.9 121.75  
BOSTON TOWER  
128.8 257.8 (WEST)  
132.225 257.8 (EAST)  
BOSTON DEP CON  
133.0

**TOP ALTITUDE:  
5000**



- NOTE: DME/DME/IRU or GPS required.
- NOTE: RADAR required for non-GPS equipped aircraft.
- NOTE: RNAV 1.
- NOTE: For Turbojets only.
- NOTE: Departure hdg/RNAV tracks/vectors are predicated on avoiding noise sensitive areas. Flight crew awareness and compliance is important in minimizing noise impacts on surrounding communities.
- NOTE: Rwy 15R, 22L, 22R: Do not exceed 210K until 520' MSL.
- NOTE: At/Below 250K until BRRRO.

TAKEOFF MINIMUMS:

- Rwys 4L, 14, 15L, 32, 33R: NA-ATC.
- Rwy 4R: Standard with minimum climb of 500' per NM to 3600.
- Rwy 9: Standard with minimum climb of 500' per NM to 4000.
- Rwy 15R: Standard with minimum climb of 500' per NM to 520.
- Rwy 22L: 300-1 with minimum climb of 500' per NM to 520, or standard with minimum climb of 500' per NM to 520 if tower reports no tall vessels in the departure area.
- Rwy 22R: Standard with minimum climb of 500' per NM to 520.
- Rwy 27: Standard with a minimum climb of 500' per NM to 1300.
- Rwy 33L: Standard with a minimum climb of 500' per NM to 4900.

NANTUCKET  
ACK

(NARRATIVE ON FOLLOWING PAGE)

NOTE: Chart not to scale.

BRUWN FIVE DEPARTURE (RNAV)

BOSTON, MASSACHUSETTS

NE-1, 15 JUL 2021 to 12 AUG 2021

NE-1, 15 JUL 2021 to 12 AUG 2021