

LOC/DME I-LIP	APP CRS	Rwy Idg	10083
110.7	330°	TDZE	16
Chan 44		Apt Elev	19

ILS RWY 33L (CAT II & III)

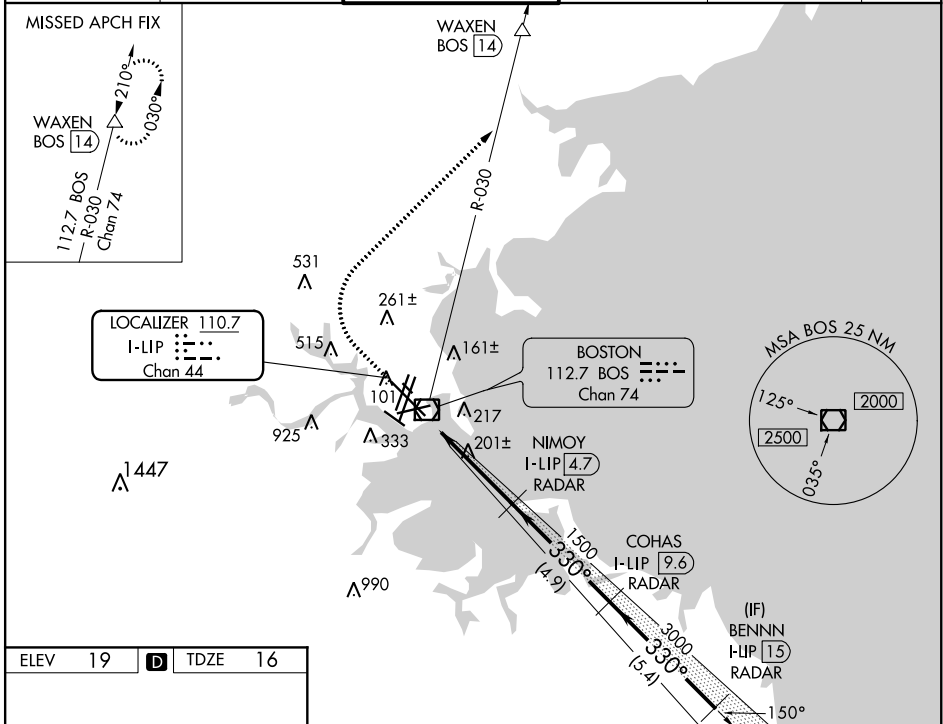
GENERAL EDWARD LAWRENCE LOGAN INTL (BOS)

RADAR required for procedure entry, DME.

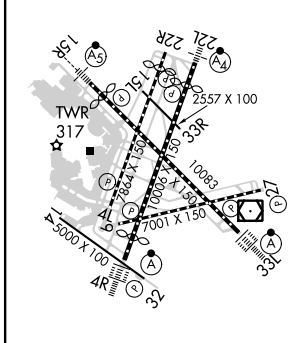
ALSF-2

MISSED APPROACH: Climb to 1500 then climbing right turn to 3000 on BOS VOR/DME R-030 to WAXEN/BOS 14 DME and hold.

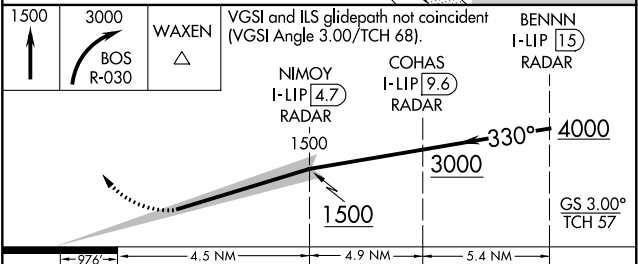
D-ATIS	BOSTON APP CON	BOSTON TOWER	GND CON	CLNC DEL	CPDLC
135.0	120.6 263.1	128.8 257.8 (WEST) 132.225 257.8 (EAST)	121.9 121.75	121.65 257.8	



ELEV 19	D	TDZE 16
---------	----------	---------



TDZ/CL Rwy 4R, 15R and 33L
 REIL Rwy 4L, 27 and 32
 MIRL Rwy 15L-33R
 HIRL Rwy 4L-22R, 4R-22L,
 9-27, 14-32 and 15R-33L



CATEGORY	A	B	C	D
S-ILS 33L	CAT II RA 116/12 100 DA 116			
S-ILS 33L	CAT III RVR 06			

CATEGORY II & III ILS - SPECIAL AIRCREW & AIRCRAFT CERTIFICATION REQUIRED

NE-1, 15 JUL 2021 to 12 AUG 2021

NE-1, 15 JUL 2021 to 12 AUG 2021