

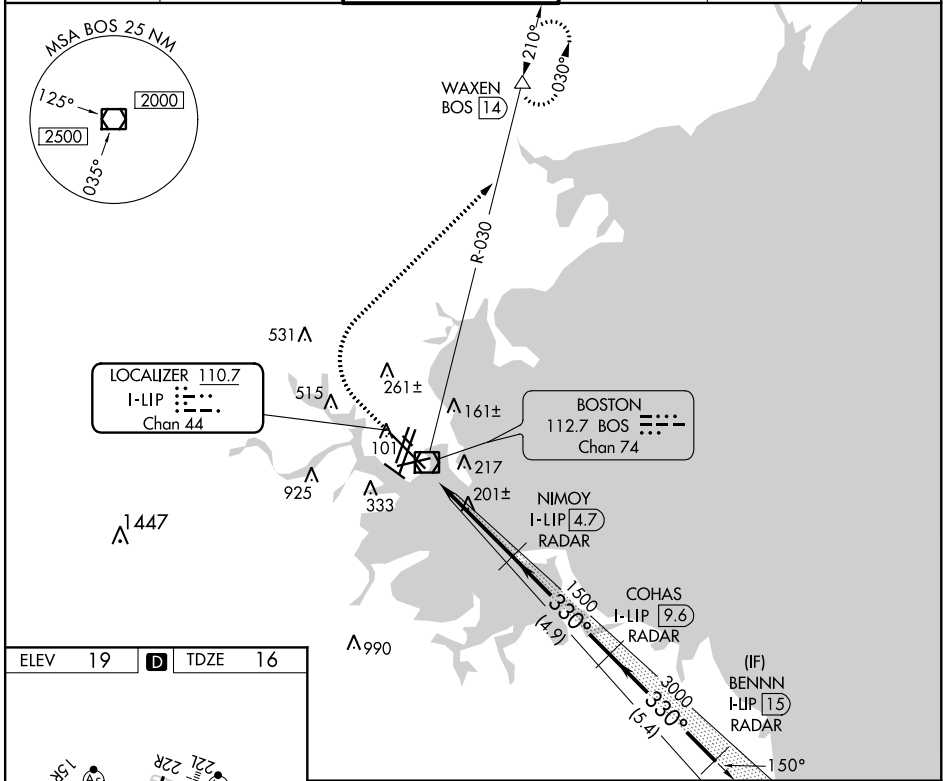
LOC/DME I-LIP 110.7 Chan 44	APP CRS 330°	Rwy Idg 10083 TDZE 16 Apt Elev 19
---	------------------------	--

ILS RWY 33L (SA CAT I)

GENERAL EDWARD LAWRENCE LOGAN INTL (BOS)

RADAR required for procedure entry, DME.		ALSF-2	MISSED APPROACH: Climb to 1500 then climbing right turn to 3000 on BOS VOR/DME R-030 to WAXEN/BOS 14 DME and hold.	
Requires specific OPSPEC, MSPEC, or LOA approval.				

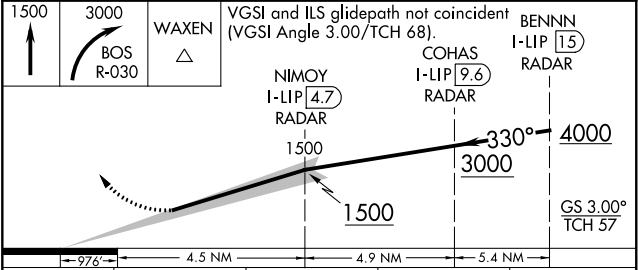
D-ATIS 135.0	BOSTON APP CON 120.6 263.1	BOSTON TOWER 128.8 257.8 (WEST) 132.225 257.8 (EAST)	GND CON 121.9 121.75	CLNC DEL 121.65 257.8	CPDLC
------------------------	--------------------------------------	--	--------------------------------	---------------------------------	-------



ELEV 19	D	TDZE 16
---------	----------	---------

Inset chart showing other runways and taxiways:

- 15R, 15L, 22R, 22L, 33R, 33L, 4R, 4L, 5R, 5L.
- Distances: 2557 X 100, 10083, 7864 X 150, 7001 X 150, 5000 X 100.



CATEGORY	A	B	C	D
S-ILS 33L	RA 166/14 150 DA 166			

SA CATEGORY I - SPECIAL AIRCREW & AIRCRAFT CERTIFICATION REQUIRED

TDZ/CL Rwy 4R, 15R and 33L
REIL Rwy 4L, 27 and 32
MIRL Rwy 15L-33R
HIRL Rwy 4L-22R, 4R-22L, 9-27, 14-32 and 15R-33L

NE-1, 15 JUL 2021 to 12 AUG 2021

NE-1, 15 JUL 2021 to 12 AUG 2021