

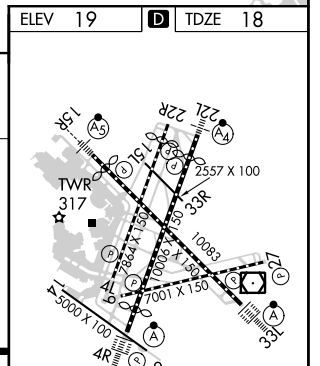
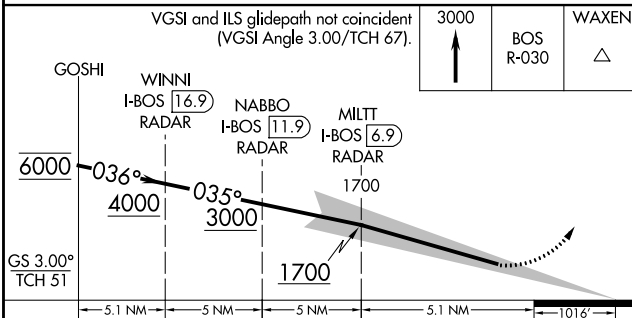
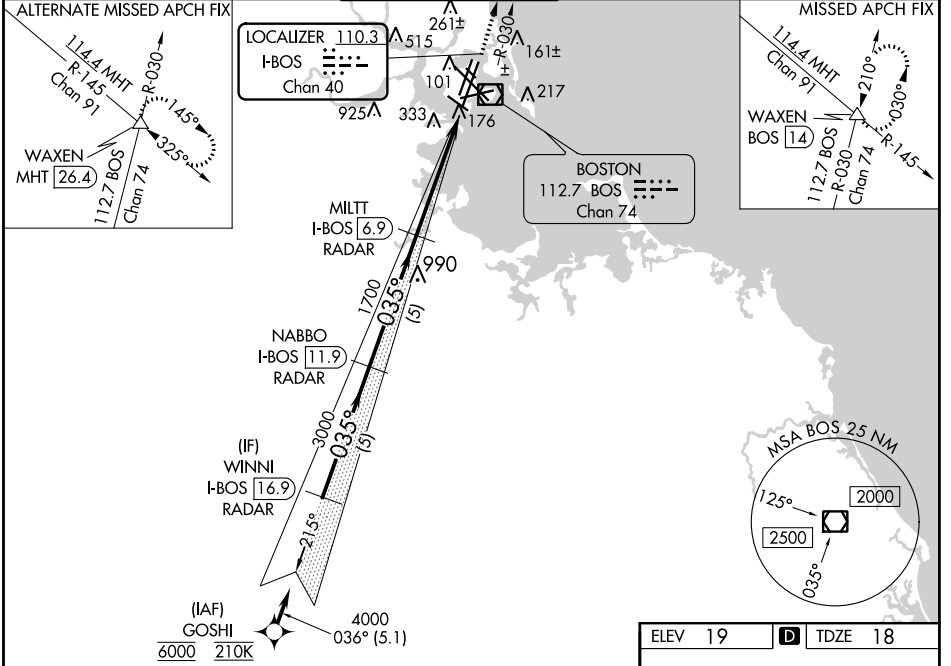
LOC/DME I-BOS <b>110.3</b> Chan 40	APP CRS <b>035°</b>	Rwy Idg <b>8851</b> TDZE <b>18</b> Apt Elev <b>19</b>
--	------------------------	---

# ILS RWY 4R (CAT II & III)

GENERAL EDWARD LAWRENCE LOGAN INTL (BOS)

RNAV 1-GPS or RADAR required for procedure entry. DME or RADAR required.		ALSF-2 	MISSED APPROACH: Climb to 3000 on BOS VOR/DME R-030 to WAXEN INT/BOS 14 DME and hold.
 When control tower reports tall vessels in approach area, procedure NA. RVR 1000 authorized with specific OPSEC, MSPEC or LOA approval and use of Autoland or HUD to touchdown.			

D-ATIS <b>135.0</b>	BOSTON APP CON <b>120.6 263.1</b>	BOSTON TOWER <b>128.8 257.8 (WEST)</b> <b>132.225 257.8 (EAST)</b>	GND CON <b>121.9 121.75</b>	CLNC DEL <b>121.65 257.8</b>	CPDLC
------------------------	--------------------------------------	--	--------------------------------	---------------------------------	-------



CATEGORY	A	B	C	D
S-ILS 4R	CAT II RA 99/12		100 DA 118	
S-ILS 4R	CAT III RVR 06			

**CATEGORY II & III ILS - SPECIAL AIRCREW & AIRCRAFT CERTIFICATION REQUIRED**

TDZ/CL Rwy's 4R, 15R and 33L  
 REIL Rwy's 4L, 27 and 32  
 MIRL Rwy 15L-33R  
 HIRL Rwy's 4L-22R, 4R-22L, 9-27, 14-32 and 15R-33L

NE-1, 15 JUL 2021 to 12 AUG 2021

NE-1, 15 JUL 2021 to 12 AUG 2021