

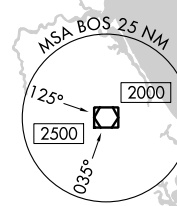
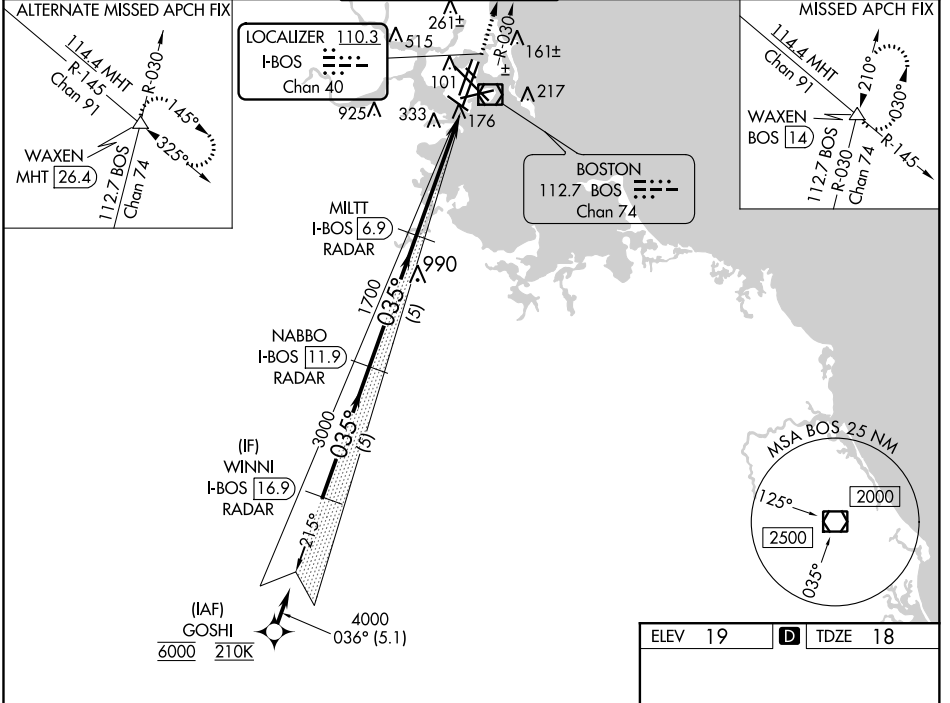
LOC/DME I-BOS 110.3 Chan 40	APP CRS 035°	Rwy Idg 8851 TDZE 18 Apt Elev 19
---	------------------------	---

ILS RWY 4R (SA CAT I)

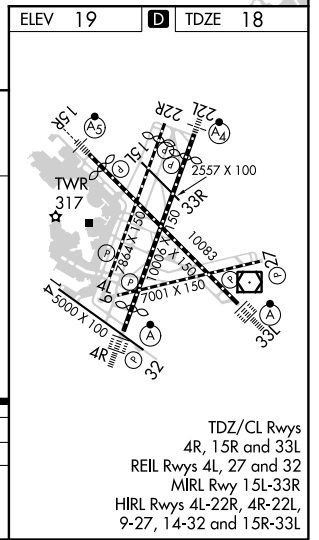
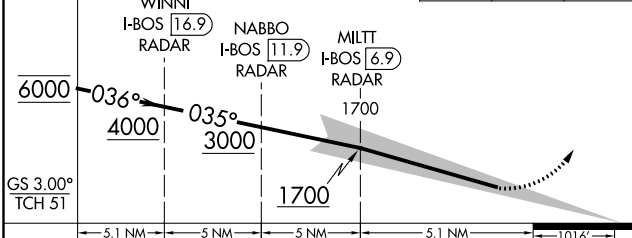
GENERAL EDWARD LAWRENCE LOGAN INTL (BOS)

RNAV 1-GPS or RADAR required for procedure entry. DME or RADAR required.		ALSF-2 	MISSED APPROACH: Climb to 3000 on BOS VOR/DME R-030 to WAXEN INT/BOS 14 DME and hold.	
<p>▼ When control tower reports tall vessels in approach area, procedure NA. ▲ Requires specific OPSPEC, MSPEC, or LOA approval and use of HUD to DH. Circling NA for Cat C/D west of Rwy 4L and 15R. Circling NA to Rwy 14.</p>				

D-ATIS 135.0	BOSTON APP CON 120.6 263.1	BOSTON TOWER 128.8 257.8 (WEST) 132.225 257.8 (EAST)	GND CON 121.9 121.75	CLNC DEL 121.65 257.8	CPDLC
------------------------	--------------------------------------	--	--------------------------------	---------------------------------	-------



VGSi and ILS glidepath not coincident (VGSi Angle 3.00/TCH 67).	3000	BOS R-030	WAXEN
---	------	-----------	-------



CATEGORY	A	B	C	D
S-ILS 4R	RA 168/14		150 DA 168	
SA CATEGORY I ILS - SPECIAL AIRCREW & AIRCRAFT CERTIFICATION REQUIRED				

NE-1, 15 JUL 2021 to 12 AUG 2021

NE-1, 15 JUL 2021 to 12 AUG 2021