

LOC/DME I-DGU <b>111.3</b> Chan <b>50</b>	APP CRS <b>272°</b>	Rwy ldg <b>7001</b> TDZE <b>17</b> Apt Elev <b>19</b>
---	------------------------	---

# ILS or LOC RWY 27

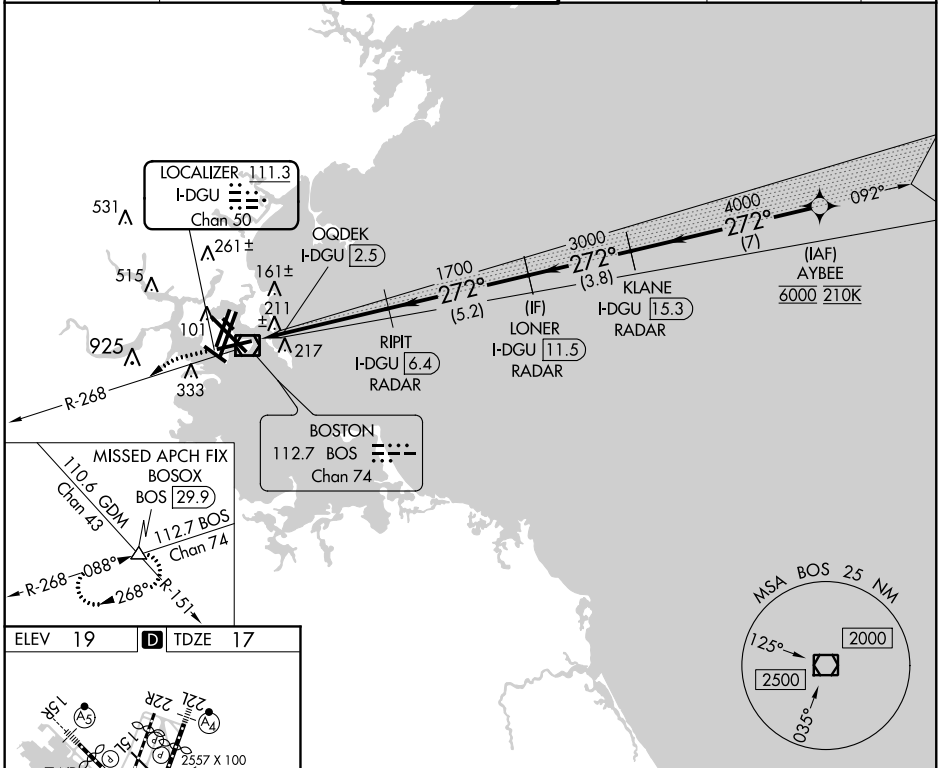
GENERAL EDWARD LAWRENCE LOGAN INTL (BOS)

DME or RADAR required. RADAR required for procedure entry.  
From AYBEE: RNAV 1-GPS required.

MISSED APPROACH: Climb to 3000  
on BOS VOR/DME R-268 to  
BOSOX INT/BOS 29.9 DME and hold.

- Circling NA to Rwy 14.
- Circling NA for Cats C and D west of Rwy 4L and 15R.

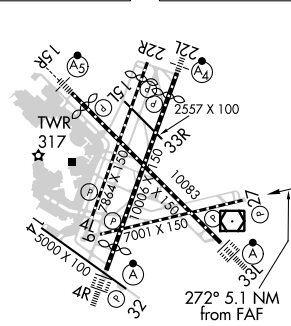
D-ATIS <b>135.0</b>	BOSTON APP CON <b>120.6 263.1</b>	BOSTON TOWER <b>128.8 257.8 (WEST)</b> <b>132.225 257.8 (EAST)</b>	GND CON <b>121.9 121.75</b>	CLNC DEL <b>121.65 257.8</b>	CPDLC
------------------------	--------------------------------------	--	--------------------------------	---------------------------------	-------



NE-1, 15 JUL 2021 to 12 AUG 2021

NE-1, 15 JUL 2021 to 12 AUG 2021

ELEV <b>19</b>	<b>D</b>	TDZE <b>17</b>
----------------	----------	----------------



TDZ/CL Rwy 4R, 15R and 33L  
REIL Rwy 4L, 27 and 32  
MIRL Rwy 15L-33R  
HIRL Rwy 4L-22R, 4R-22L,  
9-27, 14-32 and 15R-33L

FAF to MAP 3.9 NM

Knots	60	90	120	150	180
Min:Sec	3:48	2:32	1:54	1:31	1:16

BOSOX RIPIT I-DGU 6.4 LONER I-DGU 11.5 KLANE I-DGU 15.3 QOQDEK I-DGU 2.5	VGSi and ILS glidepath not coincident (VGSi Angle 3.00/TCH 71).			
	BOS R-268	LONER I-DGU 11.5	KLANE I-DGU 15.3	AYBEE
3000	1700	4000	6000	
1.2	3.9 NM	5.2 NM	3.8 NM	7 NM
CATEGORY	A	B	C	D
S-ILS 27		460-1½	443 (500-1½)	
S-LOC 27		460-1½	443 (500-1½)	
CIRCLING	940-1½ 921 (1000-1½)	1040-1½ 1021 (1100-1½)	620-1¾ 601 (700-1¾)	620-2 601 (700-2)